

# CUSTOMER FOCUS ON LOSS CONTROL

NUMBER 81

## Floor Opening Covers

Unprotected floor openings take far too many lives. Construction workers have been seriously injured or killed when they have picked up a piece of plywood that is covering a floor opening to use it somewhere. Not realizing what was happening, they pick up the end or side of the sheet to get under it to lift it, and then go right through the hole. This scene plays out constantly and for no reason. Here are some guidelines to prevent this needless loss of life.

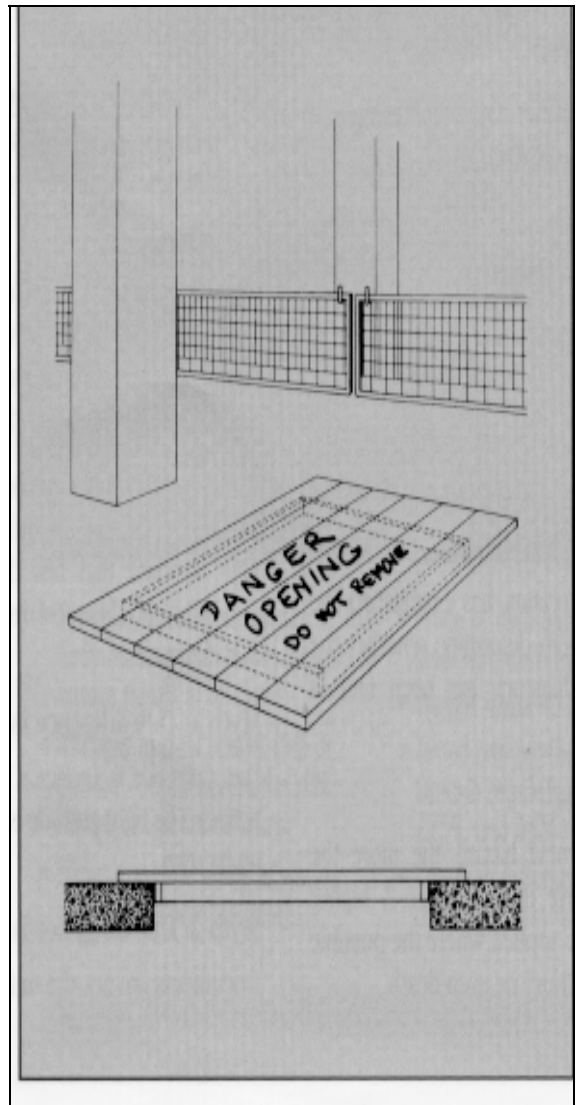
- Use guardrails as the preferred method of protecting floor and roof openings.
- If guardrails are impractical, secure covers and mark them clearly.
- Use planks, plywood, or steel plate for covers.
- Use cleats on the underside of the cover that fit inside the hole; this will prevent sliding.
- Fasten the cover securely so that it cannot be easily removed.
- Ensure that covers are strong enough to support any anticipated load.
- Paint covers a bright color.
- Include a conspicuous warning, such as:

**Danger!**

**Floor Opening!**

**Do Not Remove**

Falls in construction claim far too many good construction workers, for no reason. Keep all floor opening covers in place and secured.



*This document is provided for information purposes only. It is not intended to be a substitute for individual legal counsel or advice on issues discussed within. Readers seeking resolution of specific legal issues or business concerns related to the captioned topic should consult their attorney and/or insurance representative.*

Copyright © 1999 The Hartford Loss Control Department. All rights reserved.

