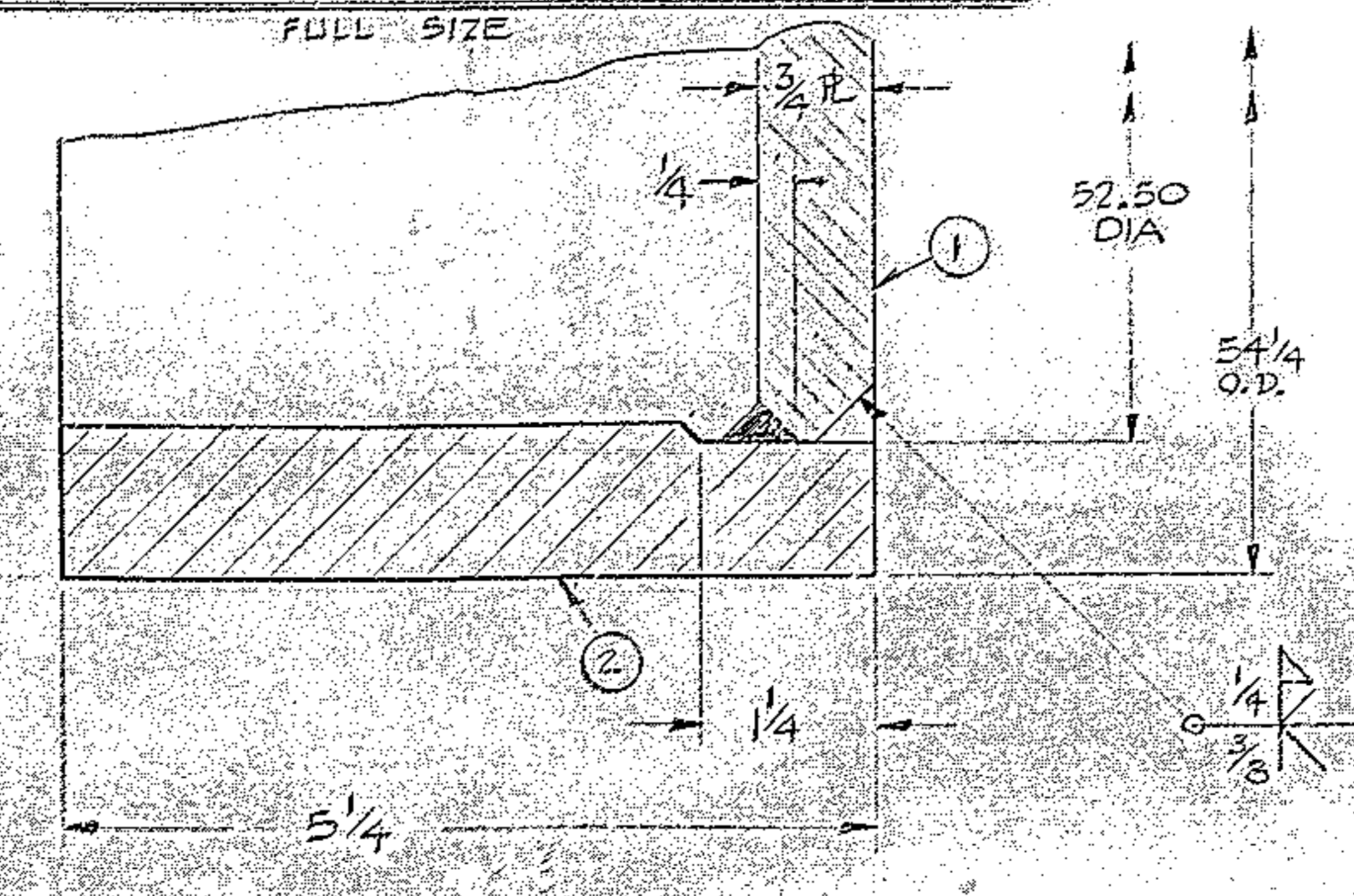
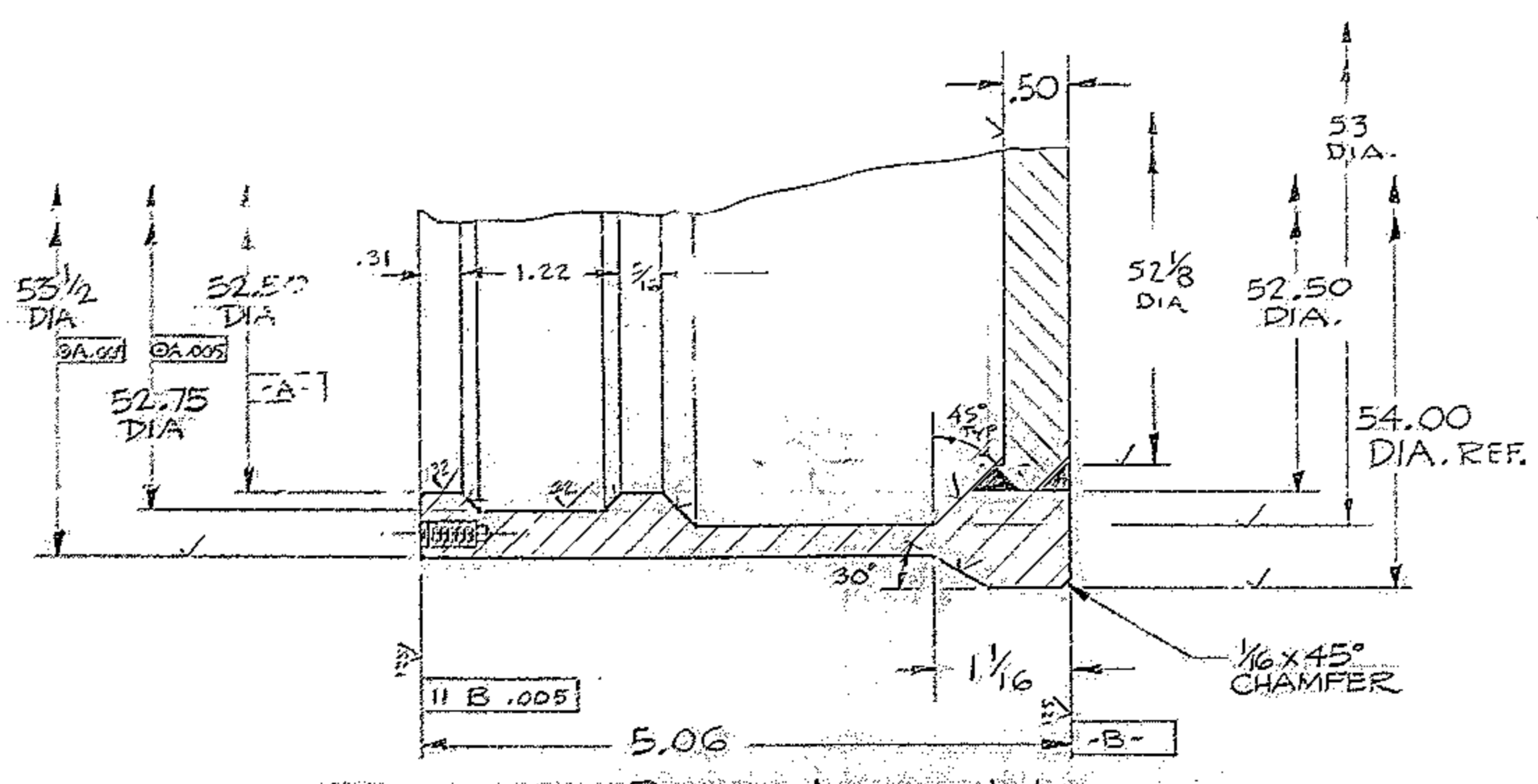
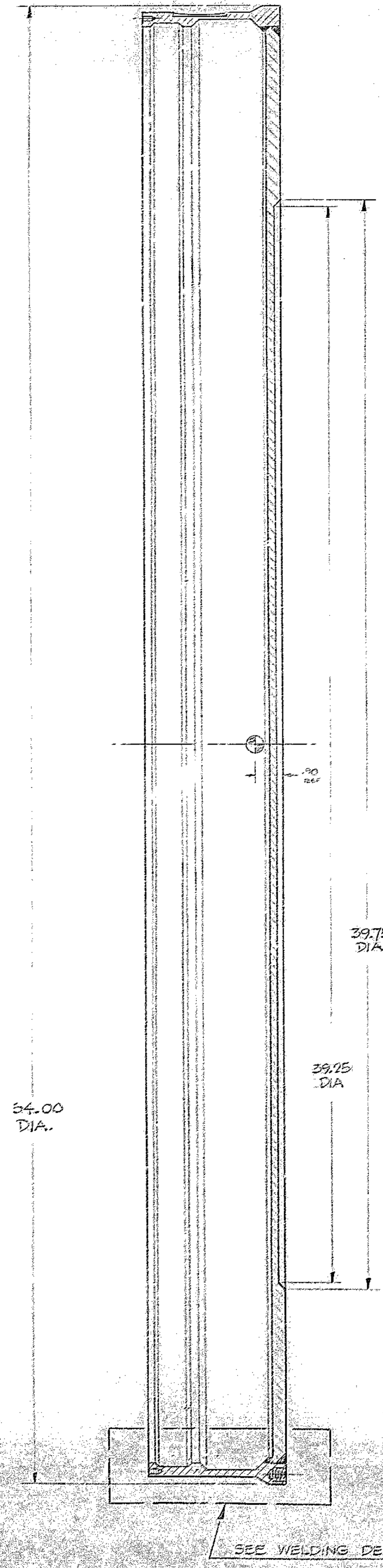


THIS DOCUMENT CONTAINS INFORMATION PROPRIETARY TO WESTERN GEAR CORPORATION. ALL DESIGN, MANUFACTURING, REPRODUCTION, USE, PATENT, AND SALES RIGHTS REGARDING THE SAME ARE EXPRESSLY RESERVED BY WESTERN GEAR CORPORATION. THIS DOCUMENT IS SUBMITTED FOR REFERENCE PURPOSES ONLY AND SHALL NOT BE DISCLOSED TO ANY UNAUTHORIZED PERSON OR INCORPORATED INTO ANY OTHER PROJECT.

REVISIONS			
ZONE	LTR	DESCRIPTION	DATE
A		REVISED PER AREA REQ	3-11-70



SEE WELDING DETAILS

FIND NO.	PARTY NO.	DESCRIPTION	QTY	MATERIAL	CODE IDENT
LIST OF MATERIAL (LM)					
LIMITS ON MACHINED DIMENSIONS EXCEPT AS NOTED		150" STELLAR TELESCOPE		WESTERN GEAR CORPORATION	
ANGULAR = ± 10'		DRAWN ZS/V, Y.		HEAVY MACHINERY DIVISION EVERETT, WASHINGTON	
LINEAR = ± .005		CHECKED W.F.		MIRROR CELL	
X = ± .01		ENGR. C.Z.		5/8 MIRROR CELL & SUPPORT ASSEMBLY	
XX = ± .02		DATE 3-27-69		SIZE CODE IDENT NO.	
XXX = ± .005		3-15-70		E 16603 2150.580E008	
XXXI = ± .002		3-15-70		REV	
XXXII = ± .001		3-15-70		A	
MATERIAL: N/A-2150.580E002					
SCALE 1/4" = FULL WT 32G LB SHEET 2 OF 2					