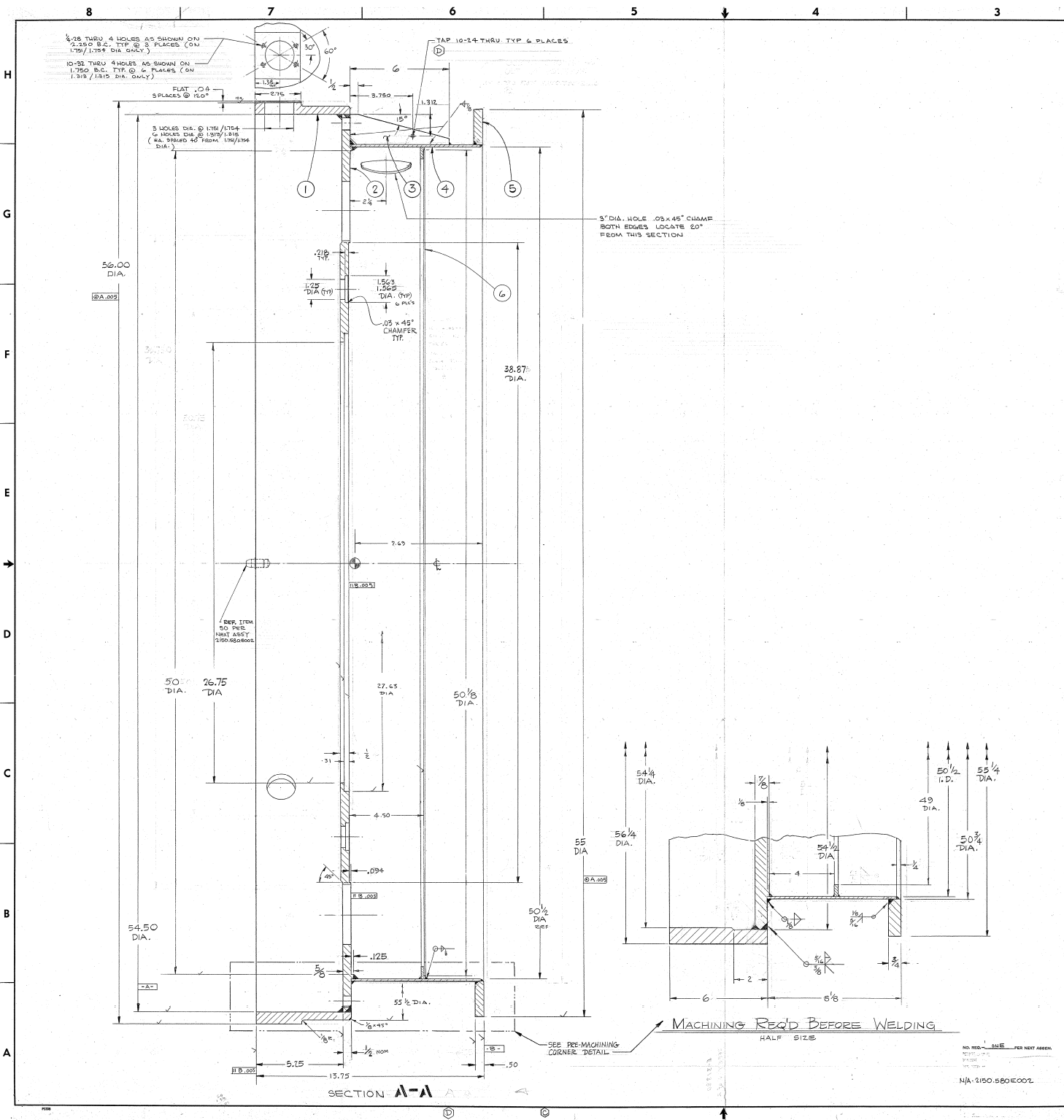


REVISIONS			
ZONE	LTR	DESCRIPTION	DATE APPROVED
A		REVISED PER D.S.A. DRG. NO.	11-14-01
B		CONSIDERED PER D.S.A. DRG. NO.	11-14-01
C		ADDED 4.750 HOLES = REF ECR 3420	11-14-01
D		ADDED 10-2.250 HOLES = REF ECR 3504	11-14-01



- NOTES**
1. PREMACHINE MATERIALS FOR WELDING FIT-UP
 2. STRESS RELIEVE 1/2 HOURS AFTER WELDING
 3. ∇ MACHINES WHERE INDICATED & IS NOTED
 4. PAINTERIES & MASK ALL MATING SURFACES BEFORE 4000 BLACK WASH

FIND NO.	PART NO.	DESCRIPTION	QTY	MATERIAL	CODE IDENT
6		PL 1/2 x 30 1/2 DIA.		STEEL C1020 HR.	
5		PL 3/4 x 55 1/4 DIA	1	STEEL S 1010	
4		PL 11/16 x 8 x 13-6"	1	STEEL S 1010	ROLL & WELD
3		PL 1/4 x 2' x 2"	6	STEEL S 1010	
2		PL 1/8 x 54 1/2 DIA.	1	STEEL S 1010	
1		PL 1 x 6 1/4 x 15-0"	1	STEEL S 1010	ROLL & WELD

LIMITS ON MACHINED DIMENSIONS UNLESS AS NOTED		150° STELLAR TELESCOPE		WESTERN BEAR CORPORATION		HEAVY MACHINERY DIVISION	
ANGULAR	± 1° P	LINEAR	± 0.005	DATE	3/31/09	DRW	2150.580E.003
± 0.01	± 0.005	± 0.005	± 0.005	CHKD	2/15/09	ENGR	2/22/09
BREAK ALL SHARP EDGES				MIRROR CELL & SUPPORT ASSY			
MATERIAL				SIZE / CODE IDENT NO.			
Name is				E 16603 2150.580E.003 D			
APPROVED				SCALE 1/2" = 1" 1/8"			
NO. REQ'D				DATE PER NEXT ASSEMBLY			
N/A				2150.580E.003			