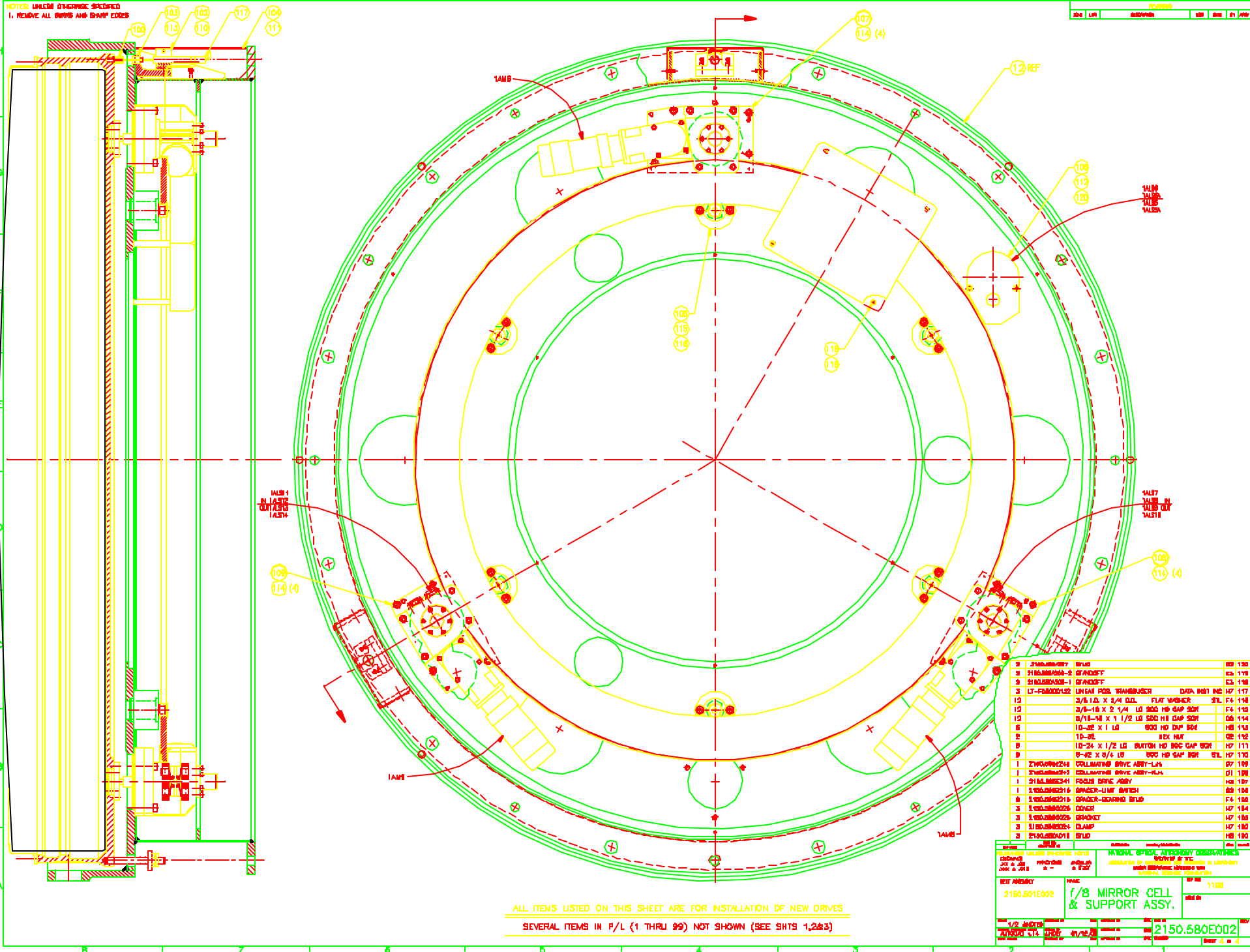


NOTES UNLESS OTHERWISE SPECIFIED
1. REMOVE ALL BURRS AND SHARP EDGES



3	2140000007	BRID	02	130
3	2140000008	GRANDOFF	03	136
3	2140000009	GRANDOFF	03	138
3	LT-F8000Y102	LINEAR POS. TRANSDUCER	DATA	101 INE 117
10		3/8" I.D. X 3/4" O.D.	FLAT WASHER	STL F4 118
10		3/8"-18 X 2 1/4"	LG SDC HO GAP BRK	F4 119
10		3/8"-18 X 1 1/2"	LG SDC HO GAP BRK	08 114
6		10-32 X 1 LG	SDC HO DNF BRK	H8 113
2		10-32	SDC NUT	02 112
8		10-24 X 1 1/2 LG	BUTTON HO SDC GAP BRK	H7 111
8		9-32 X 3/4 LG	SDC HO GAP BRK	H7 110
1	2140000244	COLLIMATING BRVE ASBY-LIN		07 109
1	2140000243	COLLIMATING BRVE ASBY-RLN		01 108
1	2140000241	FOCUS BRVE ASBY		04 107
1	2140000216	GRACKER-LINE BRVEN		03 104
8	2140000218	GRACKER-BOARDING BRID		F4 104
3	2140000228	COVER		H7 184
3	2140000229	BRACKET		H7 183
3	2140000234	CLAMP		H7 180
3	2140000011	BRID		H8 180

ALL ITEMS LISTED ON THIS SHEET ARE FOR INSTALLATION OF NEW DRIVES
SEVERAL ITEMS IN P/L (1 THRU 99) NOT SHOWN (SEE SHTS 1,2&3)

DATE	11/82	REV	11/82
DESIGNED BY	2150.501E002	INTEGRAL SERVICE ASSEMBLY DATA CENTER	2150.580E002
APP'D BY		FOR	
CHK'D BY		DATE	
REV		BY	
1/2 INCH		2150.580E002	
ANYONE CAN COPY			