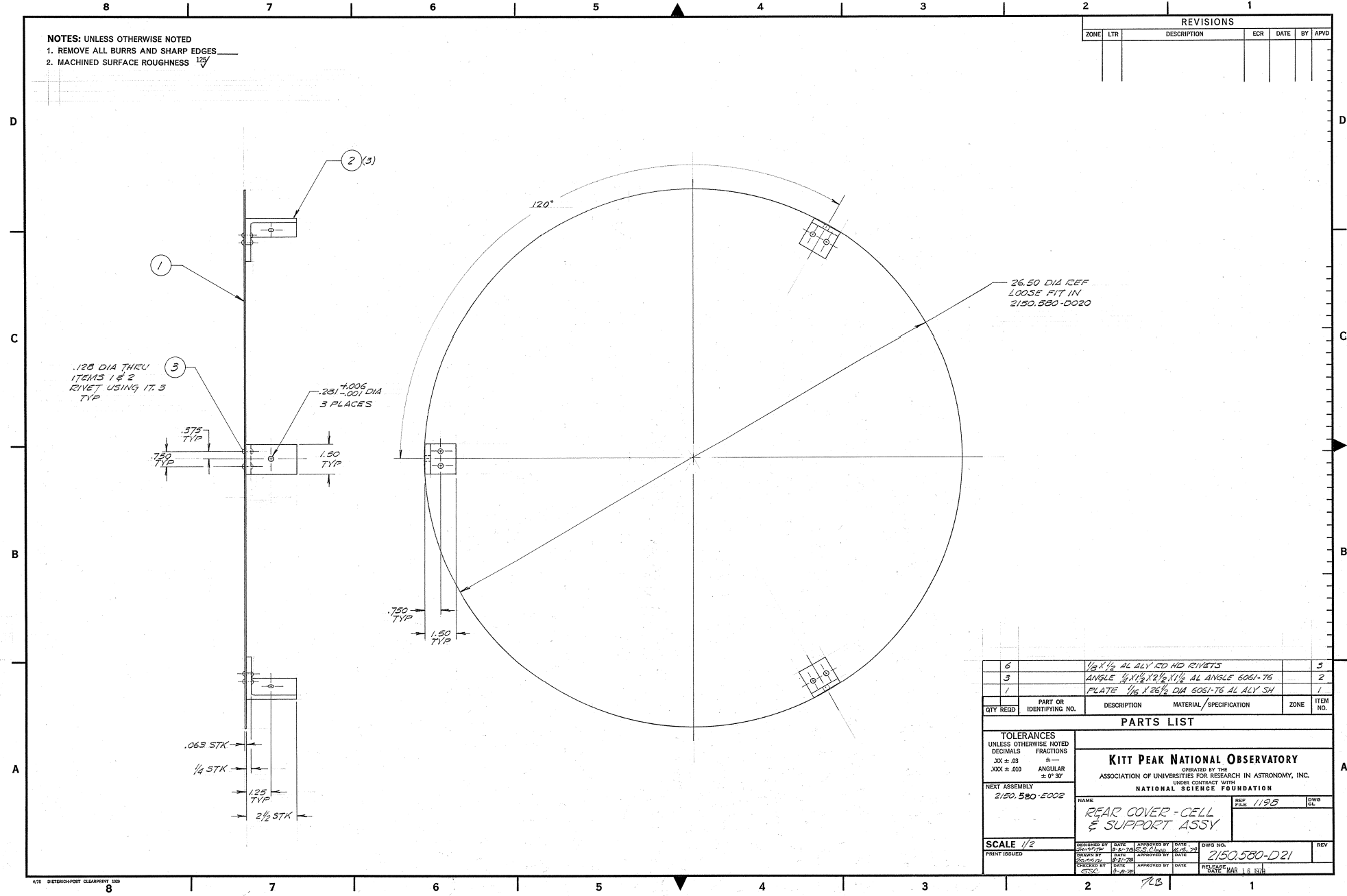


NOTES: UNLESS OTHERWISE NOTED
 1. REMOVE ALL BURRS AND SHARP EDGES
 2. MACHINED SURFACE ROUGHNESS $125 \sqrt{R}$

REVISIONS					
ZONE	LTR	DESCRIPTION	ECR	DATE	BY APVD



QTY	REGRD	PART OR IDENTIFYING NO.	DESCRIPTION	MATERIAL/SPECIFICATION	ZONE	ITEM NO.
6			$1/8 \times 1/2$ AL ALY CD HD RIVETS			3
3			ANGLE $1/4 \times 1/2 \times 2 \times 1/2$ AL ANGLE 6061-T6			2
1			PLATE $1/8 \times 26 \times 1/2$ DIA 6061-T6 AL ALY SH			1

TOLERANCES UNLESS OTHERWISE NOTED			
DECIMALS	FRACTIONS	ANGULAR	
XX ± .03	±	± 1° 30'	
XXX ± .010			

PARTS LIST			
KITT PEAK NATIONAL OBSERVATORY			
OPERATED BY THE ASSOCIATION OF UNIVERSITIES FOR RESEARCH IN ASTRONOMY, INC.			
UNDER CONTRACT WITH NATIONAL SCIENCE FOUNDATION			
NEXT ASSEMBLY 2150.580-2002	NAME REAR COVER - CELL & SUPPORT ASSY	REV FILE 1193	DWG CL.
SCALE 1/2	DESIGNED BY DATE S.S.C. 10-21-78	APPROVED BY DATE S.S.C. 10-21-78	DWG NO. 2150.580-D21
PRINT ISSUED	DESIGNED BY DATE S.S.C. 10-21-78	APPROVED BY DATE S.S.C. 10-21-78	RELEASE DATE MAR 16 1979