

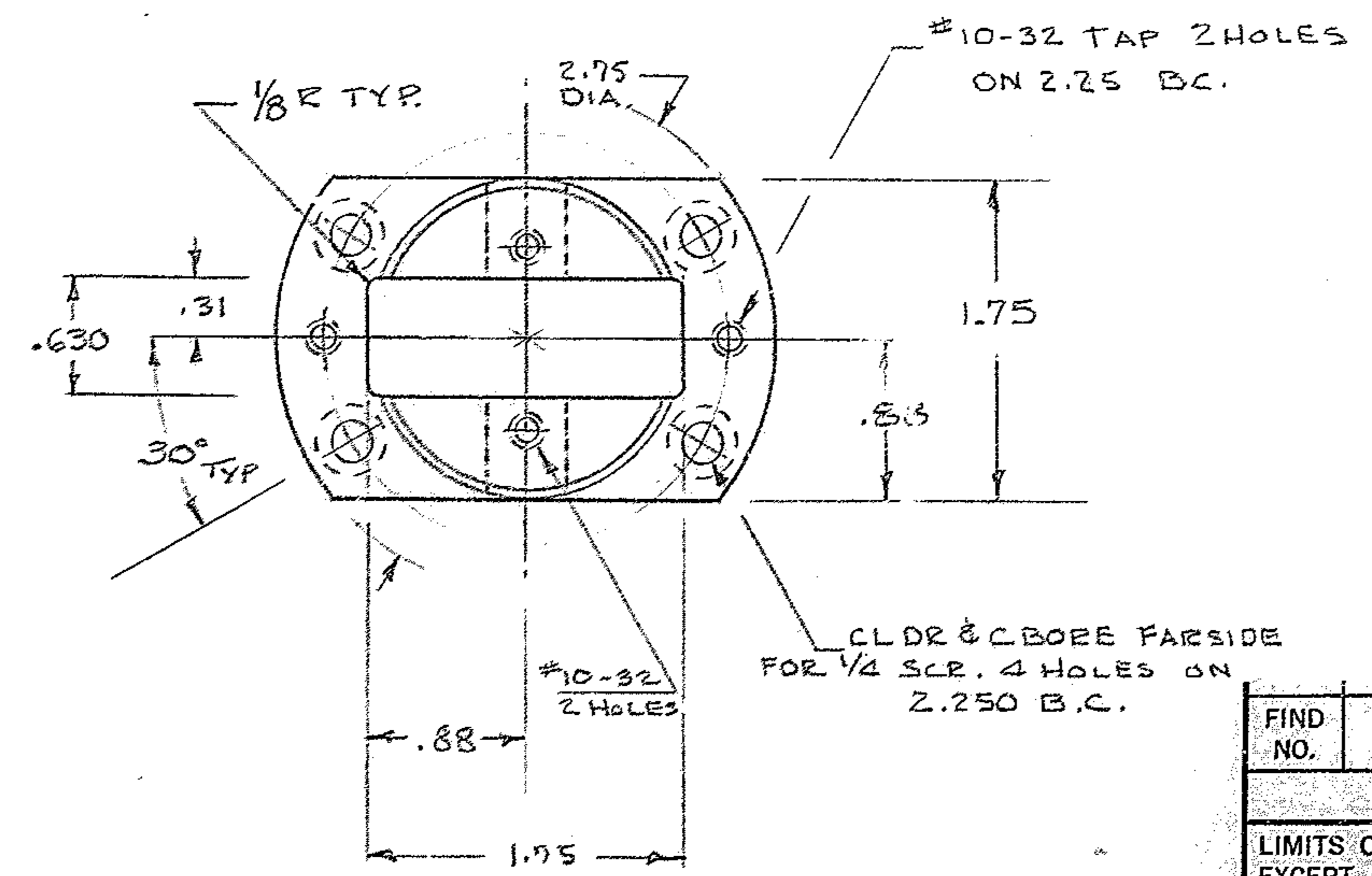
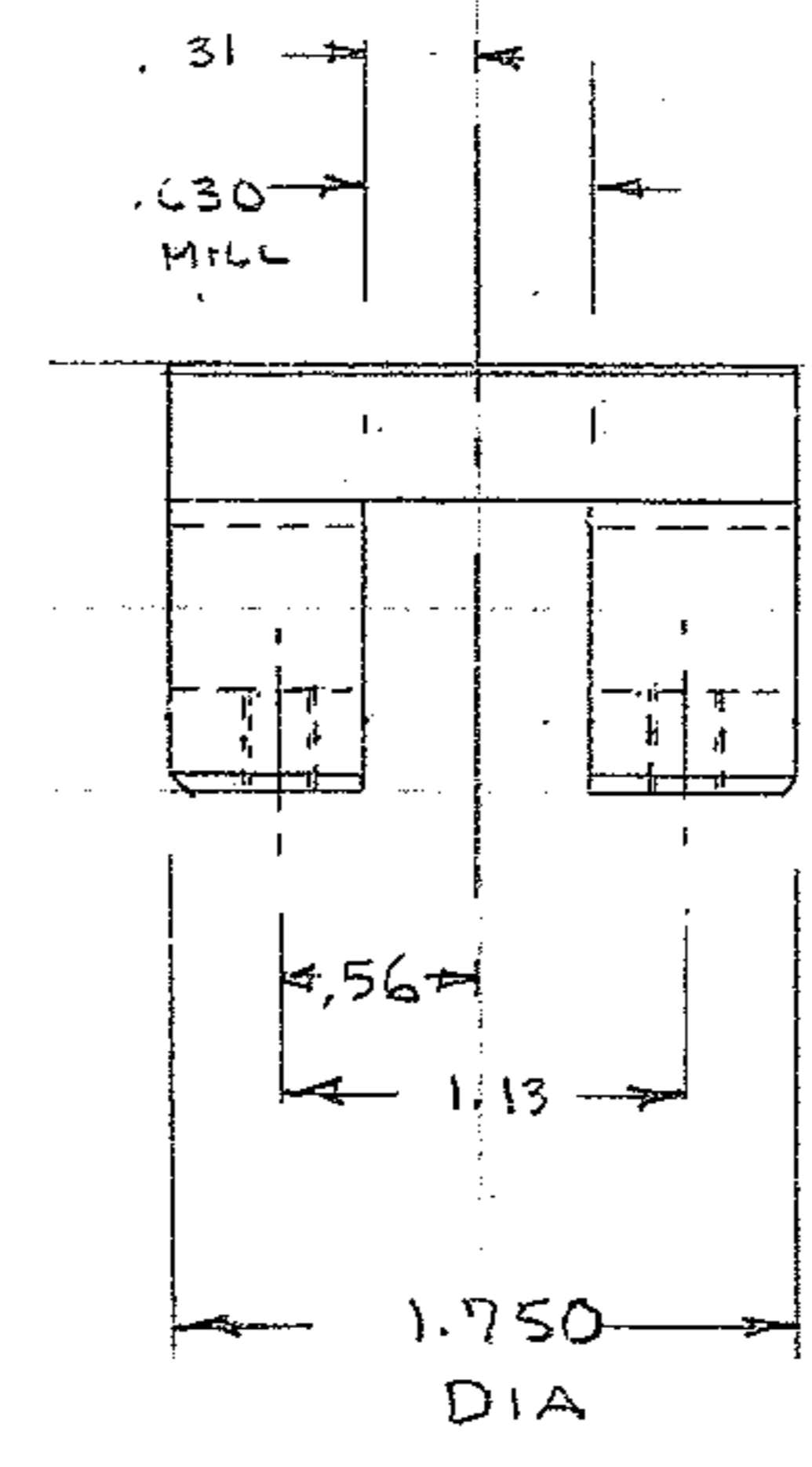
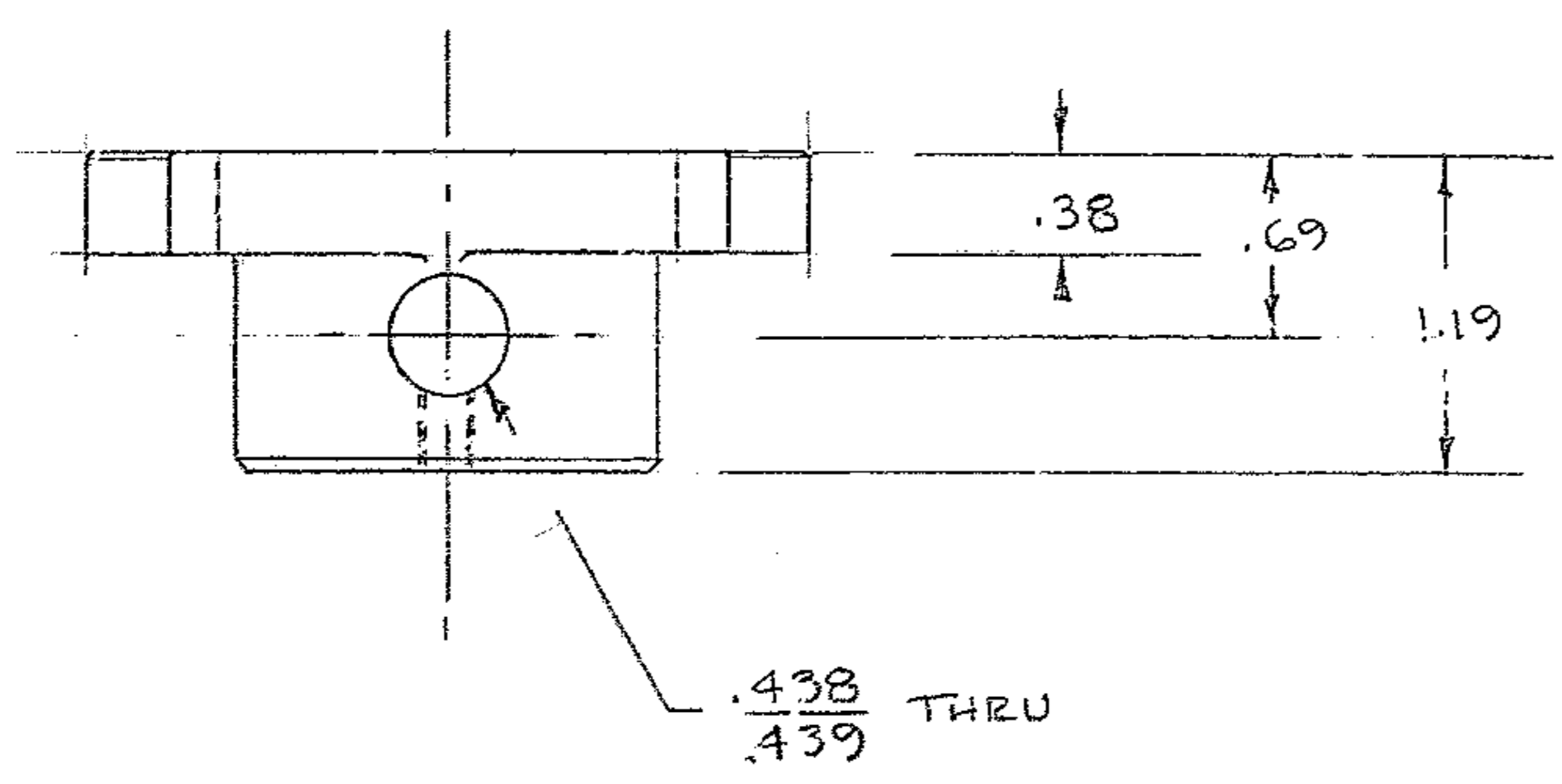
4

3

2

1

REVISIONS				
ZONE	LTR	DESCRIPTION	DATE	APPROVED
	A	REVISED PER AURA REQ.	3-13-70	WR



CLDR & CBORE FAR SIDE FOR 1/2 SCR. 4 HOLES ON 2.250 B.C.

REF. FILE 1198

FIND NO.	PART NO.	DESCRIPTION	QTY	MATERIAL	CODE IDENT
LIST OF MATERIAL (LM)					
LIMITS ON MACHINED DIMENSIONS EXCEPT AS NOTED		150" STELLAR TELESCOPE		Western GEAR CORPORATION	
ANGULAR = ± 1/2°		DRAWN WR		HEAVY MACHINERY DIVISION EVERETT, WASHINGTON	
LINEAR: .X = ± .1 .XXX = ± .001 .003		CHECK WR		CELL EDGE ROLLER MOUNT	
.XX = ± .03 .01 FRACTIONAL = ± 1/32		ENGR R		X/8 MIRROR CELL & SUPPORT ASS'Y	
BREAK ALL SHARP EDGES .03x45		APPROVED		SIZE	CODE IDENT NO.
MATERIAL NOTED				C 16603	2150.580C011
				SCALE FULL	WT .22 LB SHEET OF

NO. REQ. = 3 PER NEXT ASSEMBLY
MATERIAL = 2024 T3 ALUM
FINISH = 3 A.O. BLK ANODIZE
HT. TRT. =
N/A-2150.580E002