

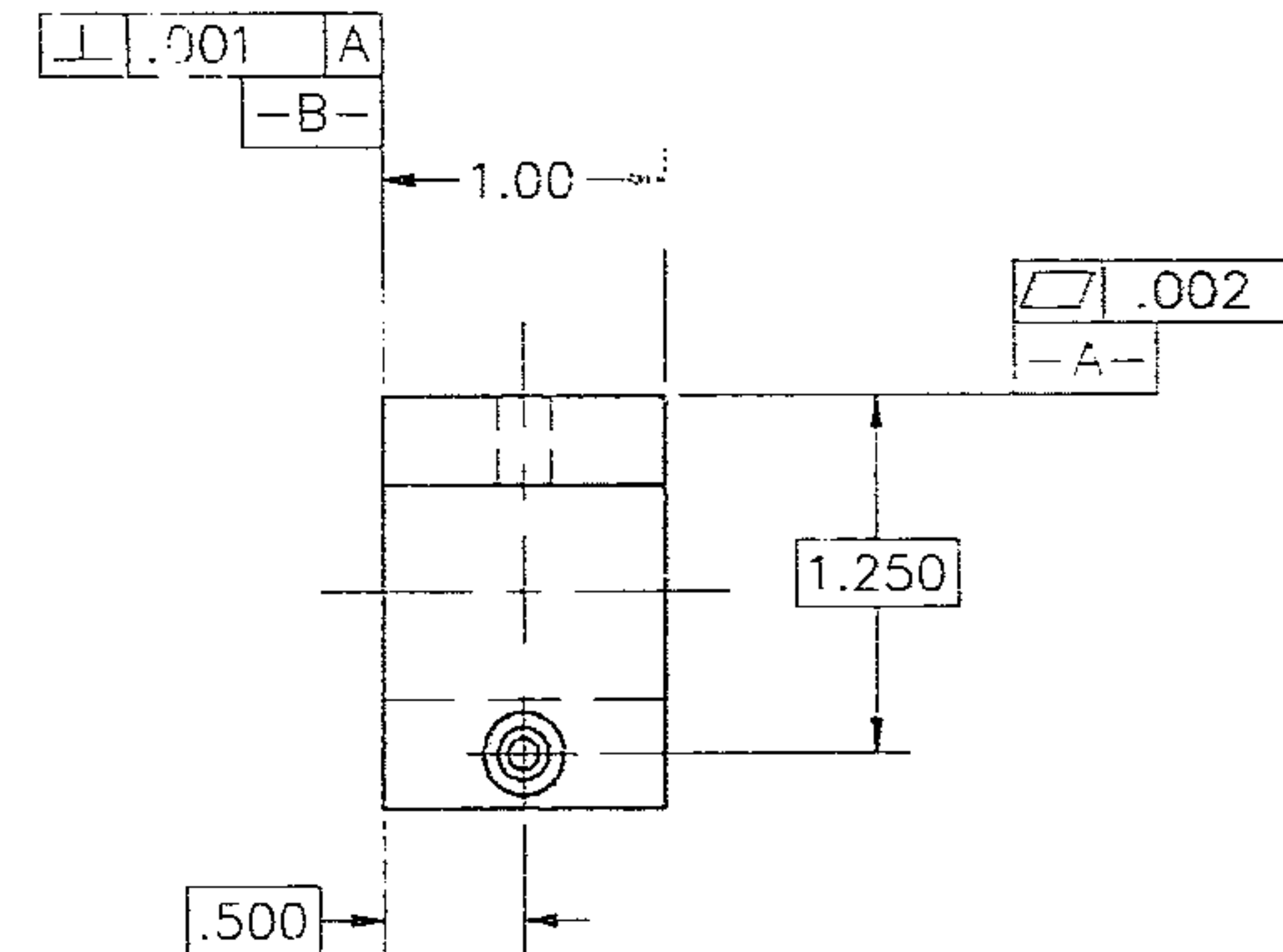
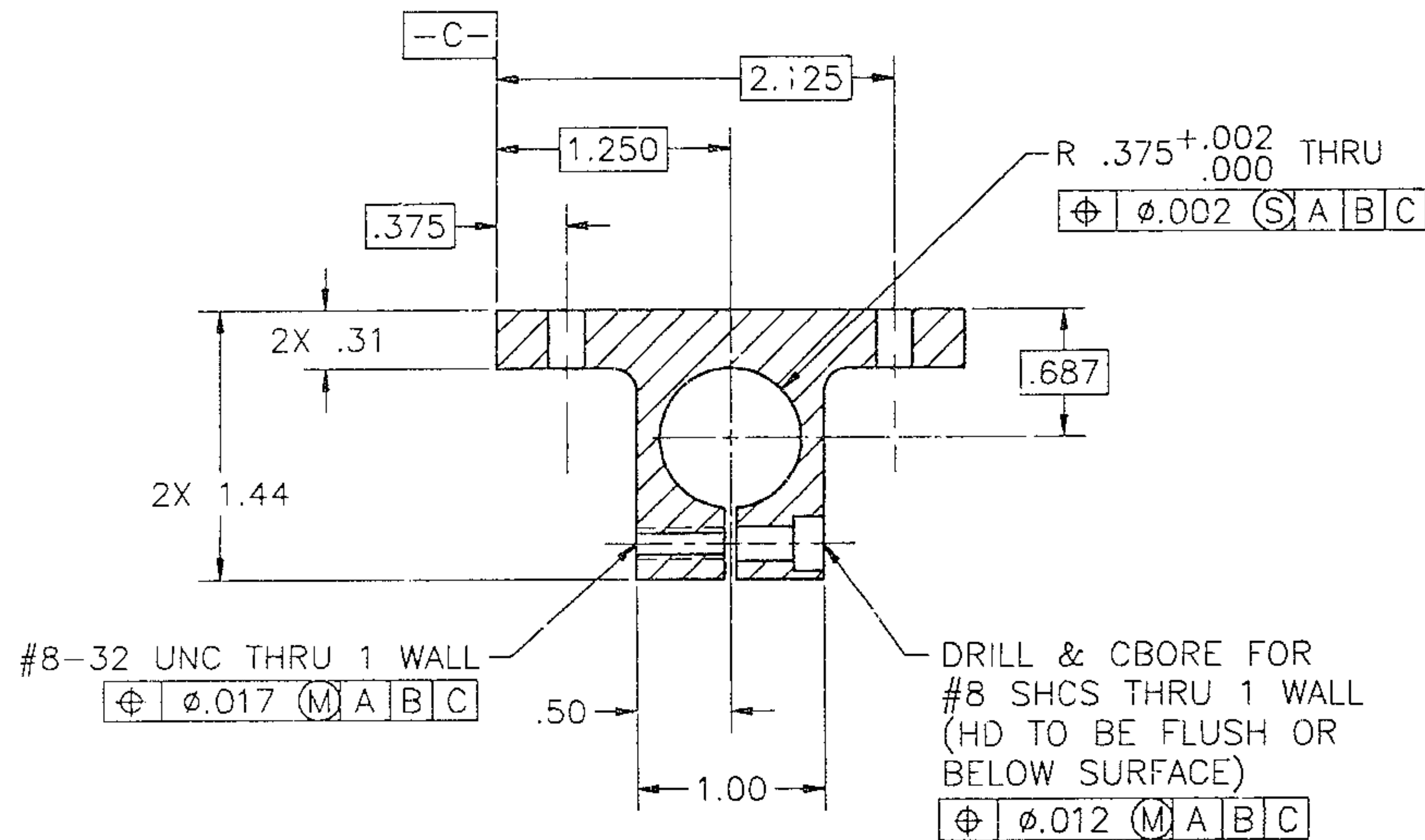
NOTES: UNLESS OTHERWISE SPECIFIED

1. REMOVE ALL BURRS AND SHARP EDGES .01.
2. MACHINED SURFACE ROUGHNESS 63 ✓
3. MATERIAL: 300 SERIES ST STL BAR.  
ADD STOCK FOR MACHINING AS REQUIRED.

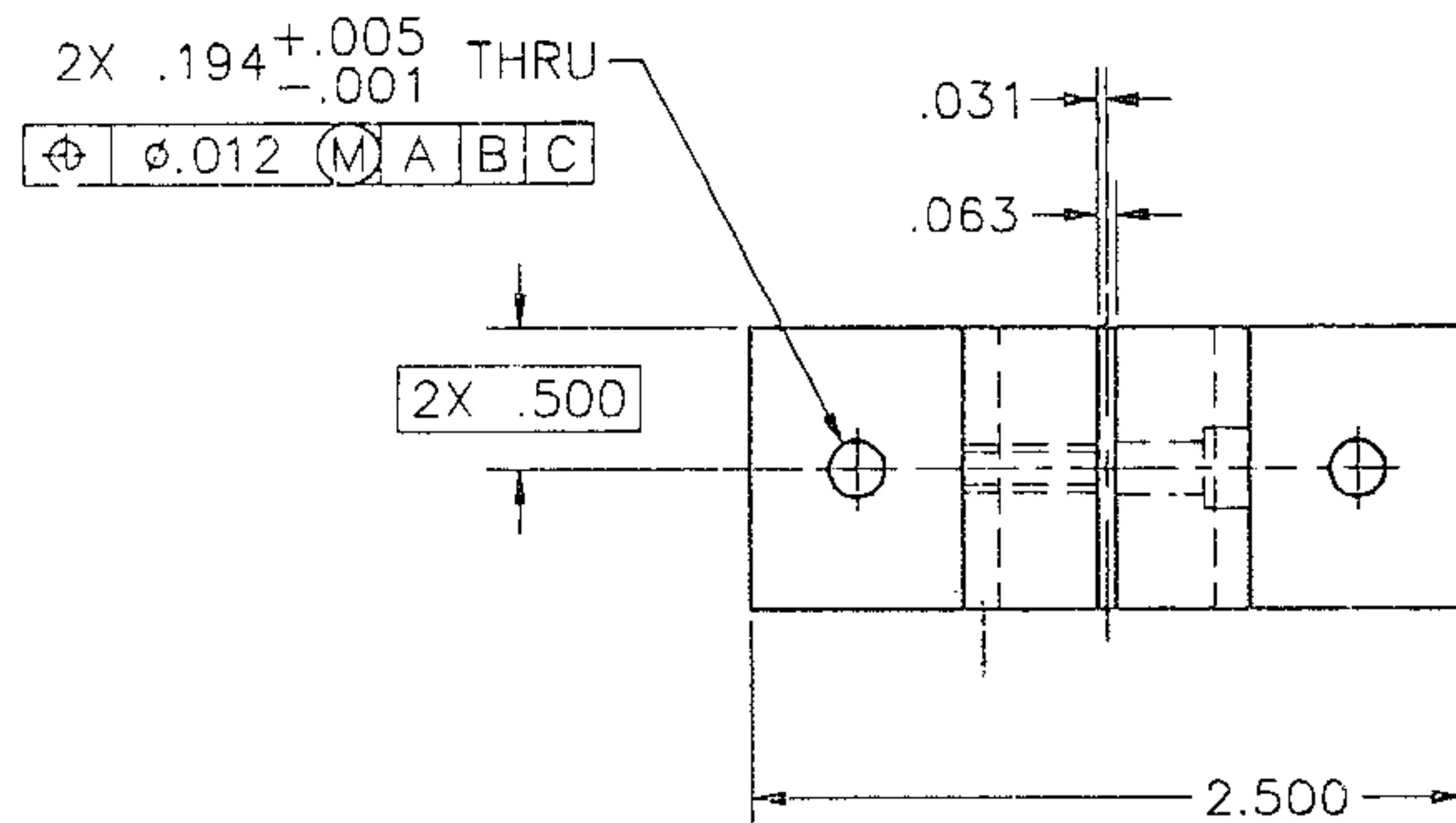
4. FINISH: BLACK OXIDE.

5. THIS DRAWING DIMENSIONED PER ANSI Y 14.5M-1982.  
ALL DIMENSIONS APPLY AFTER FINISHING.

REVISIONS				
LTR	DESCRIPTION	ECR	DATE	BY



3 REQD



TOLERANCES UNLESS OTHERWISE NOTED DECIMALS FRACTIONS ANGULAR .XX ± .03 ± 1/32 ± 0°30' .XXX ± .010			NATIONAL OPTICAL ASTRONOMY OBSERVATORIES OPERATED BY THE ASSOCIATION OF UNIVERSITIES FOR RESEARCH IN ASTRONOMY UNDER COOPERATIVE AGREEMENT WITH NATIONAL SCIENCE FOUNDATION		
NEXT ASSEMBLY 2150.580-E009	NAME <b>CLAMP</b>		REF FILE 1198		
				USED ON 4M TELE	
SCALE FULL	DESIGNED BY A.J. GERZOFF	DATE 96-05-01	APPROVED BY MKA	DATE 5/1/96	DWG NO 2150.580-B024
DRAWING PRODUCED USING AUTOCAD rel. 12	DRAWN BY A.J. GERZOFF	DATE 96-05-01	APPROVED BY	DATE	REV -
PRINT ISSUED	CHECKED BY	DATE	APPROVED BY	DATE	RELEASED BDC 6-7-96
				SHEET 1 OF 1	