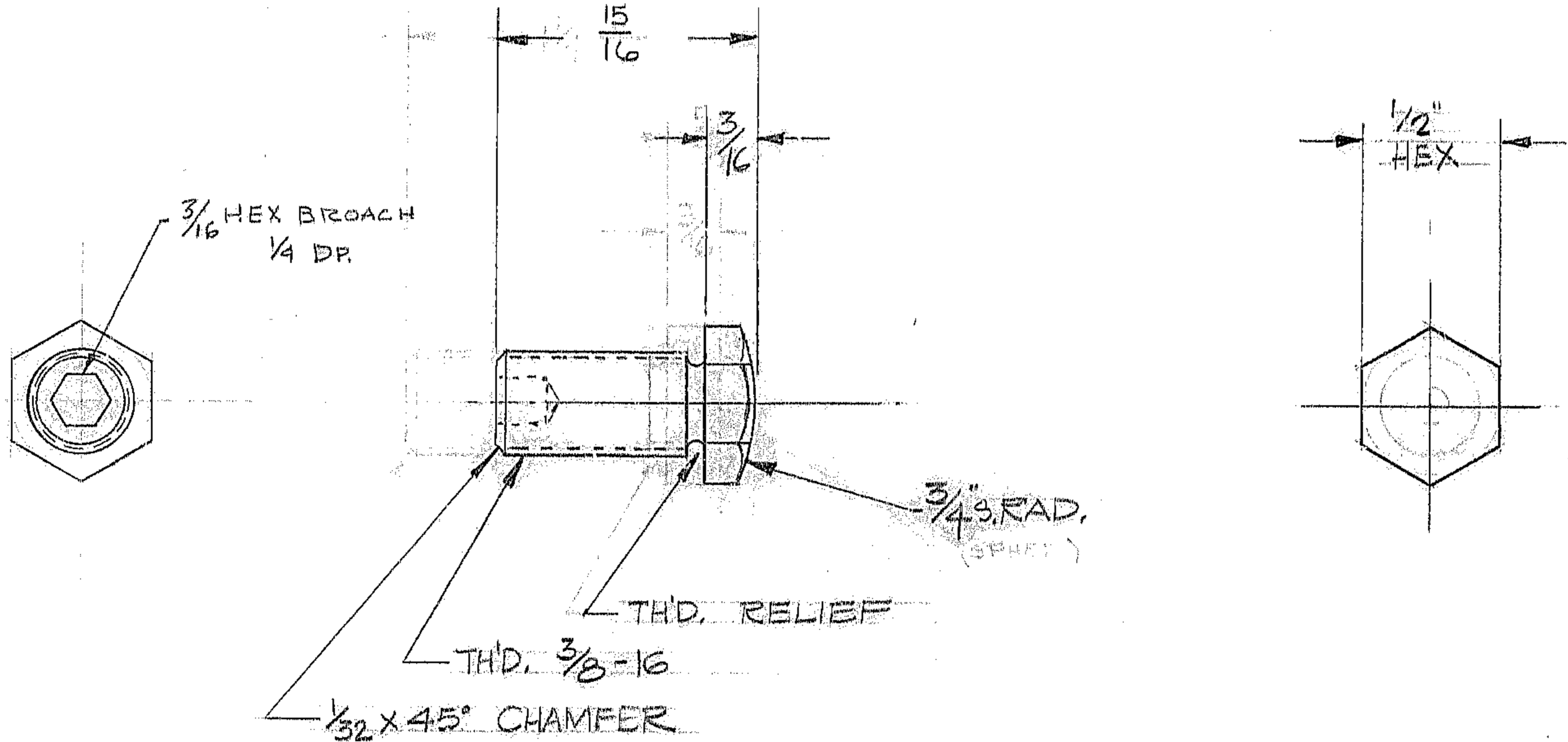


THIS DOCUMENT CONTAINS INFORMATION PROPRIETARY TO WESTERN GEAR CORPORATION. ALL DESIGN, MANUFACTURING, REPRODUCTION, USE, PATENT, AND SALES RIGHTS REGARDING THE SAME ARE HEREBY EXPRESSLY RESERVED BY WESTERN GEAR CORPORATION. THIS DOCUMENT IS SUBMITTED FOR REFERENCE PURPOSES ONLY AND SHALL NOT BE DISCLOSED TO ANY UNAUTHORIZED PERSON OR INCORPORATED INTO ANY OTHER PROJECT.

REVISIONS				
ZONE	LTR	DESCRIPTION	DATE	APPROVED
	A	REVISED PER AURA REQ	3-13-70	WR
	B	CORRECTED PER AURA REQ	12-3-73	RC



REF. FILE 1198

NO. REQ. - 4 PER NEXT ASSEM.
 MAT'L. - H.T. 416 S.S.
 FINISH - FAO G3
 HT. TRT. -

N/A-2150.580E002

LIMITS ON MACHINED DIMENSIONS EXCEPT AS NOTED
 ANGULAR ± 1/2°
 LINEAR
 X = ± .1
 XX = ± .05 .01
 XXX = ± .010 .005
 FRACTIONAL ± 1/32
 BREAK ALL SHARP EDGES

150" STELLAR TELESCOPE
 DRAWN D.N.V.
 CHECK WR 3-15-70
 ENGR RC 3-17-70
 APPROVED

Western GEAR CORPORATION HEAVY MACHINERY DIVISION
 EVERETT, WASHINGTON

RADIAL JACK SCREW
 3/8 MIRROR CELL & SUPPORT ASSY

SIZE	CODE IDENT NO.	REV
B	16603 2150.580B014	B

SCALE 2X WT. 0.3 LB SHEET 1 OF 1