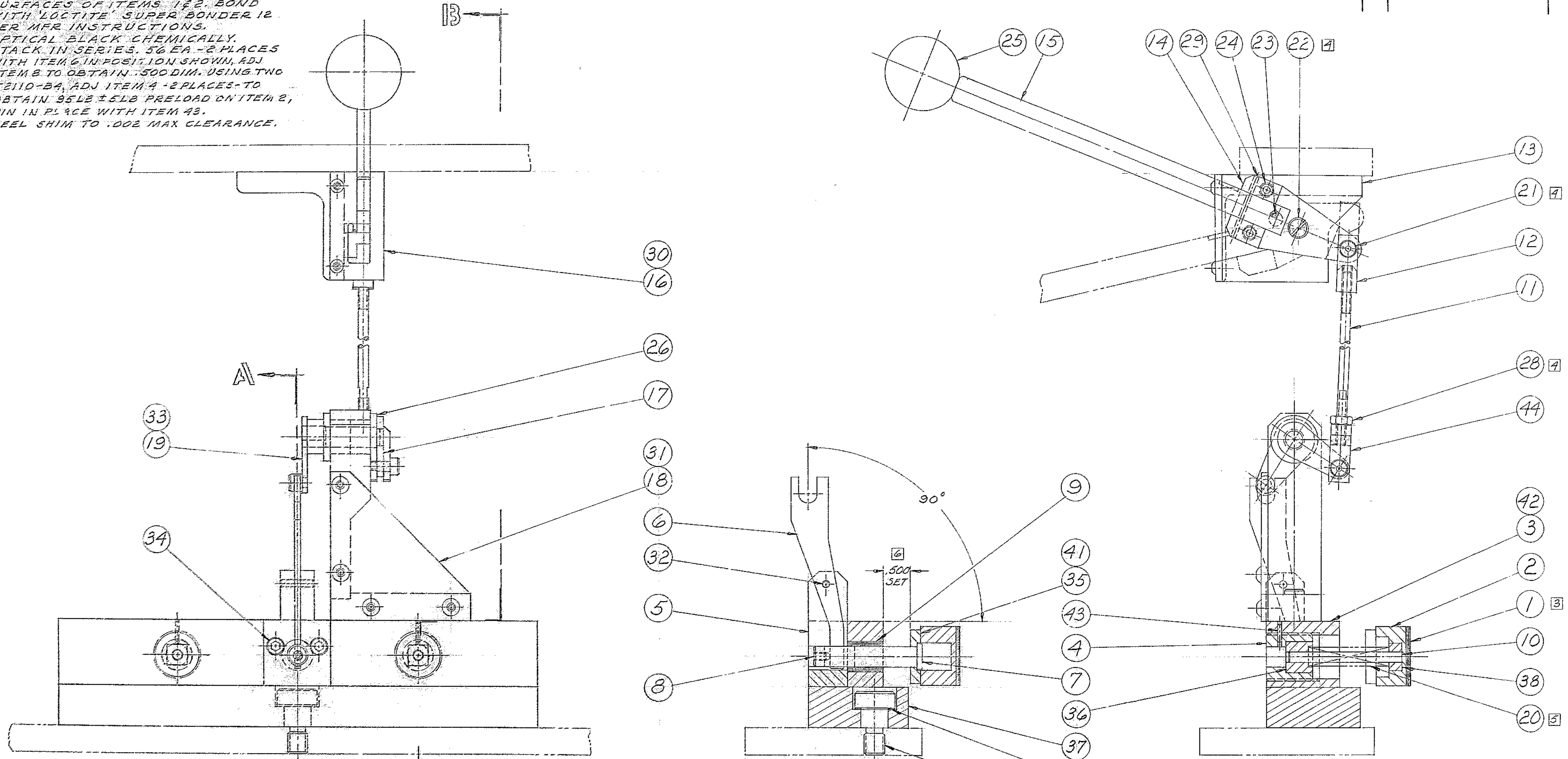


**NOTES: UNLESS OTHERWISE NOTED**

1. REMOVE ALL BURRS AND SHARP EDGES
2. MACHINED SURFACE ROUGHNESS  $125$
3. THOROUGHLY CLEAN & DRY MATING SURFACES OF ITEMS 1 & 2. BOND WITH 'LOCTITE' SUPER BONDER 12 PER MFR INSTRUCTIONS.
4. OPTICAL BLACK CHEMICALLY.
5. STACK IN SERIES, 56 EA. - 2 PLACES
6. WITH ITEM 6 IN POSITION SHOWN, ADJ. ITEM 8 TO OBTAIN .500 DIM. USING TWO T2110-B4, ADJ. ITEM 9 - 2 PLACES - TO OBTAIN .95LB  $\pm$  .15LB PRELOAD ON ITEM 8, PIN IN PLACE WITH ITEM 43.
7. PEEL SHIM TO .002 MAX CLEARANCE.

REVISIONS						
ZONE	LTR	DESCRIPTION	ECR	DATE	BY	APVD
A		REVISED & REDRAWN	1293	10-22-74	LH	



SECTION A-A

SECTION B-B

QTY REQD	PART OR IDENTIFYING NO.	DESCRIPTION	MATERIAL/SPECIFICATION	ZONE	ITEM NO.
<b>PARTS LIST</b>					
<b>150" TELESCOPE</b>					
<b>KITT PEAK NATIONAL OBSERVATORY</b>					
OPERATED BY THE ASSOCIATION OF UNIVERSITIES FOR RESEARCH IN ASTRONOMY, INC. UNDER CONTRACT WITH NATIONAL SCIENCE FOUNDATION					
<b>TOLERANCES</b> UNLESS OTHERWISE NOTED DECIMALS FRACTIONS .XX $\pm$ .03 $\pm$ -- .XXX $\pm$ .010 ANGULAR $\pm$ 0° 30'				NAME <b>BRAKE ASSY</b> <b>PRIME FOCUS CAGE</b> <b>OBSERVERS SEAT</b>	
NEXT ASSEMBLY 2150.560-5002 & A002				REF. FILE 1196	
SCALE 1:1 PRINT ISSUED		DESIGNED BY H.A.G.R. DATE 10-10-72 DRAWN BY H.A.G.R. DATE 10-10-72 CHECKED BY W.L.S.O. DATE 11-8-73		APPROVED BY G.B.H.A.M. DATE 2-4-74 DATE 11-8-73 DWG NO. 2150.560-D702 REV A	