

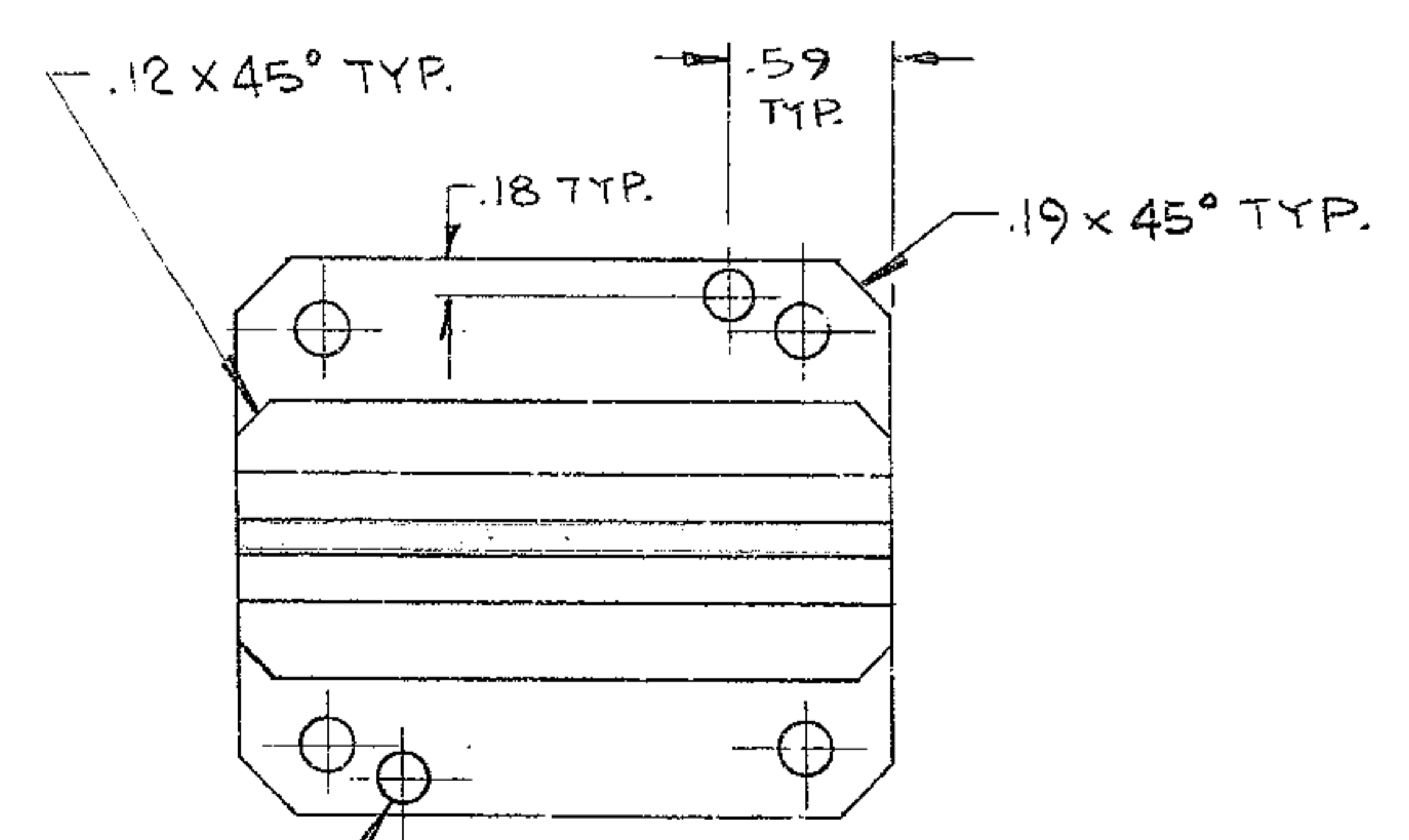
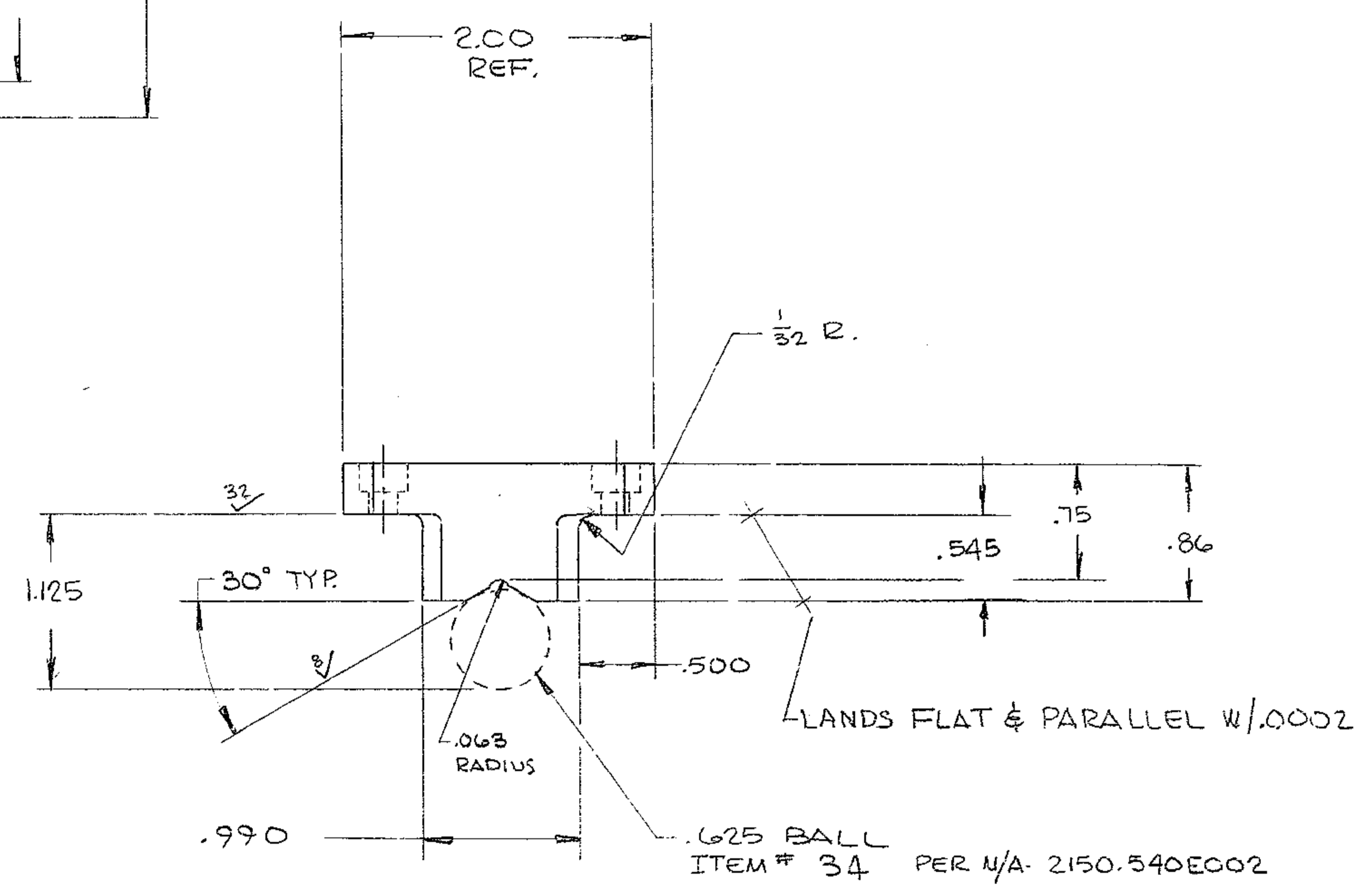
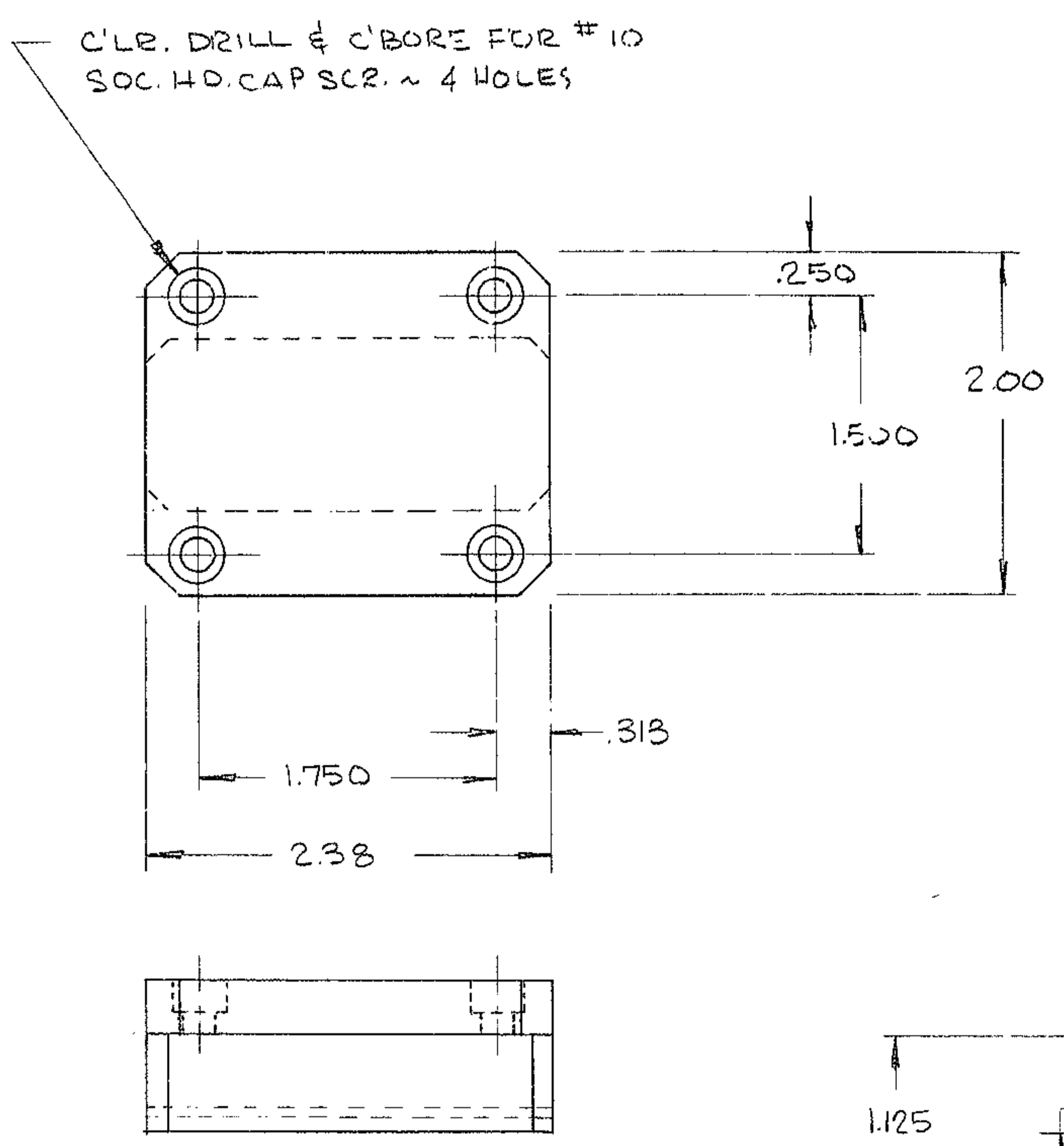
4

3

2

1

REVISIONS				
ZONE	LTR	DESCRIPTION	DATE	APPROVED
A		REVISED PER AURA REQ.	3-5-70	WJR



DRILL & REAM .187 PRESS SOFT PLUGS BEFORE GRIND - PLUGS SHOULD HAVE PILOT DRILL FOR 1/8 DOWEL

NOTES:  
(1) MACH.  $\checkmark$  A.O. & NOTED

1194

NO. REQ. - 2 PER NEXT ASSEM.  
MATL. - SAE 52100 ST.  
FINISH -  $\checkmark$  & NOTED  
HT. TRT. - H.T. RC 60-65

N/A-2150.540E002

FIND NO.	PART NO.	DESCRIPTION	QTY	MATERIAL	CODE IDENT
LIST OF MATERIAL (LM)					
LIMITS ON MACHINED DIMENSIONS EXCEPT AS NOTED ANGULAR = $\pm$ <del>1/32</del> 1/2° LINEAR: X = $\pm$ .1    XXX = $\pm$ .010, .003 .XX = $\pm$ .03, .01 FRACTIONAL = $\pm$ 1/32		150" STELLAR TELESCOPE		WESTERN GEAR CORPORATION HEAVY MACHINERY DIVISION EVERETT, WASHINGTON	
BREAK ALL SHARP EDGES		DRAWN R. HARVEZ	4-22-69	DEFINING BALL RACEWAY PRIME FOCUS PEDESTAL ASS'Y	
MATERIAL		CHECK W.R.	3-9-70		
		ENGR	3-9-70	SIZE	CODE IDENT NO.
		APPROVED		C 16603	2150.540C008
				SCALE FULL	WT .75
				LB	SHEET 1 OF 1
				REV	$\Delta$