

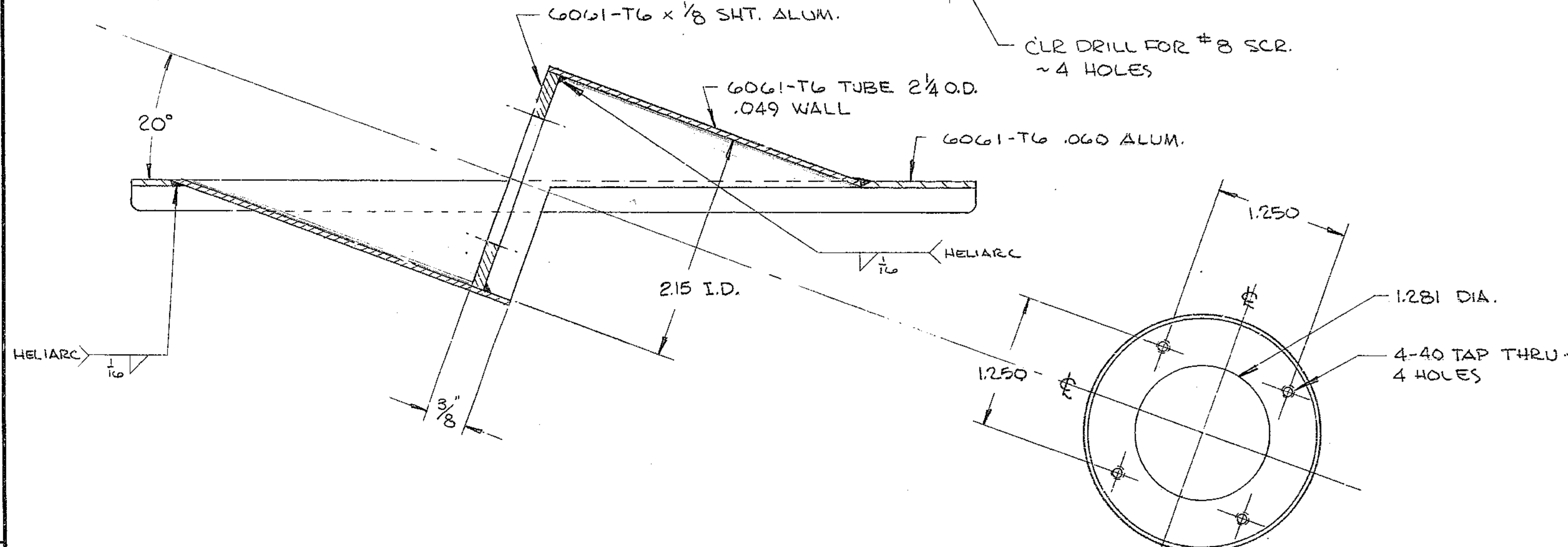
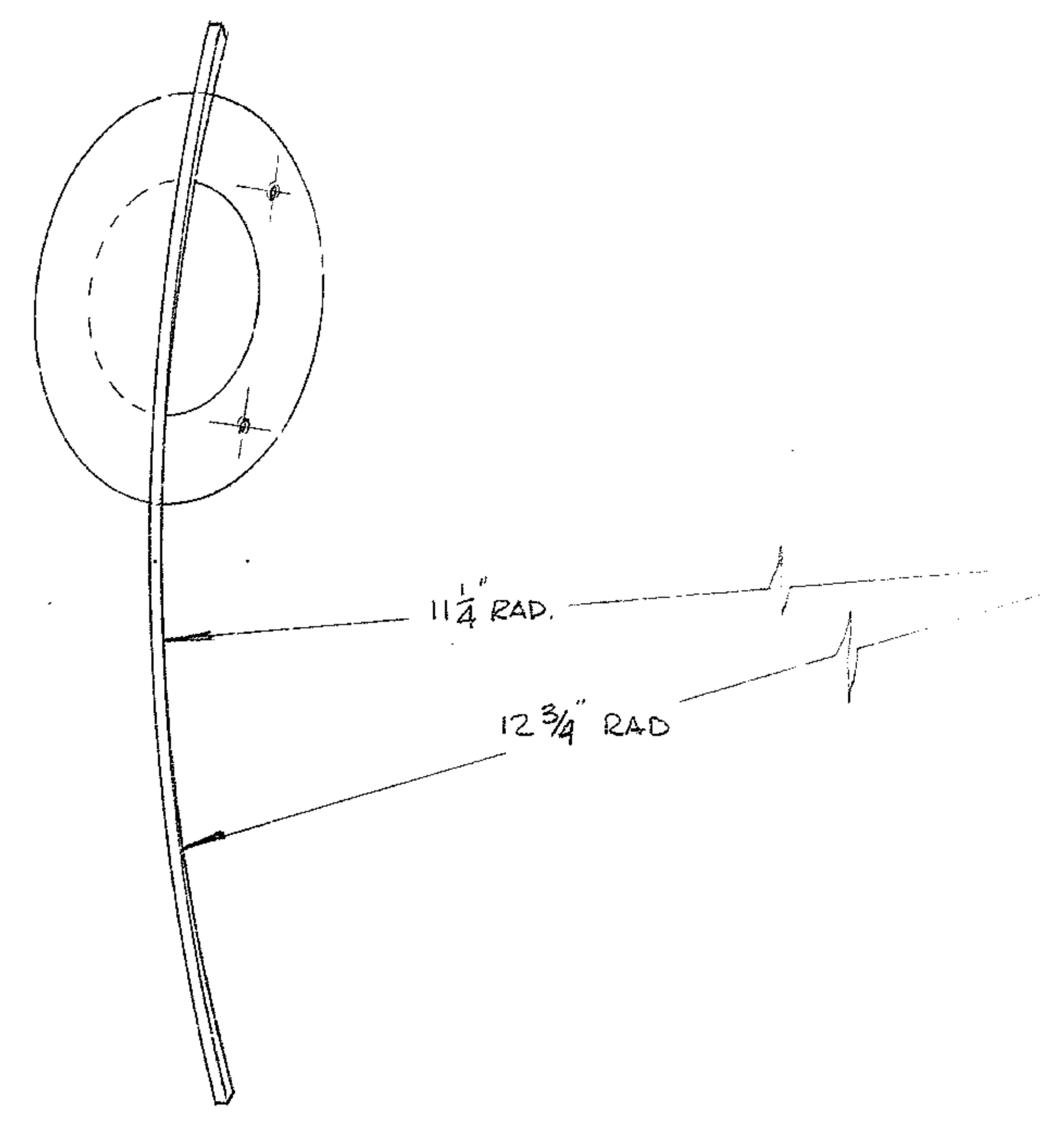
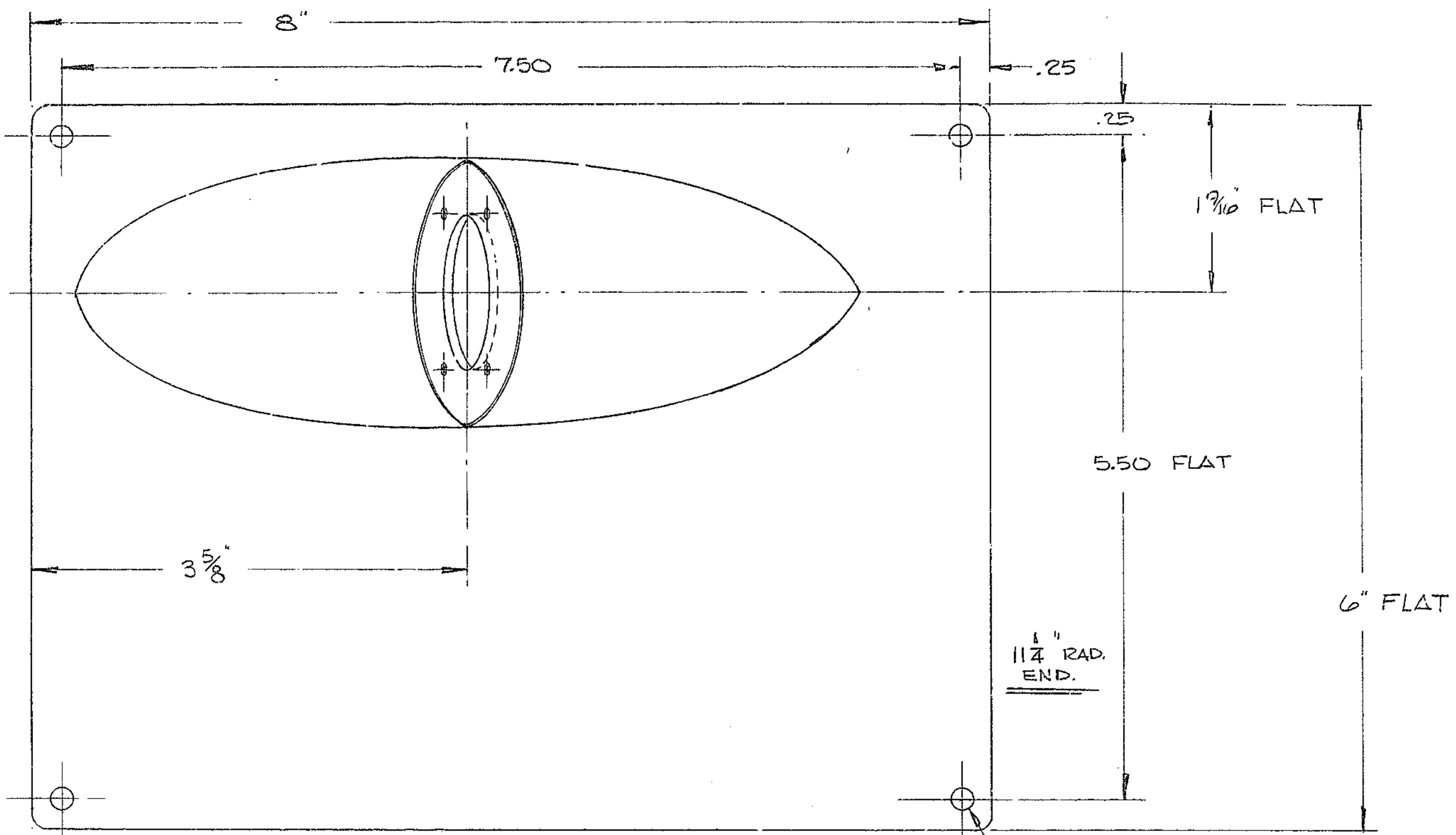
4

3

2

1

| REVISIONS | | | | |
|-----------|-----|-----------------------|---------|----------|
| ZONE | LTR | DESCRIPTION | DATE | APPROVED |
| | A | REVISED PER AURA REQ. | 2-27-70 | |



REF. FILE 1194

NO. REQ. = 1 PER NEXT ASSEM.
 MATL. = NOTED
 FINISH = BLACK ANODIZE
 HT. TRT. =

N/A-2150.540C007

NOTES!
 MAKE PART IN FLAT ~ HAND FORM TO CONE.

| FIND NO. | PART NO. | DESCRIPTION | QTY | MATERIAL | CODE IDENT |
|--|----------|------------------------|-----|---|-----------------|
| LIST OF MATERIAL (LM) | | | | | |
| LIMITS ON MACHINED DIMENSIONS EXCEPT AS NOTED ANGULAR = ± 1/2° LINEAR: .X = ± .1 .XXX = ± .003 .XX = ± .01 FRACTIONAL = ± 1/32 | | 150" STELLAR TELESCOPE | | WESTERN GEAR CORPORATION HEAVY MACHINERY DIVISION EVERETT, WASHINGTON | |
| DRAWN RCHAVEL 4-22-69 | | CHECK WR 2-27-70 | | MOTOR CONNECTOR COVER | |
| ENGR [Signature] 3-5-70 | | APPROVED | | PRIME FOCUS PEDESTAL ASS'Y | |
| MATERIAL | | SIZE | | CODE IDENT NO. | REV |
| | | C | | 16603 | A |
| | | SCALE FULL | | WT .32 | LB SHEET 1 OF 1 |