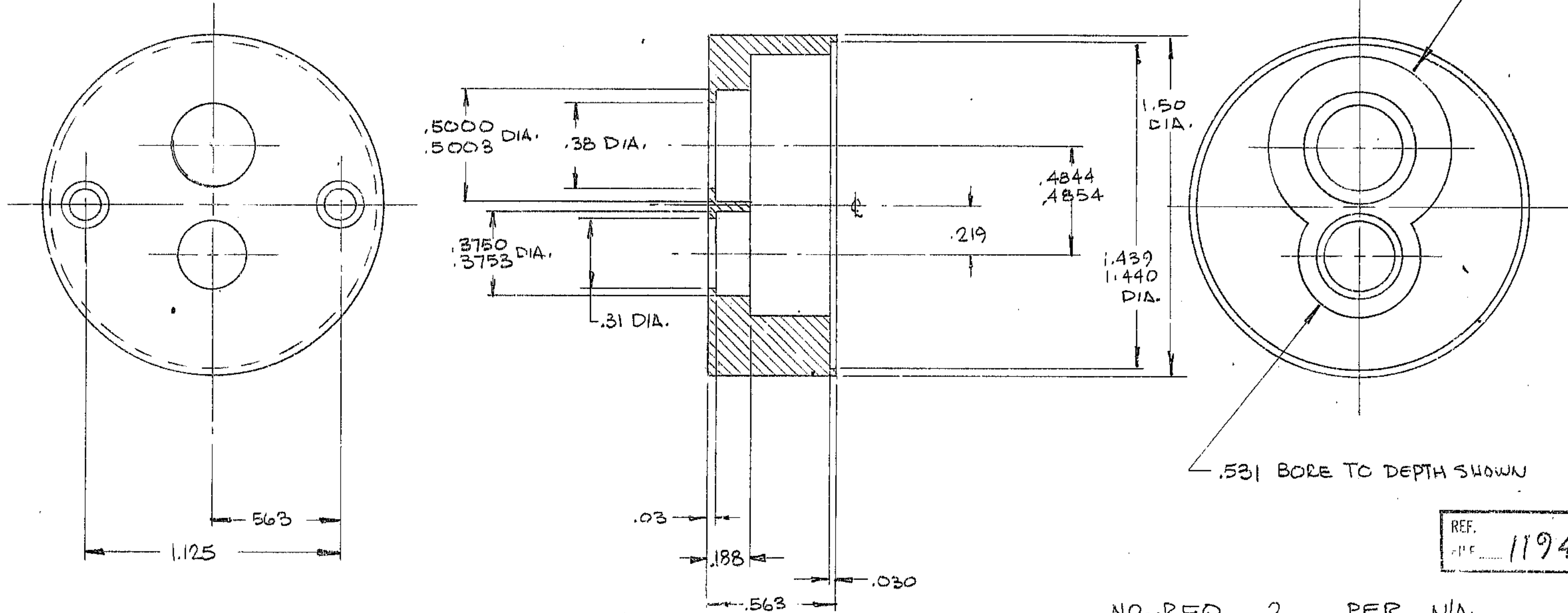


THIS DOCUMENT CONTAINS INFORMATION PROPRIETARY TO WESTERN GEAR CORPORATION. ALL DESIGN, MANUFACTURING, REPRODUCTION, USE, PATENT, AND SALES RIGHTS REGARDING THE SAME ARE HEREBY EXPRESSLY RESERVED BY WESTERN GEAR CORPORATION. THIS DOCUMENT IS SUBMITTED FOR REFERENCE PURPOSES ONLY AND SHALL NOT BE DISCLOSED TO ANY UNAUTHORIZED PERSON OR INCORPORATED INTO ANY OTHER PROJECT.

REVISIONS				
ZONE	LTR	DESCRIPTION	DATE	APPROVED
A		CORRECTED PER AURA REQ.	12-3-73	RC



NO. REQ. 2 PER N/A.
 MATL - 2024-T4 ALUM
 FINISH - BLACK ANODIZE

N/A 2150.540 E102.

LIMITS ON MACHINED DIMENSIONS EXCEPT AS NOTED ANGULAR $\pm \pm \frac{1}{2}^\circ$ LINEAR .X = $\pm .1$.XX = $\pm .001$.XXX = $\pm .0003$ FRACTIONAL $\pm 1/32$ BREAK ALL SHARP EDGES	150 STELLAR TELESCOPE	WESTERN GEAR CORPORATION HEAVY MACHINERY DIVISION EVERETT, WASHINGTON		
	DRAWN RC	GEAR HSG - UPPER		
	CHECK	PRIME FOCUS DRIVE ASS'Y		
	ENGR	SIZE	CODE IDENT NO.	REV
APPROVED	B	16603	2150-540 B119	A
	SCALE 2X	WT.	LB	SHEET OF