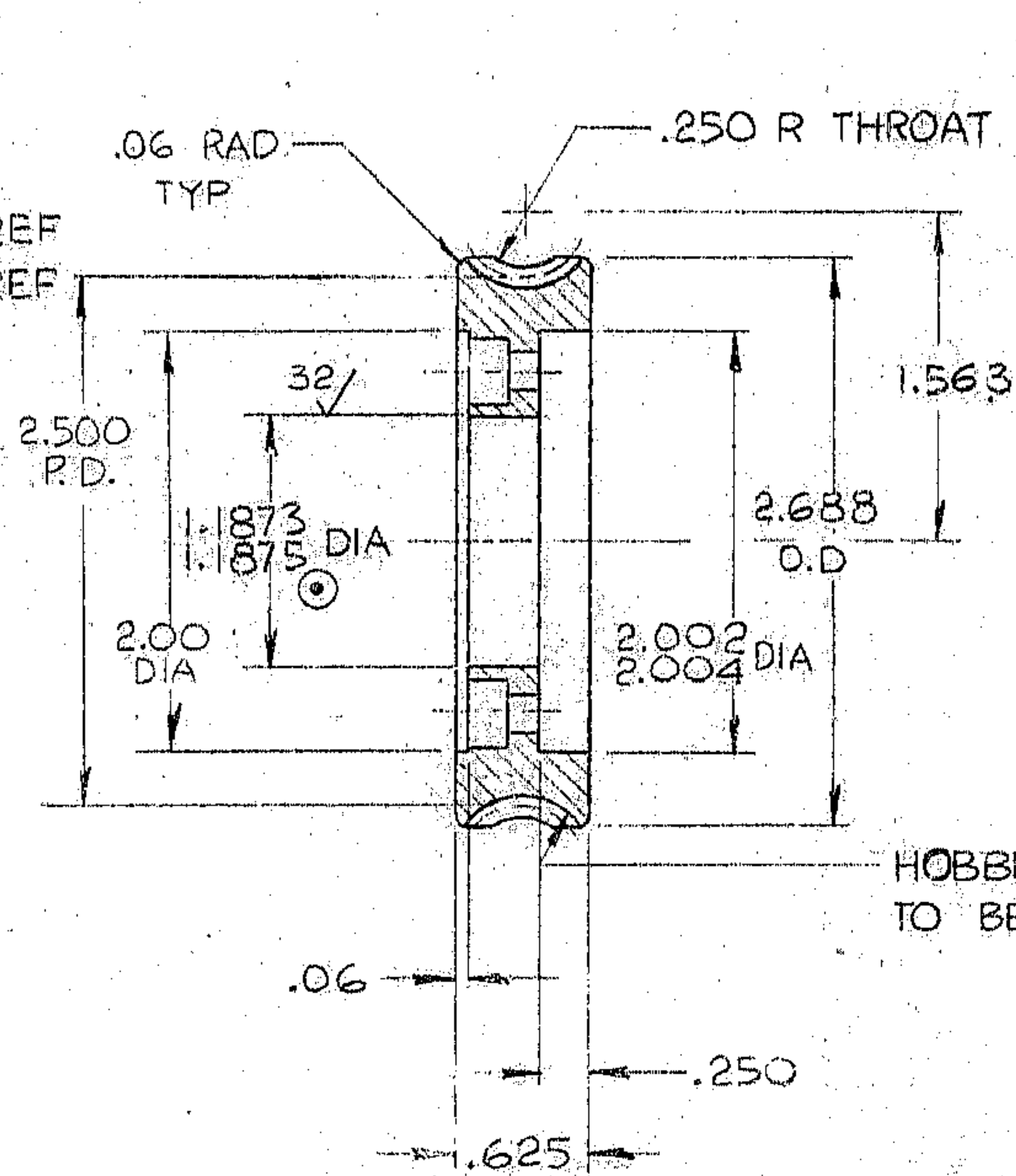


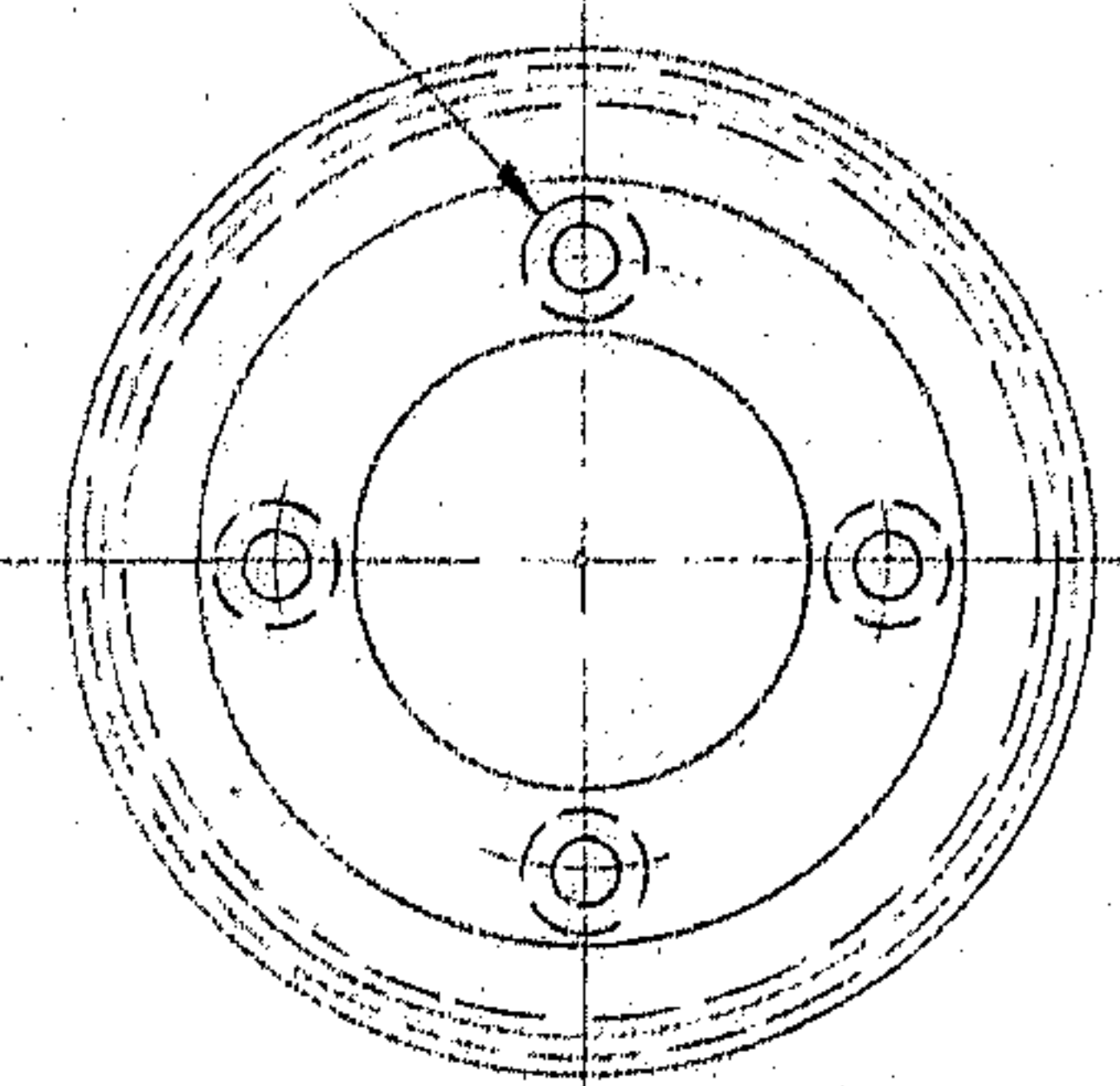
THIS DOCUMENT CONTAINS INFORMATION PROPRIETARY TO WESTERN GEAR CORPORATION. ALL DESIGN, MANUFACTURING, REPRODUCTION, USE, PATENT, AND SALES RIGHTS REGARDING THE SAME ARE HEREBY EXPRESSLY RESERVED BY WESTERN GEAR CORPORATION. THIS DOCUMENT IS SUBMITTED FOR REFERENCE PURPOSES ONLY AND SHALL NOT BE DISCLOSED TO ANY UNAUTHORIZED PERSON OR INCORPORATED INTO ANY OTHER PROJECT.

REVISIONS				
ZONE	LTR	DESCRIPTION	DATE	APPROVED
	A	REVISED PER AURA REQ	2-17-70	WR

WORM GEAR DATA	
NO. OF TEETH	40
DIAMETRAL PITCH	16
THRD.	2 RH
PRESSURE ANGLE	14 1/2°
AGMA QUALITY (PRECISION 2)	#12
HELIX ANGLE	11° 19'
WORM P.D.	.625
CENTER DISTANCE WITH WORM :	1.563 1.564



CLEARANCE DRILL & C'BORE FROM FAR SIDE FOR NO. 10 SCREW - 4 HOLES EQ SP ON 1.625 DIA B.C.



REF. FILE 1194

NO. REQ. - PER NEXT ASSEM.
 MAT'L - ALUM BRONZE
 FINISH - AMPCO #15 OR EQUAL
 HT. TRT. - 50000 PSI MIN YIELD

- NOTE:
1. MAKE ARBOR WITH FLANGE FOR HOBGING.
 2. ALL MACHINED SURFACES TO BE 63/ OR BETTER, UNLESS OTHERWISE SPECIFIED.
 3. DIA'S MARKED ⊙, TO BE CONCENTRIC TO P.D. WITHIN .0003 T.I.R.

LIMITS ON MACHINED DIMENSIONS EXCEPT AS NOTED
 ANGULAR ± 1/2°
 LINEAR
 X = ± .1
 XX = ± .01
 XXX = ± .003
 FRACTIONAL ± 1/32
 BREAK ALL SHARP EDGES .01 X 45°

150 INCH STELLAR TELESCOPE
 DRAWN MMS
 CHECK WR 2-12-70
 ENGR [Signature] 3-9-70
 ORIGINAL
 APPROVED

Western GEAR CORPORATION HEAVY MACHINERY DIVISION, EVERETT, WASHINGTON

WORM GEAR
 PRIME FOCUS PEDESTAL ASS'Y

SIZE	CODE IDENT NO.	REV
B	16603	A
SCALE FULL	WT. .61 LB	SHEET 1 OF 1

N/A - 2150.540E102