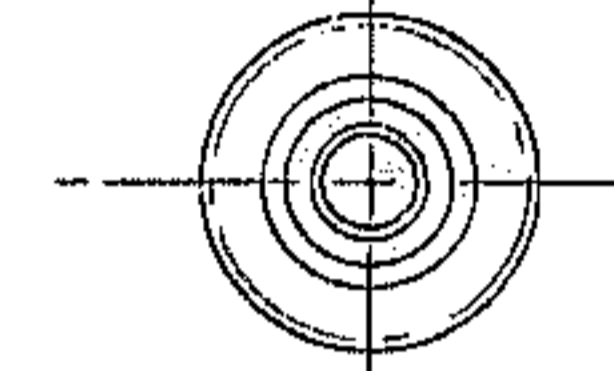
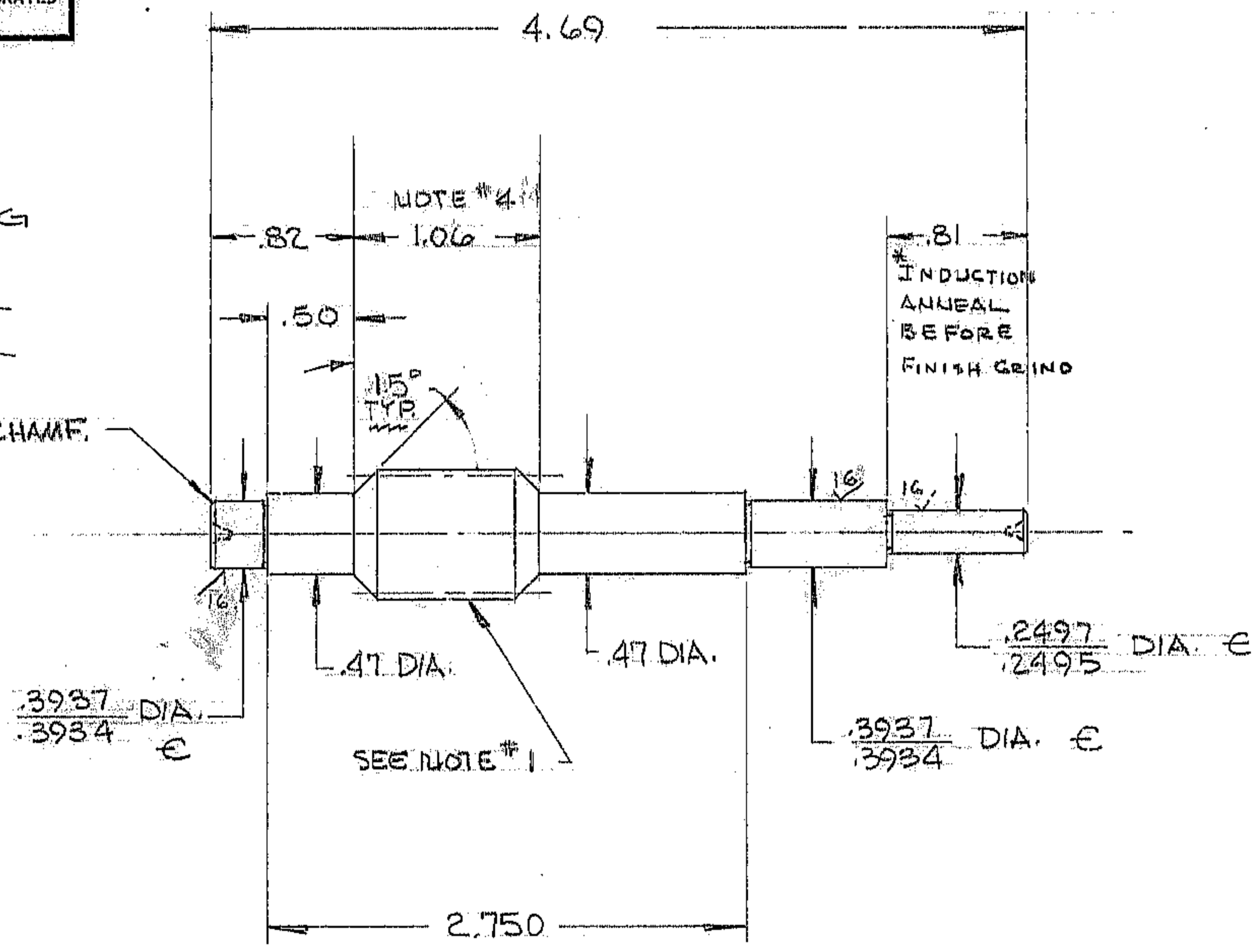


THIS DOCUMENT CONTAINS INFORMATION PROPRIETARY TO WESTERN GEAR CORPORATION. ALL DESIGN, MANUFACTURING, REPRODUCTION, USE, PATENT, AND SALES RIGHTS REGARDING THE SAME ARE HEREBY EXPRESSLY RESERVED BY WESTERN GEAR CORPORATION. THIS DOCUMENT IS SUBMITTED FOR REFERENCE PURPOSES ONLY AND SHALL NOT BE DISCLOSED TO ANY UNAUTHORIZED PERSON OR INCORPORATED INTO ANY OTHER PROJECT.

REVISIONS				
ZONE	LTR	DESCRIPTION	DATE	APPROVED
	A	REVISED PER AURA REQ	2-27-70	WR

WORM DATA	
PITCH DIA.	.625
O.D.	.750
THRD.	2 R.H.
PRESSURE ANGLE	14 1/2°
HELIX ANGLE	11°-19'
DIAMETRAL PITCH	16

.03 x 45° CHAMF. TYP.



REF. FILE 1194

- NOTE:
1. GRIND & POLISH TOOTH CONTACT SURFACES TO  $\sqrt{\text{V}}$  OR BETTER €
  2. HARDEN & GRIND (SEE NOTE #1)
  3. DIAS. MARKED WITH € TO BE CONCENTRIC TO  $\phi$  WITHIN .0003 T.I.R.
  4. DRI FILM LUB.
- LEAVE .010 PER SIDE FOR GRIND

NO. REQ. = 1 PER NEXT ASSEM.  
 MAT'L = SAE 52100  
 FINISH = DRY LUBE  
 HT. TRT. = RC57-63

N/A - 2150.540E102

LIMITS ON MACHINED DIMENSIONS EXCEPT AS NOTED ANGULAR $\pm 1/2^\circ$ LINEAR X = $\pm .1$ .XX = $\pm .001$ .XXX = $\pm .0003$ FRACTIONAL $\pm 1/32$  BREAK ALL SHARP EDGES	150" STELLAR TELESCOPE	<b>Western GEAR CORPORATION</b> HEAVY MACHINERY DIVISION EVERETT, WASHINGTON	
	DRAWN R. CHAVEZ 3-28-69 CHECK WR 2-27-70 ENGR R 7-9-70	FOCUS DRIVE WORM PEDESTAL DRIVE ASSY	
APPROVED	SIZE B	CODE IDENT NO. 16603	REV A
	SCALE FULL	WT. 24 LB	SHEET 1 OF 1