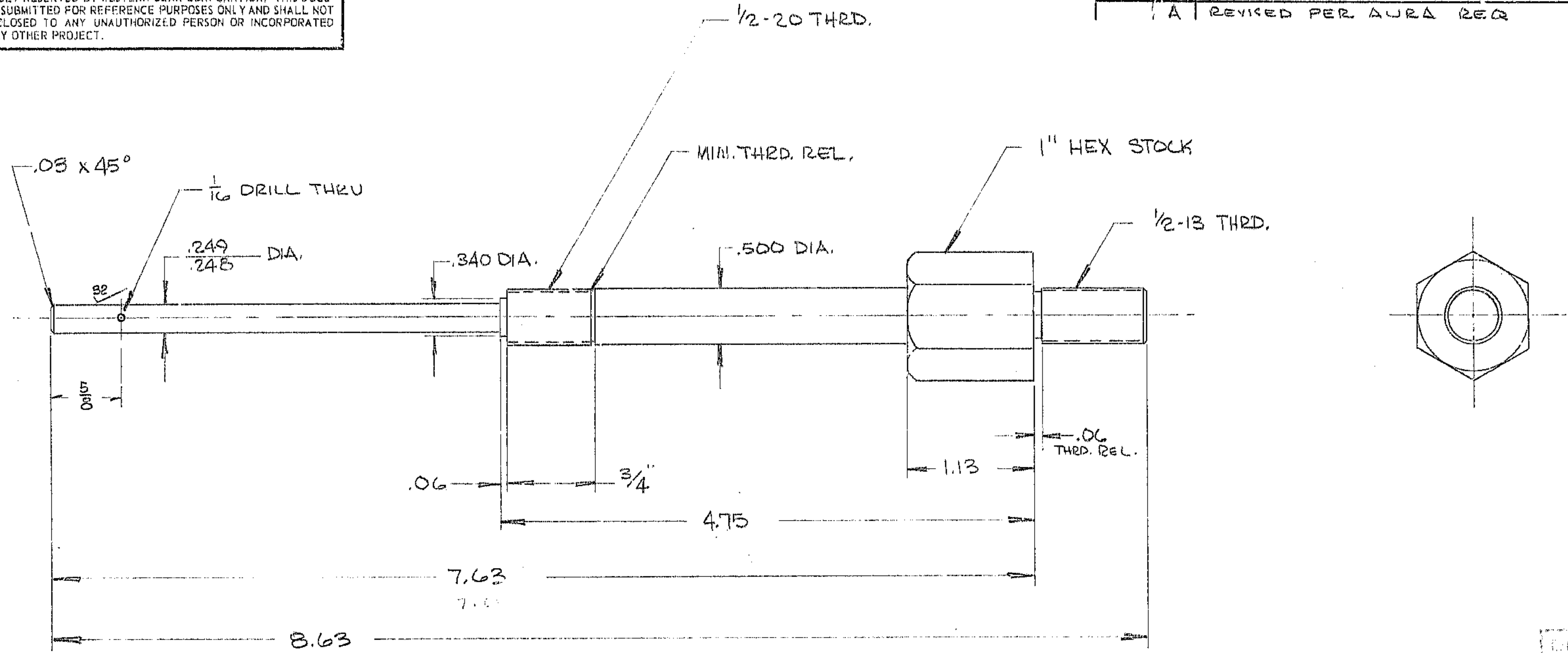


THIS DOCUMENT CONTAINS INFORMATION PROPRIETARY TO WESTERN GEAR CORPORATION. ALL DESIGN, MANUFACTURING, REPRODUCTION, USE, PATENT, AND SALES RIGHTS REGARDING THE SAME ARE HEREBY EXPRESSLY RESERVED BY WESTERN GEAR CORPORATION. THIS DOCUMENT IS SUBMITTED FOR REFERENCE PURPOSES ONLY AND SHALL NOT BE DISCLOSED TO ANY UNAUTHORIZED PERSON OR INCORPORATED INTO ANY OTHER PROJECT.

REVISIONS				
ZONE	LTR	DESCRIPTION	DATE	APPROVED
A		REVISED PER AURA REQ	2-27-70	WR



REF. 1194

NO. REQ. = 2 PER NEXT ASSEM.  
 MAT'L = H.T. 416 ST. STL.  
 FINISH = PASSIVATE  
 HT. TRT. =

N/A-2150.540E002

LIMITS ON MACHINED DIMENSIONS EXCEPT AS NOTED ANGULAR ± 1/2° LINEAR X = ± .1 XX = ± .01 XXX = ± .003 FRACTIONAL ± 1/32 BRFAK ALL SHARP EDGES	150" STELLAR TELESCOPE		<b>WESTERN GEAR CORPORATION</b> HEAVY MACHINERY DIVISION EVERETT, WASHINGTON	
	DRAWN R. CHAVEZ		LIMIT & SAFETY STUD	
	CHECK WR 2-27-70		PRIME FOCUS PEDESTAL ASS'Y	
	ENGR. [Signature] 3-9-70		ORIGINAL APPROVED	SIZE B CODE IDENT NO. 16603 2150.540B012 SCALE FULL WT. 30 LB SHEET 1 OF 1