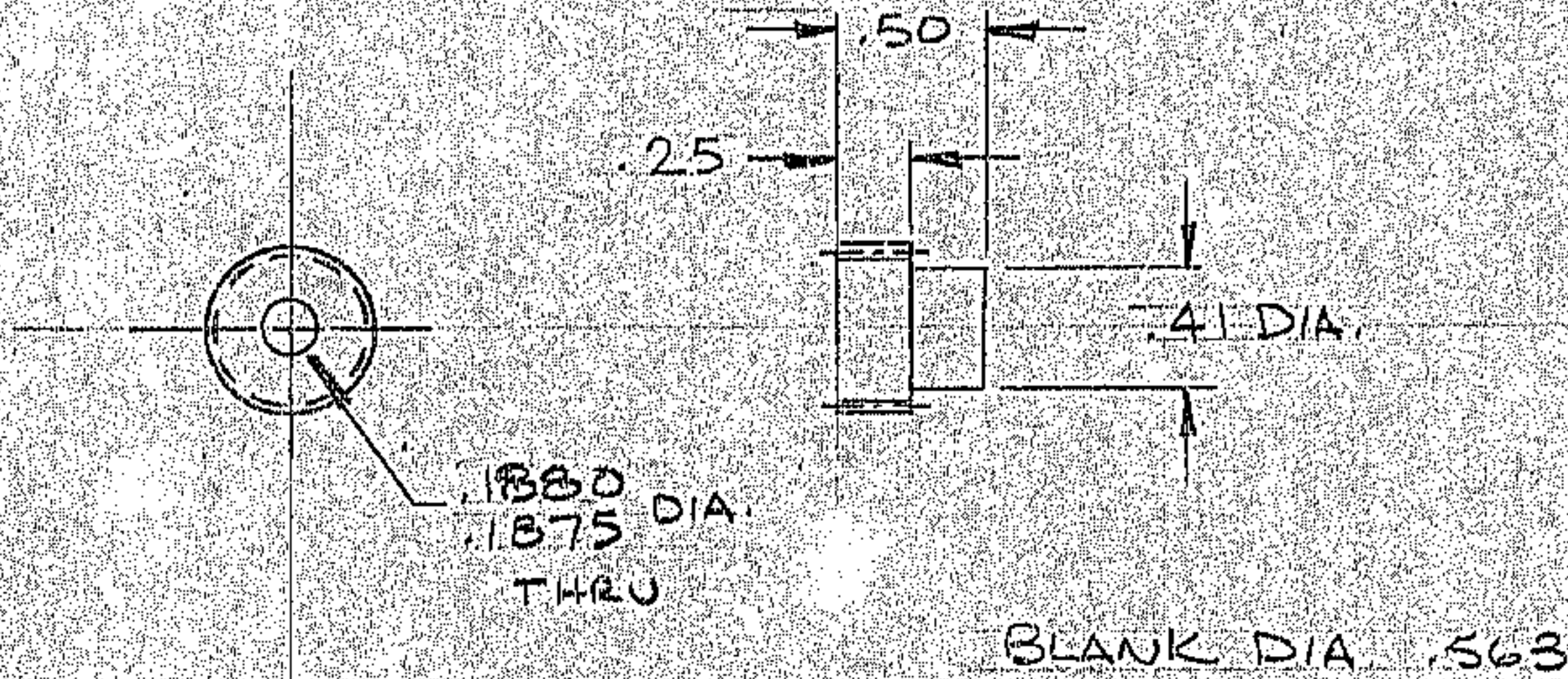


REVISIONS

LTR	DESCRIPTION	DATE	APPROVED
A	CORRECTED PER AURA REQ.	12-3-73	RC



SPUR GEAR DATA

DIAMETRAL PITCH	32
PRESSURE ANGLE	20°
NO. OF TEETH	16
PITCH DIA.	.500
OUTSIDE DIA.	.563
CLASS	COMM'L
BACKLASH	
TOP HOB	YES

REF. FILE 1194

NO. REQ. 2 PER N/A

MAT'L - NYLON

N/A 2150.540 E102

LIMITS ON MACHINED DIMENSIONS EXCEPT AS NOTED  
 ANGULAR ± 1/2°  
 LINEAR  
 X = ± .1  
 XX = ± .03 .01  
 XXX = ± .010 .003  
 FRACTIONAL ± 1/32  
 BREAK ALL SHARP EDGES

150" STELLAR TELESCOPES  
 DRAWN RC  
 CHECK  
 ENGR  
 APPROVED

**WESTERN GEAR CORPORATION** HEAVY MACHINERY DIVISION  
 EVERETT, WASHINGTON

DRIVE GEAR  
 PRIME FOCUS DRIVE ASS'Y

SIZE	CODE IDENT NO.	REV
A	16603	A

SCALE FULL WT. LB SHEET 1 OF 1