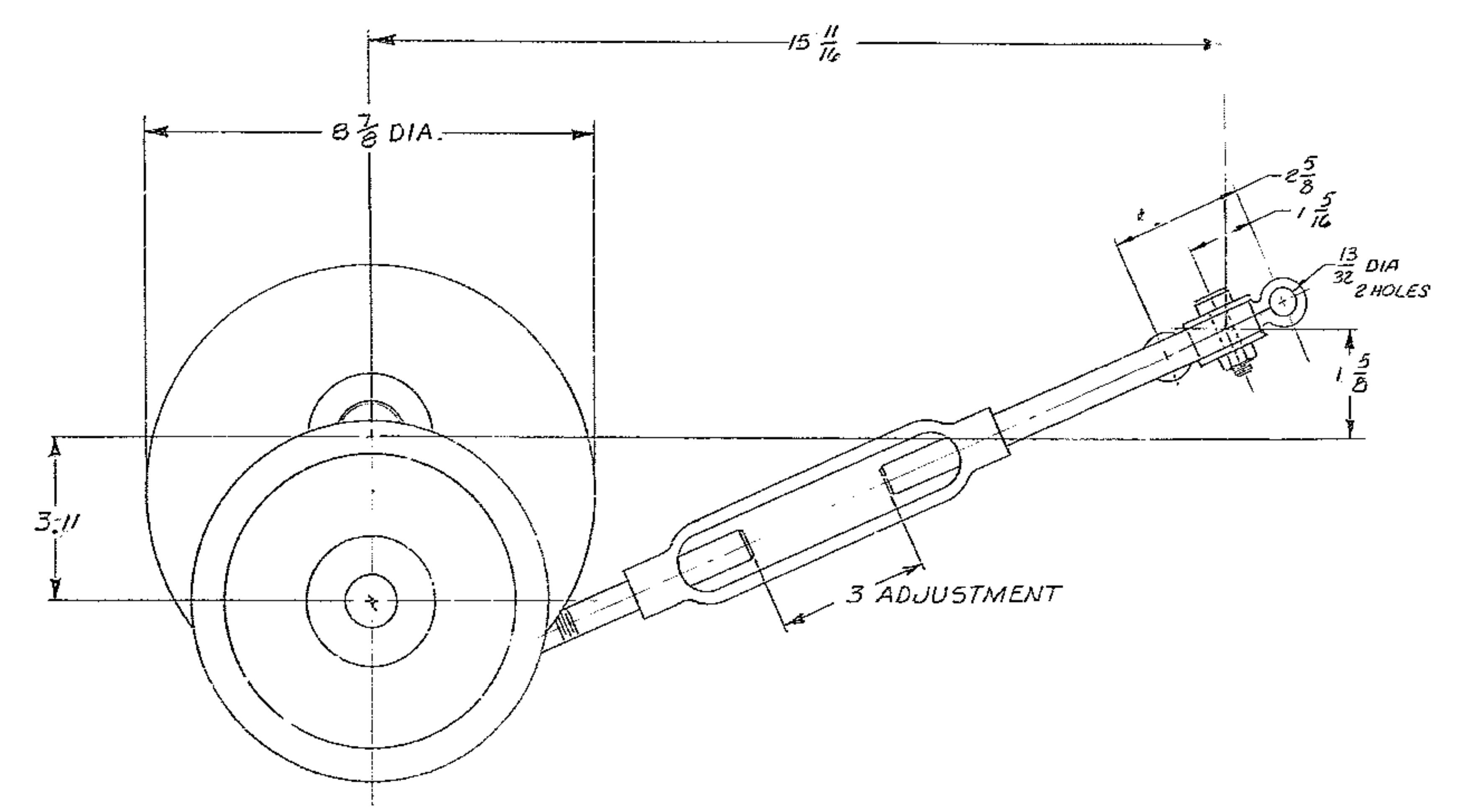
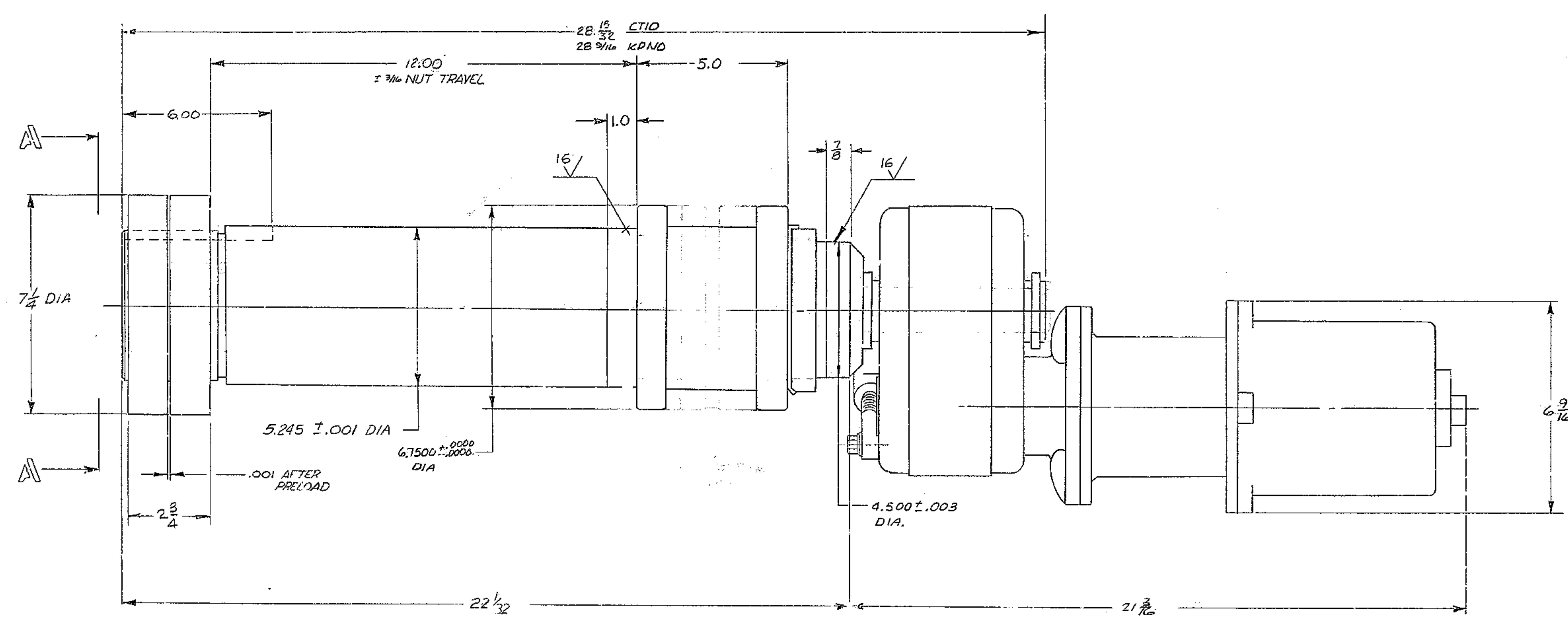
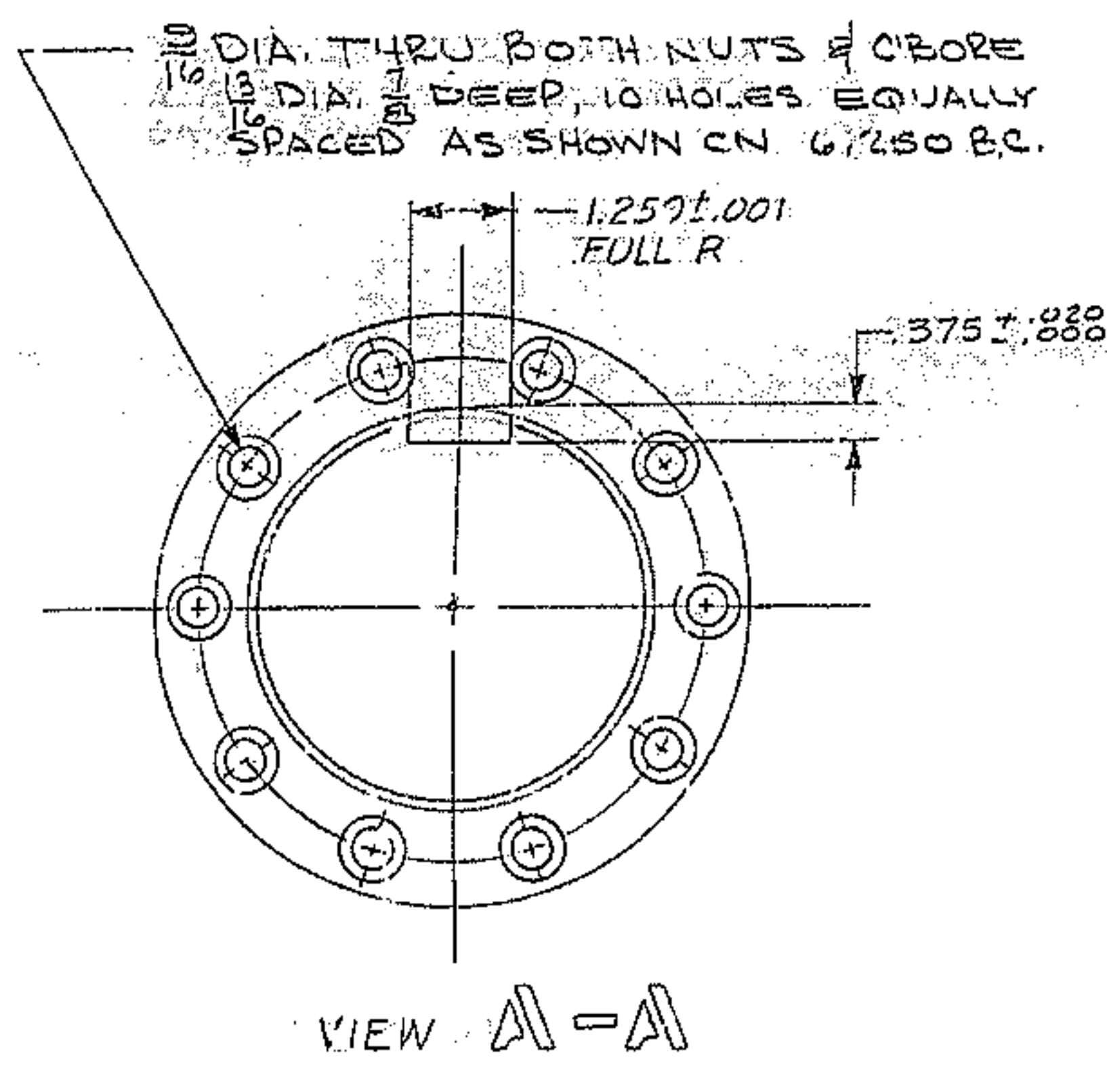


REVISIONS				
ZONE	LR	DESCRIPTION	DATE	APPROVED
E-1	A	REVISED PER AURA APPD PRINT	11-3-68	
F-6	A	1 1/2 DIA HOLE WAS 1 3/32	10-3-68	
F-6	A	28 3/32 WAS 29.44	10-3-68	
B		DELETED OUTER BEARING SPLICE	5-24-69	LDS
C		2 1/4 WAS 20 ADD 28 3/16 KPN D	7-15-73	LDS



WESTERN GEAR CORPORATION  
CONSTRUCTION PROJECTS  
DEPARTMENT  
APPROVED FOR  
PROCUREMENT  
DATE 12-15-68

FABRICATION TOLERANCES  
EXCEPT AS NOTED  
UP TO 10 INCHES ± 1/16  
10 TO 50 INCHES ± 1/8  
50 INCHES AND ABOVE ± 1/4

NEXT ASSEMBLY: 2150.500 E 001 (WGN. 102,801)

FIND NO.	PART NO.	DESCRIPTION	QTY	MATERIAL	CODE IDENT
LIST OF MATERIAL (LM)					
LIMITS ON MACHINED DIMENSIONS EXCEPT AS NOTED					
ANGULAR = ± 1° 0'					
LINEAR:					
XX = ± .03 FRACTIONAL = ± 1/32					
BREAK ALL SHARP EDGES					
MATERIAL					
150 IN STELLAR TELESCOPE MOUNTING					
DRAWN BY <i>WGN</i> 11-2-68					
CHECK BY <i>WGN</i> 11-30-68					
ENGR					
WGN 102,847					
APPROVED					
WESTERN GEAR CORPORATION HEAVY MACHINERY DIVISION EVERETT, WASHINGTON					
OUTLINE DRIVE SHAFT					
SCALE 1/2					
WT					
LB SHEET 1 OF 1					

REV. 1193