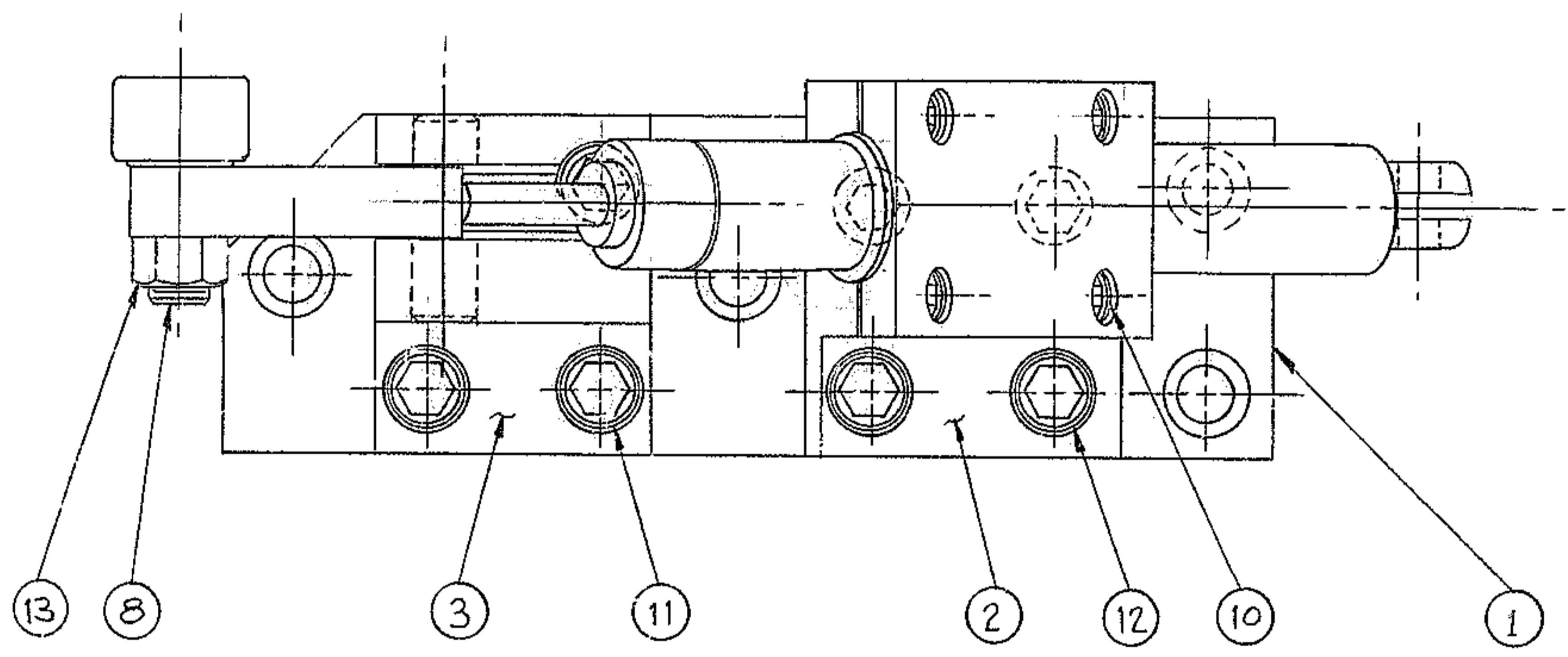
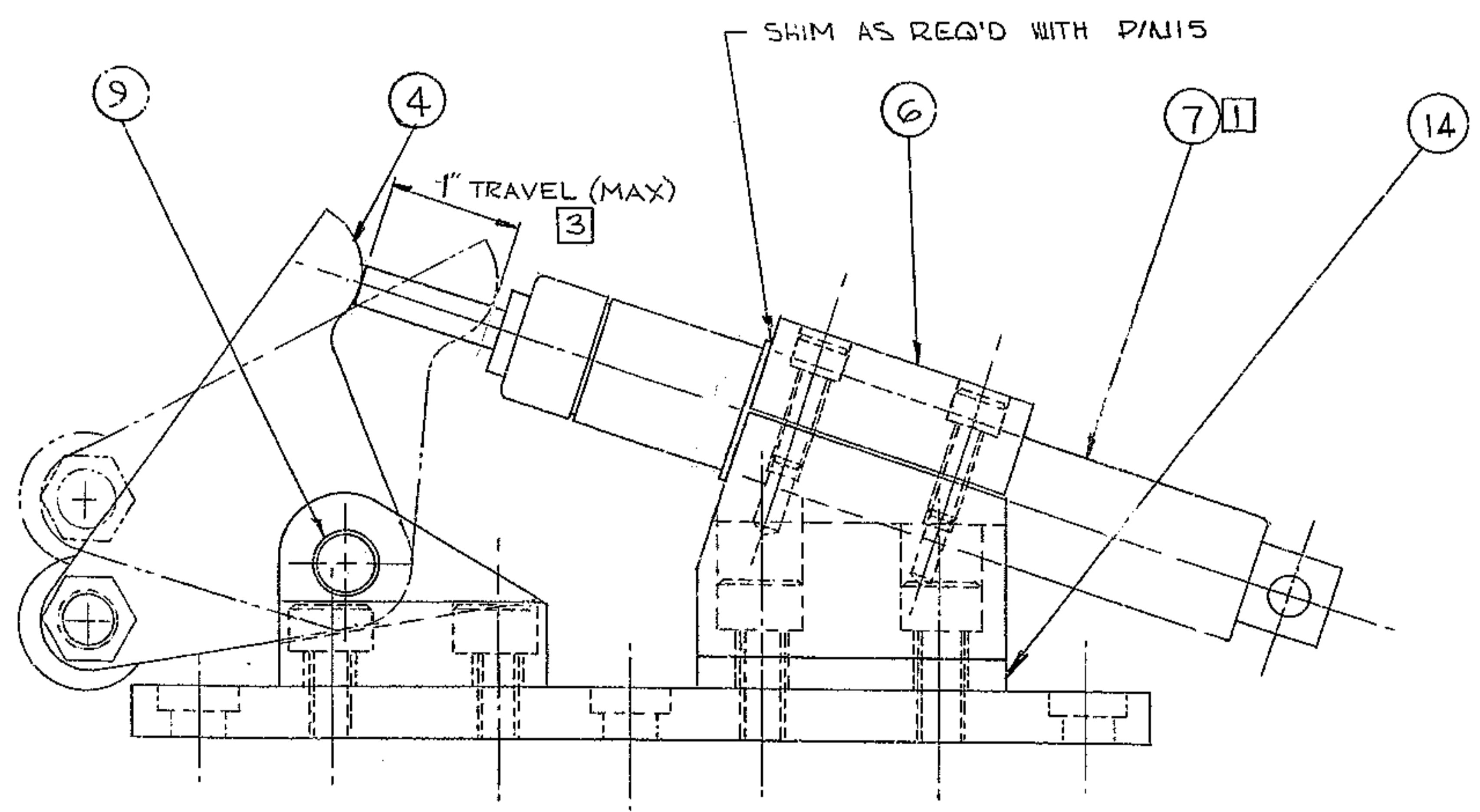


THIS DOCUMENT CONTAINS INFORMATION PROPRIETARY TO WESTERN GEAR CORPORATION. ALL DESIGN, MANUFACTURING, REPRODUCTION, USE, PATENT AND SALES RIGHTS REGARDING THE SAME ARE HEREBY EXPRESSLY RESERVED BY WESTERN GEAR CORPORATION. THIS DOCUMENT IS SUBMITTED FOR REFERENCE PURPOSES ONLY AND SHALL NOT BE DISCLOSED TO ANY UNAUTHORIZED PERSON OR INCORPORATED INTO ANY OTHER PROJECT.

REVISIONS				
ZONE	LTR	DESCRIPTION	DATE	APPROVED
	A	REVISED TO DATE	10-DEC-68	<i>[Signature]</i>
	B	DELETED P/N'S, ADDED P/N 14	7-13-71	JW
	C	CORRECTED PICTORIALY - ADD P/N 15	4-17-73	LDG



- NOTES:
1. APPLY SECOND COAT OF PRIME PAINT & TWO COATS OF FINISH PAINT TO ALL PRIMED SURFACES PER W.G.C. SPEC NO. 511. DO NOT PAINT CYLINDER PLUNGER ROD.
 2. TAG WITH P/N 2150.530D502.
 3. POSITION OF P/N 7 & AMOUNT OF PLUNGER ROD TRAVEL TO BE DETERMINED @ FINAL ASSY



WESTERN GEAR CORPORATION
 CONSTRUCTION PROJECTS
 DEPARTMENT
 APPROVED FOR
 PROCUREMENT
G. B. [Signature] DATE 12/14/67

B/M: 2150.530A502 (WGB 300 311)
 NEXT ASSY: 2150.500E 002 (WGN 102966)

FIND NO.	PART NO.	DESCRIPTION	QTY	MATERIAL	CODE IDENT
LIST OF MATERIAL (LM)					
LIMITS ON MACHINED DIMENSIONS EXCEPT AS NOTED		150" STELLAR TELESCOPE MOUNTING		WESTERN HEAVY MACHINERY DIVISION EVERETT, WASHINGTON	
ANGULAR = ± 1° 0'		DRAWN ELDG RLD 18 SEPT 69		SHOCK ABSORBER ASSY	
LINEAR: X = ± .1 XXX = ± .010		CHECK [Signature] 20 SEP 69		UPPER RING GIRDER ASSY	
XX = ± .03 FRACTIONAL = ± 1/32		ENGR		SIZE CODE IDENT NO. REV	
BREAK ALL SHARP EDGES		MATERIAL		D 16603 2150.530D502 C	
APPROVED		WGD 300 293		SCALE 1/1 WT 10 LB SHEET 1 OF 1	