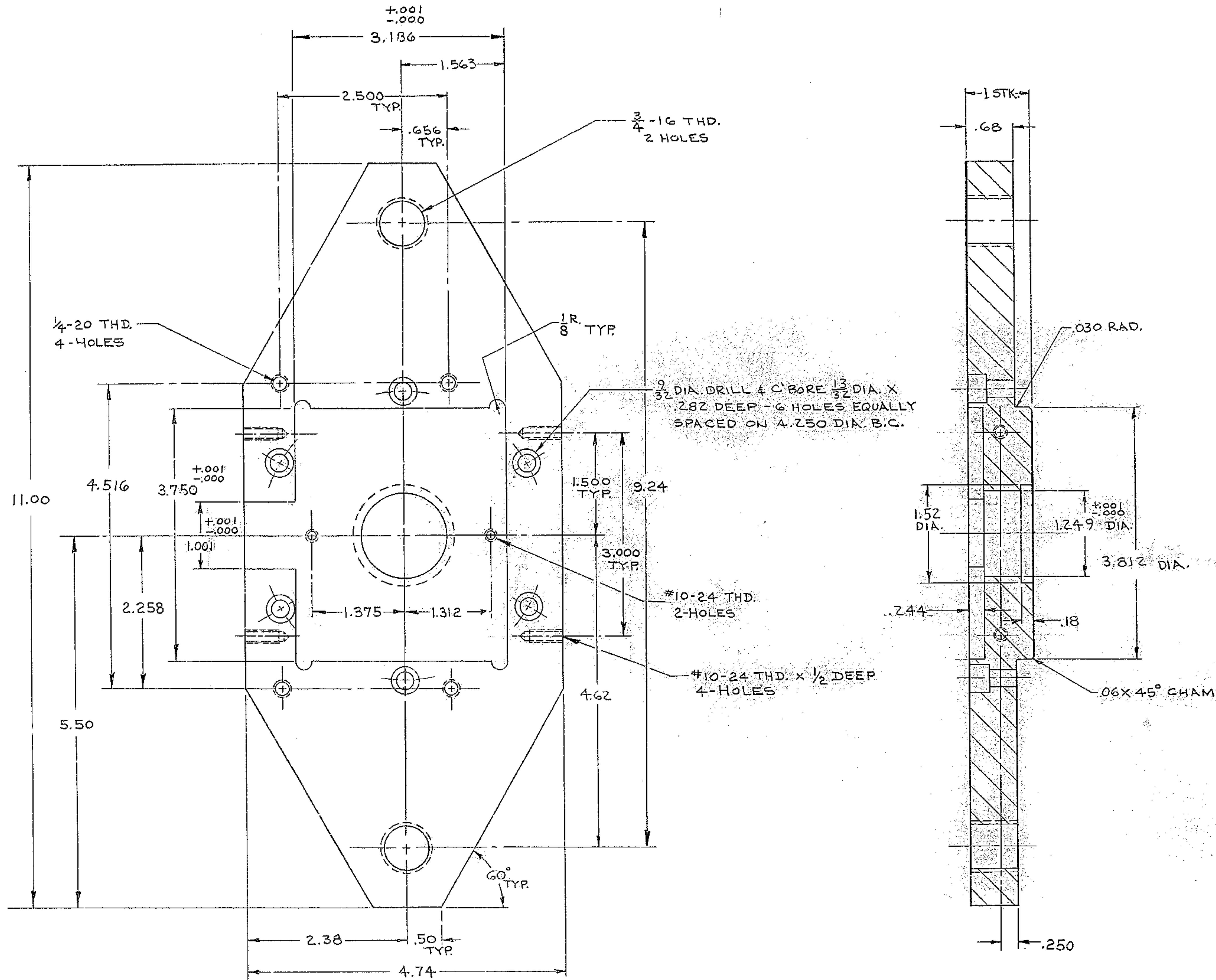


BILL OF MATERIAL

SIZES OF MATERIAL NOTED DO NOT INCLUDE STOCK ALLOWANCE FOR MACHINING AND CUTTING OFF EXCEPT AS NOTED. THE SIZE SPECIFIES THE MATERIAL REQUIRED FOR ONE PIECE ONLY. QUANTITIES NOTED ARE THE TOTAL NUMBER REQUIRED.

ITE/A	DWG. NO.	QTY.	MATERIAL	DESCRIPTION	WEIGHT
-------	----------	------	----------	-------------	--------



MATERIAL: 6061-T6 ALUM. ALLOY
 FINISH: BLACK ANODIZE (DIM TO BE HELD AFTER PLATING)

FOR ASSEMBLY SEE 2150.530E.302

TOLERANCES UNLESS OTHERWISE NOTED		KITT PEAK NATIONAL OBSERVATORY	
DECIMAL DIMENSIONS	00.00 ± .010	OPERATED BY THE ASSOCIATION OF UNIVERSITIES FOR RESEARCH IN ASTRONOMY, INC. UNDER CONTRACT WITH NATIONAL SCIENCE FOUNDATION	
	00.000 ± .005		
FRACTIONAL DIMENSIONS	UP TO 18' ± 1/64		
	18' TO 50' ± 1/32	150 INCH STELLAR TELESCOPE	
	50' & OVER ± 1/16	REF. FILE 1193	
BREAK SHARP EDGES 1/32		NAME TOP PLATE, DRAW TUBE - SECONDARY FLIP LOCK ASSY	
ALL SURFACES TO HAVE 125 FINISH UNLESS OTHERWISE NOTED.		SCALE FULL	
DESIGNED BY	DATE	APPROVED BY	DATE
70 J.	4-11-70	ZAK	4-11-70
DRAWN BY	DATE	APPROVED BY	DATE
W. J. [Signature]	6-3-70	[Signature]	6-3-70
CHECKED BY	DATE	APPROVED BY	DATE
[Signature]	3-24-70	[Signature]	4-13-70
DRAWING NUMBER		REV.	
2150.530D 321		B	

QUANT.	PRINT RECORD	DATE	NO.	REVISION	ECR	DATE	BY