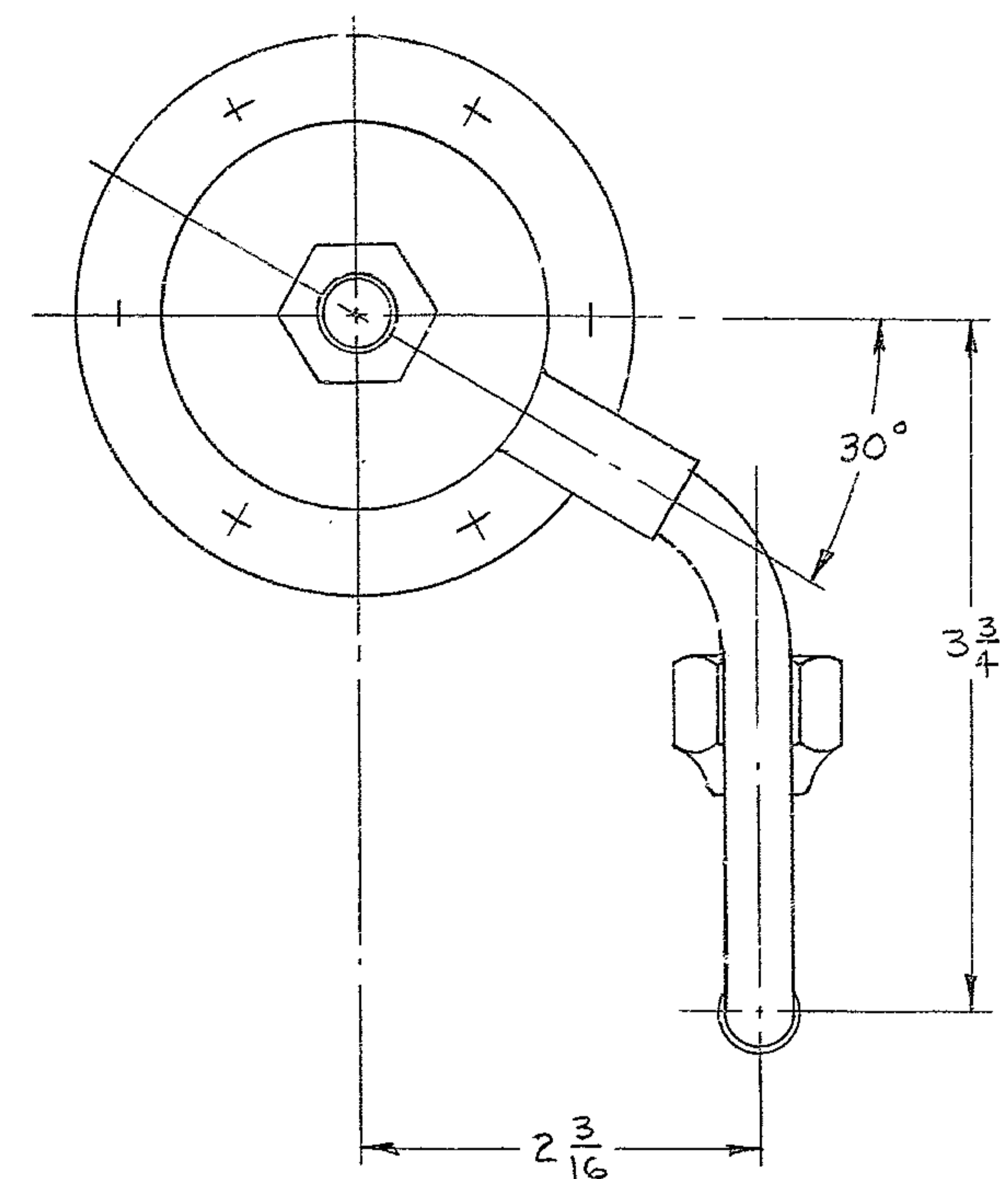
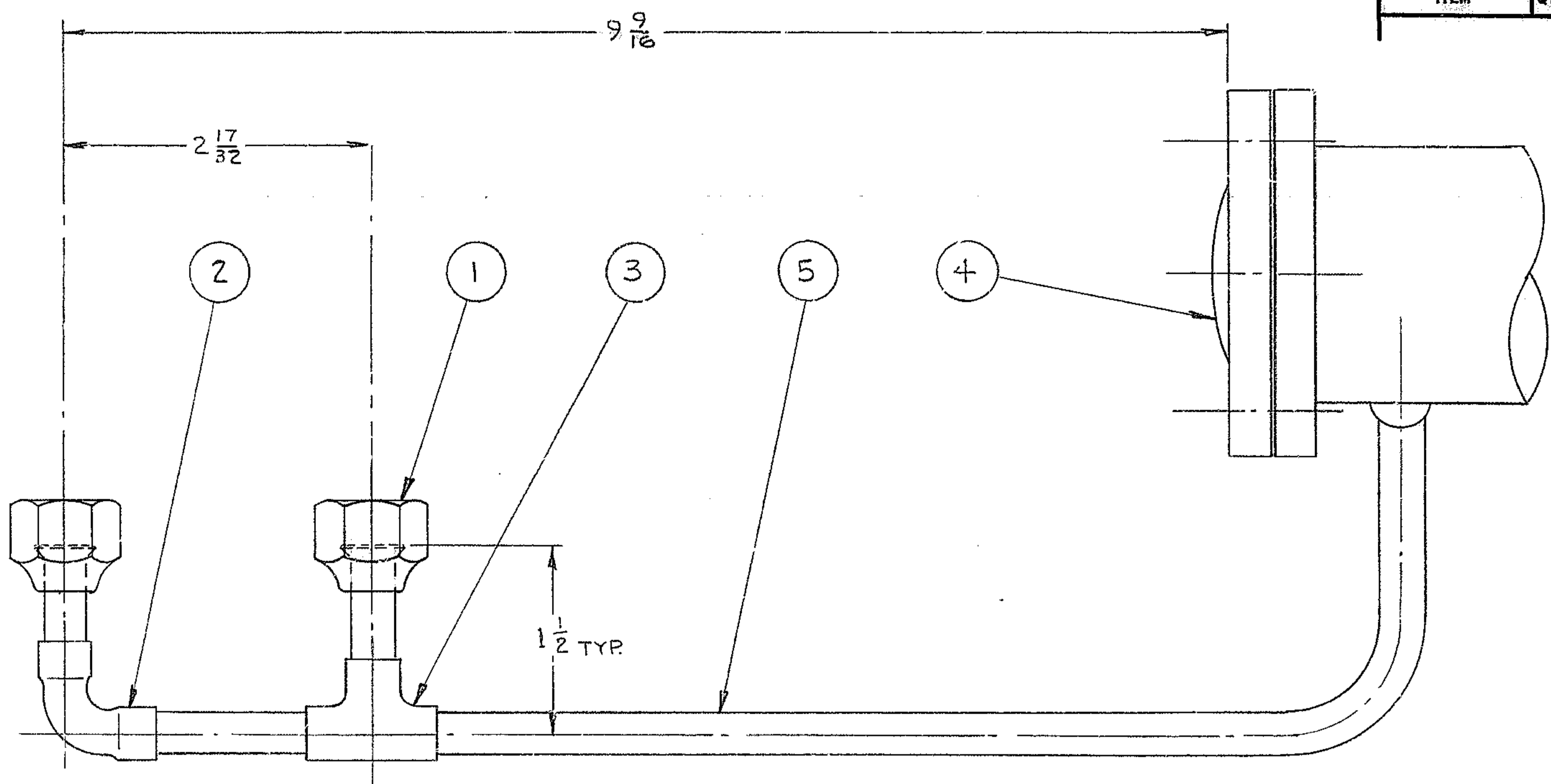


BILL OF MATERIAL

ITEM	QTY.	MATERIAL	DESCRIPTION	WEIGHT
------	------	----------	-------------	--------



7. ITEM 4 MUST BE FILLED WITH COTTON WASTE AT ASSY.
 6. FOR B/M SEE 2150.530-A337
 5. ALL BEND RADII $\frac{15}{16}$
 4. IDENTIFY BY _____ AT LOCATION 4, "AURA INC. MADE IN U.S.A."
 3. STAMP MATCH MARKS ON ALL MATING PARTS WHERE NECESSARY.
 2. PROJECT DRAWINGS _____
 1. FOR NEXT ASSY. SEE 2150.530-E302
- NOTES-

TOLERANCES UNLESS OTHERWISE NOTED				
DECIMAL DIMENSIONS 00.00 ± .010 00.000 ± .003				
FRACTIONAL DIMENSIONS UP TO 18" ± 1/64 18" TO 50" ± 1/32 50" & OVER ± 1/16				
BREAK SHARP EDGES				
ALL SURFACES TO HAVE 125/ FINISH UNLESS OTHERWISE NOTED.				
LET.	REVISION	ECR	DATE	BY

KITT PEAK NATIONAL OBSERVATORY			
OPERATED BY THE ASSOCIATION OF UNIVERSITIES FOR RESEARCH IN ASTRONOMY, INC. UNDER CONTRACT WITH NATIONAL SCIENCE FOUNDATION			
150 INCH STELLAR TELESCOPE			REF. FILE 1193
NAME EXHAUST MANIFOLD - SECONDARY FLIP LOCK ASSY.			SCALE FULL PRINT ISSUED
DESIGNED BY <i>O.B. Henry</i>	DATE 2-5-71	APPROVED BY <i>A.A.A.</i>	DATE 3-11-71
DRAWN BY <i>O.B. Henry</i>	DATE 3-10-71	APPROVED BY	DATE
CHECKED BY <i>John Palm</i>	DATE 4-2-71	APPROVED BY <i>G.W.</i>	DATE 3-11-71
DRAWING NUMBER 2150.530-C337			REV.