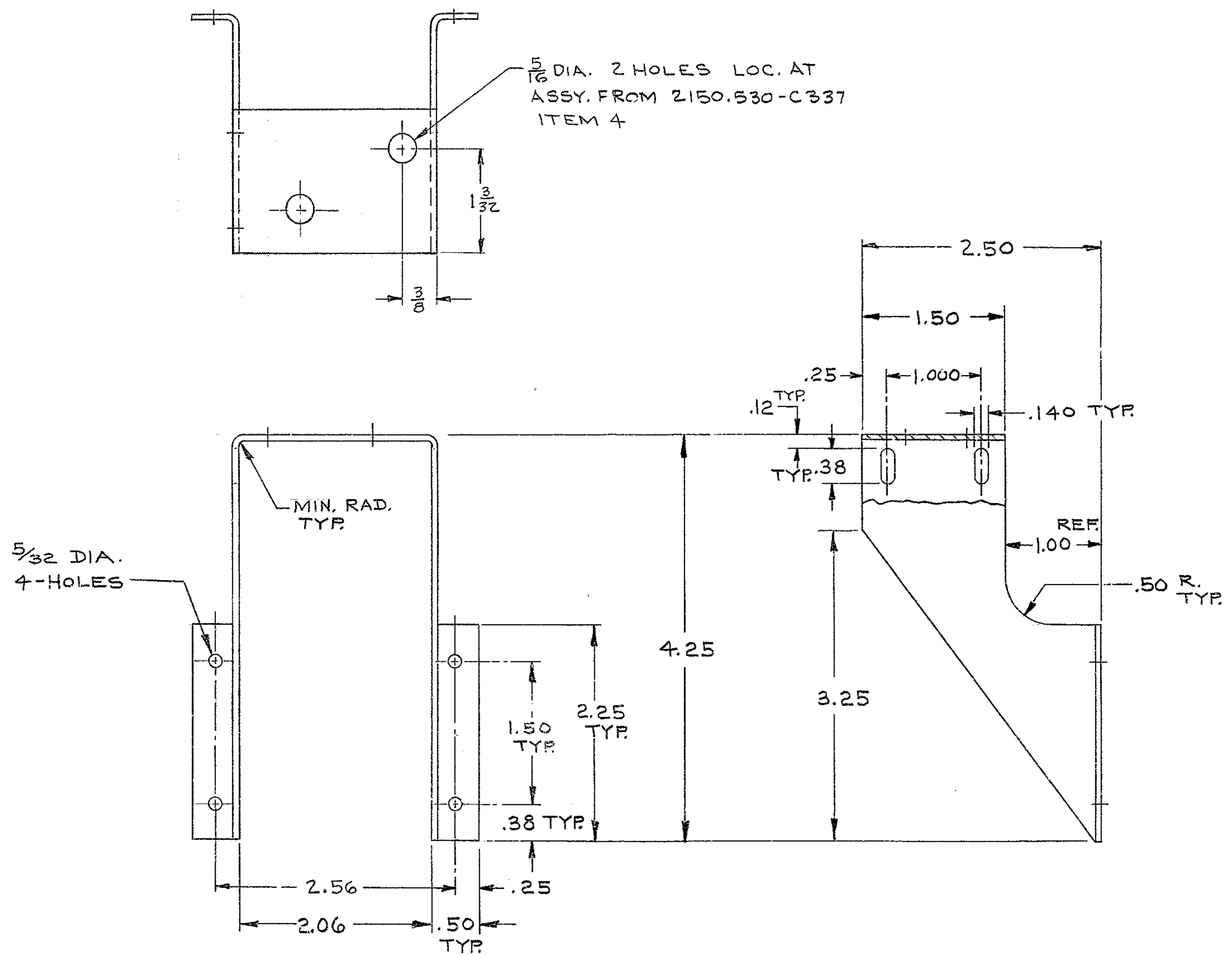


BILL OF MATERIAL

ITEM	QTY.	MATERIAL	DESCRIPTION	WEIGHT
------	------	----------	-------------	--------



MAT'L: 16 GA. STEEL, GALV.

FOR ASSEMBLY SEE 2150.530-E302

				<b>TOLERANCES UNLESS OTHERWISE NOTED</b> DECIMAL DIMENSIONS 00.00 ± .010 00.000 ± .003 FRACTIONAL DIMENSIONS UP TO 18" ± 1/64 18" TO 50" ± 1/32 50" & OVER ± 1/16 BREAK SHARP EDGES .01 ALL SURFACES TO HAVE 125 FINISH UNLESS OTHERWISE NOTED.		<b>KITT PEAK NATIONAL OBSERVATORY</b> OPERATED BY THE ASSOCIATION OF UNIVERSITIES FOR RESEARCH IN ASTRONOMY, INC. UNDER CONTRACT WITH NATIONAL SCIENCE FOUNDATION	
				150 INCH STELLAR TELESCOPE REF. FILE 1193		SCALE FULL PRINT ISSUED	
				NAME <b>LOCKED SWITCH BRACKET</b>		DRAWING NUMBER <b>2150.530-C330</b>	
DESIGNED BY J.B.H.		DATE 2-15-71		APPROVED BY a.d.		DATE 2-7-71	
DRAWN BY D.L.B.		DATE 2-15-71		APPROVED BY		DATE	
CHECKED BY		DATE 4-2-71		APPROVED BY		DATE 3-11-71	
LET.	REVISION	EGR	DATE	BY			