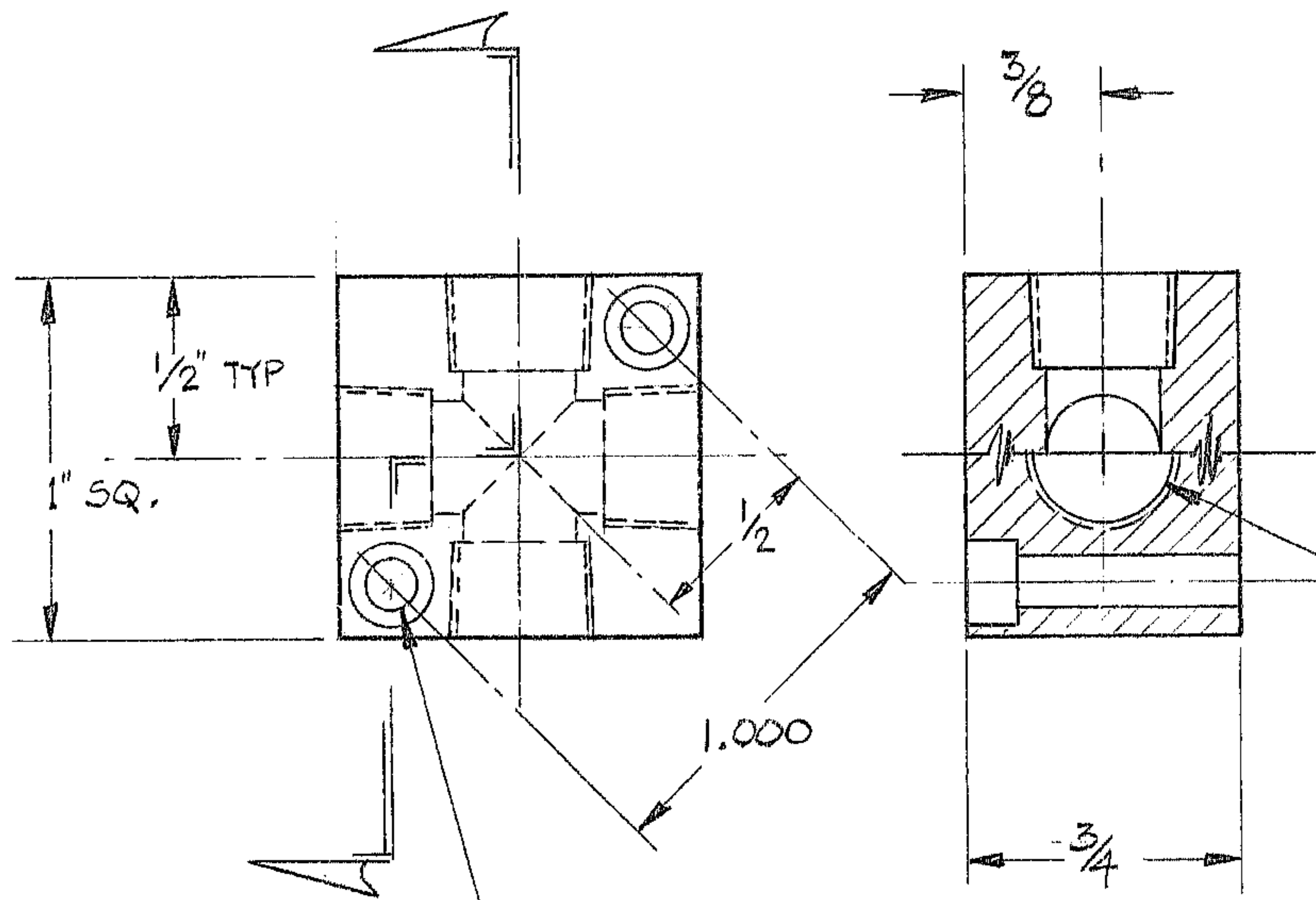


THIS DOCUMENT CONTAINS INFORMATION PROPRIETARY TO WESTERN GEAR CORPORATION. ALL DESIGN, MANUFACTURING, REPRODUCTION, USE, PATENT, AND SALES RIGHTS REGARDING THE SAME ARE HEREBY EXPRESSLY RESERVED BY WESTERN GEAR CORPORATION. THIS DOCUMENT IS SUBMITTED FOR REFERENCE PURPOSES ONLY AND SHALL NOT BE DISCLOSED TO ANY UNAUTHORIZED PERSON OR INCORPORATED INTO ANY OTHER PROJECT.

REVISIONS				
ZONE	LTR	DESCRIPTION	DATE	APPROVED
A		REVISED PER AURA REQ.	2-20-70	W R



"R" DRILL THRU (.359)
TAP 1/8 NPT
4 HOLES

CLR. DRILL & C'BORE
FOR #6 SCREW
2 HOLES

- (1) - 2150.570 E002
- (1) - 2150.580 E002
- (1) - 2150.581 E002
- (1) - 2150.582 E002 (4) TOTAL

NO. REQ. - PER NEXT ASSEM.
MATL - 2024-T3 ALUM
FINISH - BLUE ANODIZE
HT. TRT. -

REF. 1190

LIMITS ON MACHINED DIMENSIONS EXCEPT AS NOTED ANGULAR ± 1/2° LINEAR .X = ± .1 .XX = ± .001 .XXX = ± .001, .003 FRACTIONAL ± 1/32 BREAK ALL SHARP EDGES	150" STELLAR TELESCOPE		WESTERN GEAR CORPORATION HEAVY MACHINERY DIVISION EVERETT, WASHINGTON	
	DRAWN D.N.V.		PIPING MANIFOLD	
CHECK W R 2-10-70		SEC. & PRIME FOCUS ASS'Y		REV A
ENGR [Signature] 2-11-70		SIZE B	CODE IDENT NO. 16603	2150.505B107
APPROVED		SCALE 2X	WT. .07 LB	SHEET OF