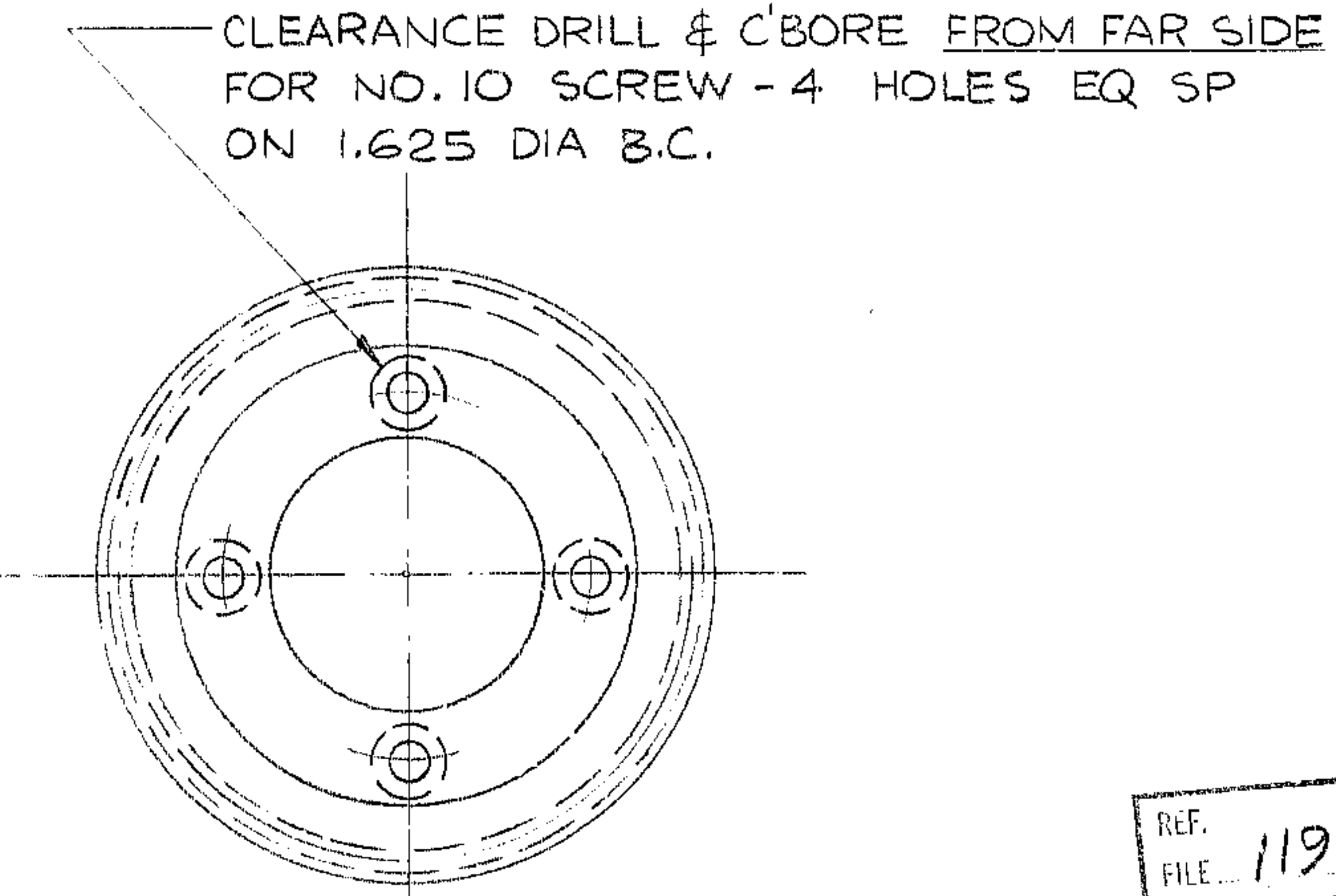
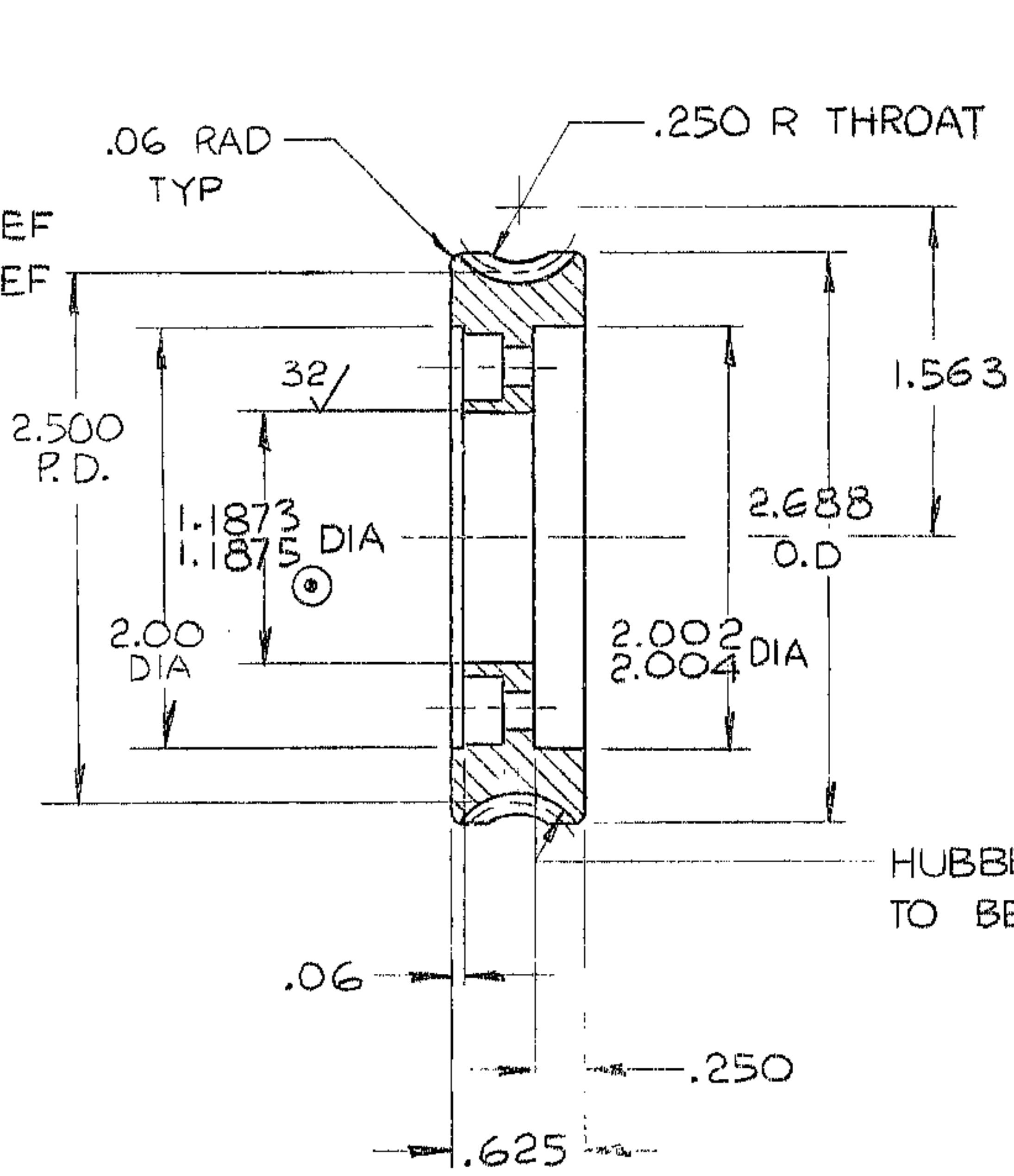


THIS DOCUMENT CONTAINS INFORMATION PROPRIETARY TO WESTERN GEAR CORPORATION. ALL DESIGN, MANUFACTURING, REPRODUCTION, USE, PATENT, AND SALES RIGHTS REGARDING THE SAME ARE HEREBY EXPRESSLY RESERVED BY WESTERN GEAR CORPORATION. THIS DOCUMENT IS SUBMITTED FOR REFERENCE PURPOSES ONLY AND SHALL NOT BE DISCLOSED TO ANY UNAUTHORIZED PERSON OR INCORPORATED INTO ANY OTHER PROJECT.

REVISIONS				
ZONE	LTR	DESCRIPTION	DATE	APPROVED
	A	REVISED/AURA REQ	2-19-70	W.R.

WORM GEAR DATA	
NO. OF TEETH	40
DIAMETRAL PITCH	16
THRD.	1 R.H.
PRESSURE ANGLE	14 1/2°
AGMA QUALITY (PRECISION 2)	#12
HELIX ANGLE	5°43' REF
WORM P.D.	.625 REF
CENTER DISTANCE WITH WORM :	1.563 1.564



REF. FILE 1190

NO. REQ. — PER NEXT ASSEM.
 MAT'L. — ALUM BRONZE
 FINISH — AMPCO #15 OR EQUAL
 HT-TRT. — 50000 PSI MIN YIELD
 (6) TOTAL

- NOTE:
1. MAKE ARBOR WITH FLANGE FOR HUBBING.
 2. ALL MACHINED SURFACES TO BE 63/ OR BETTER, UNLESS OTHERWISE SPECIFIED.
 3. DIA'S MARKED ⊙, TO BE CONCENTRIC TO P.D. WITHIN .0003 T.I.R.

LIMITS ON MACHINED DIMENSIONS EXCEPT AS NOTED ANGULAR ± 1/2° LINEAR X = ± .1 XX = ± .0010 XXX = ± .0001003 FRACTIONAL ± 1/32 BREAK ALL SHARP EDGES .01 x 45°	150 INCH STELLAR TELESCOPE	Western GEAR CORPORATION HEAVY MACHINERY DIVISION EVERETT, WASHINGTON	
	DRAWN MMS CHECK WR 2-12-70 ENGR R 2-20-70	WORM GEAR SEC. & PRIME FOCUS ASS'Y	
APPROVED	SIZE B	CODE IDENT NO. 16603	REV A
	SCALE FULL	WT. .61 LB	SHEET 1 OF 1