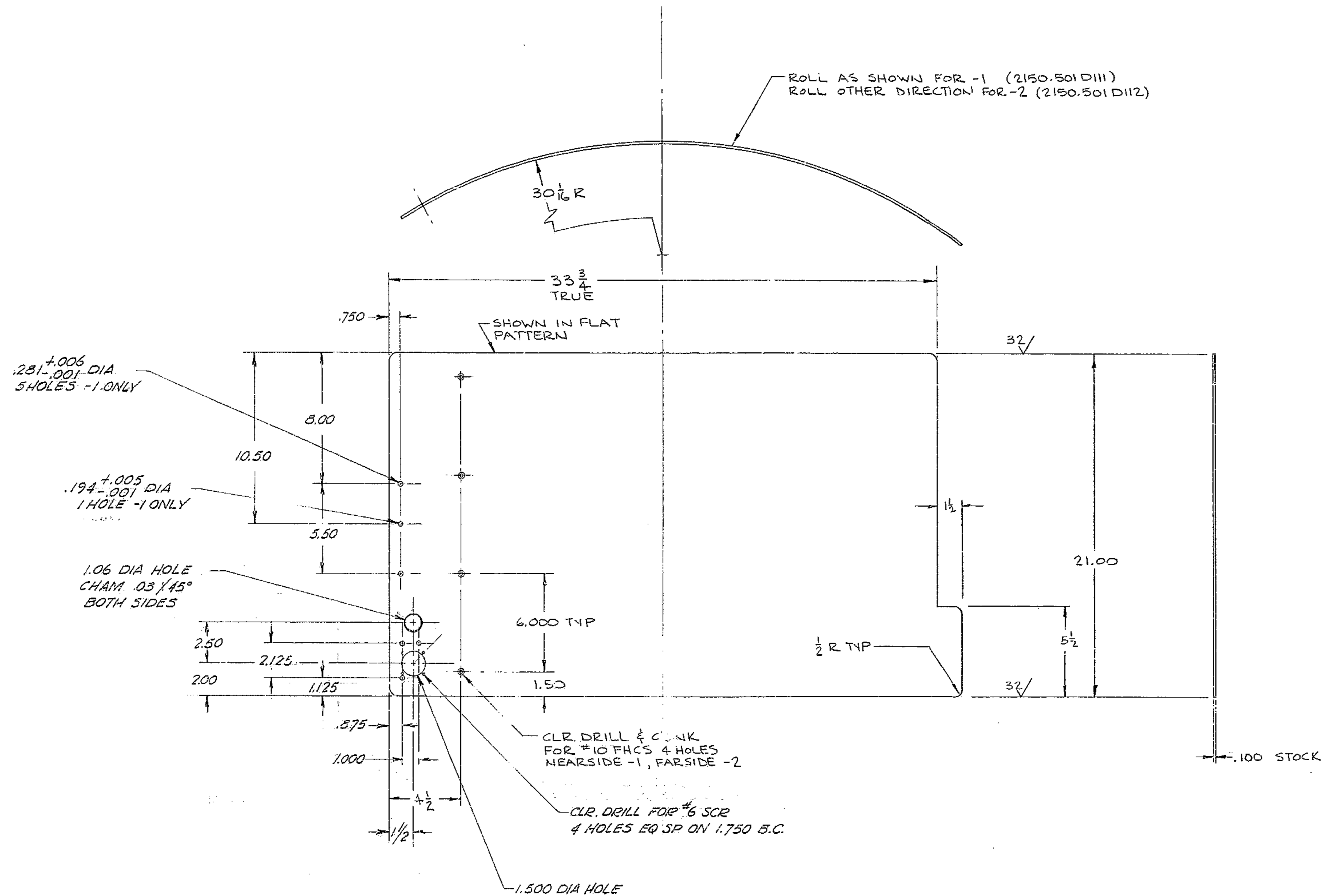


THIS DOCUMENT CONTAINS INFORMATION PROPRIETARY TO WESTERN GEAR CORPORATION. ALL DESIGN, MANUFACTURING, REPRODUCTION, USE, PATENT, AND SALES RIGHTS REGARDING THE SAME ARE HEREBY EXPRESSLY RESERVED BY WESTERN GEAR CORPORATION. THIS DOCUMENT IS SUBMITTED FOR REFERENCE PURPOSES ONLY AND SHALL NOT BE DISCLOSED TO ANY UNAUTHORIZED PERSON OR INCORPORATED INTO ANY OTHER PROJECT.

REVISIONS				
ZONE	LTR	DESCRIPTION	DATE	APPROVED
	A	REVISED PER AURA REQ	2-20-70	WJR
6B	B	ADDED 5-.281 DIA HOLES @ 1-.194	5/9	
6C		DIA HOLE ECR 1433	5-29-75	



FIND NO.	PART NO.	DESCRIPTION	QTY	MATERIAL	CODE IDENT
LIST OF MATERIAL (LM)					
LIMITS ON MACHINED DIMENSIONS EXCEPT AS NOTED		150" STELLAR TELESCOPE		HEAVY MACHINERY DIVISION EVERETT, WASHINGTON	
ANGULAR = ± 1/2°		DRAWN C. JACKSON 4-17-69		PRIME FOCUS ACCESS DOOR SEC. MIRROR & PRIME FOCUS ASS'Y	
LINEAR: X = ± .1 XXX = ± .003		CHECK WJR 4-2-70			
.XX = ± .001 FRACTIONAL = ± 1/32		ENGR [Signature] 7/1/70			
BREAK ALL SHARP EDGES					
MATERIAL					
.100 THK 2024-T3 ALUM ALLOY					
FIN. BLK ANODIZE					
2150.501D111 (1) REQ'D					
2150.501D112 (1) REQ'D					
APPROVED		SIZE CODE IDENT NO.		REV	
		D 16603 2150.501D 111 (-) 112 (+) 8			
SCALE 1/4		WT 7.0		LB SHEET 1 OF 1	

N/A - 2150.501E002