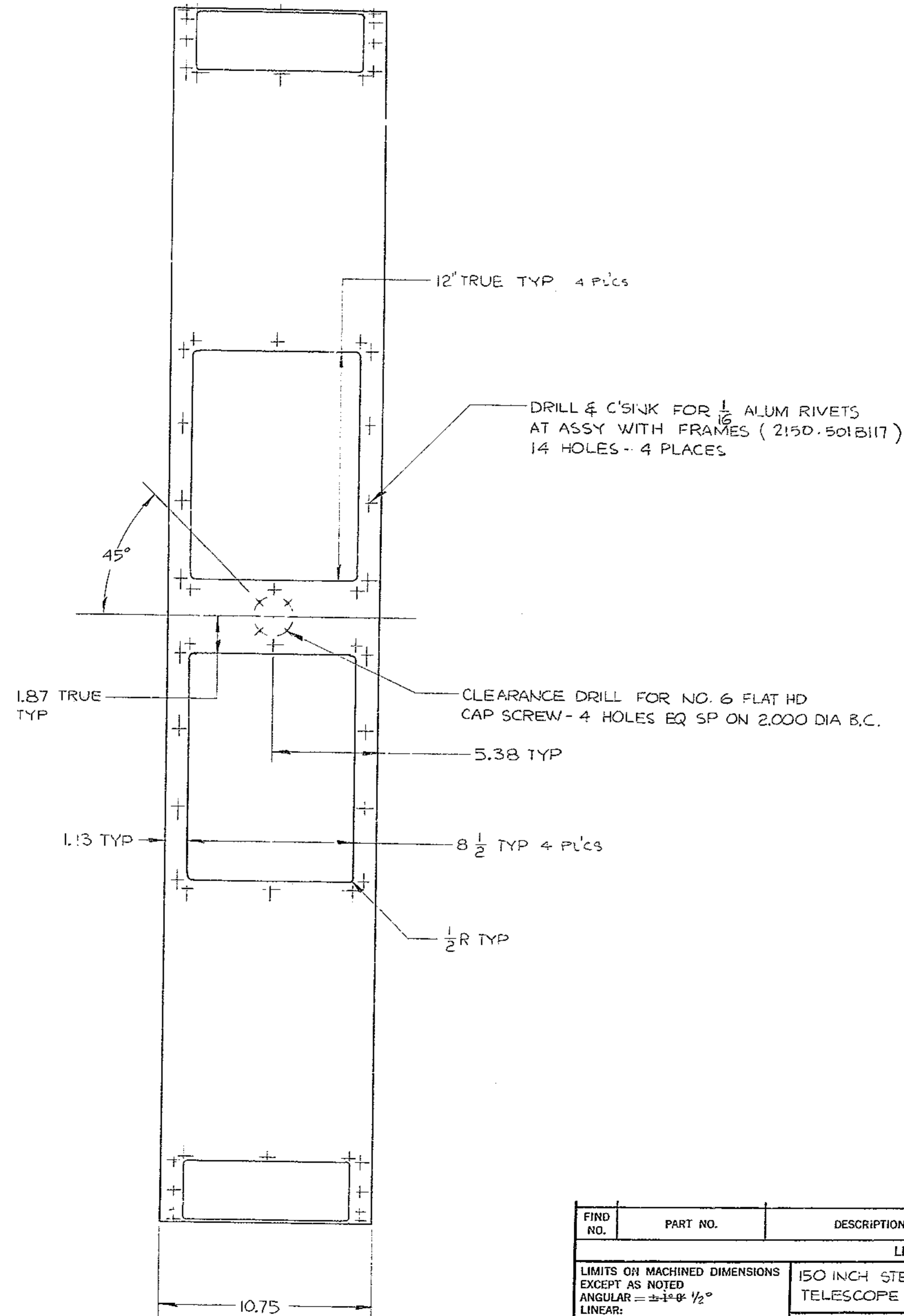
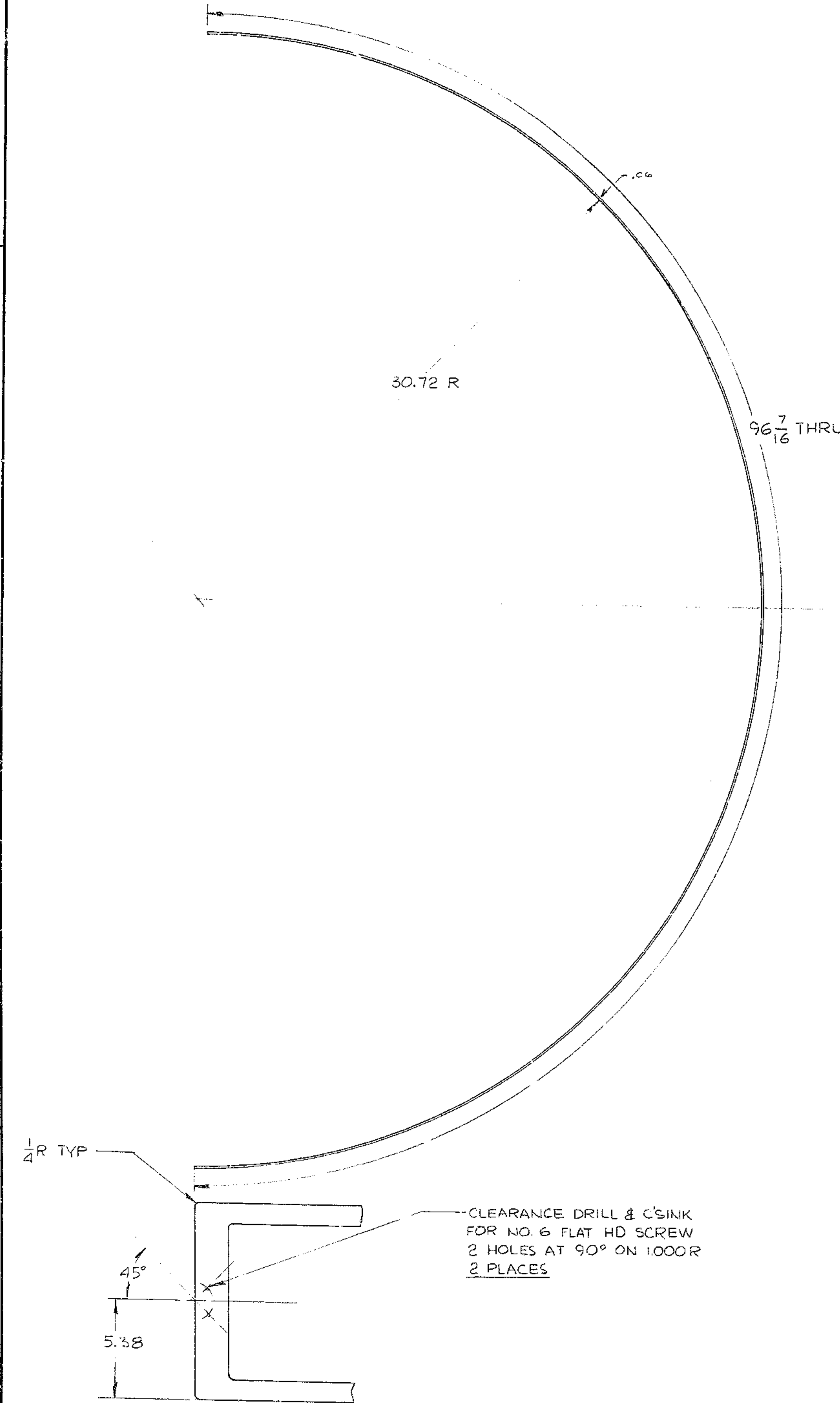


THIS DOCUMENT CONTAINS INFORMATION PROPRIETARY TO WESTERN GEAR CORPORATION. ALL DESIGN, MANUFACTURING, REPRODUCTION, USE, PATENT, AND SALES RIGHTS REGARDING THE SAME ARE HEREBY EXPRESSLY RESERVED BY WESTERN GEAR CORPORATION. THIS DOCUMENT IS SUBMITTED FOR REFERENCE PURPOSES ONLY AND SHALL NOT BE DISCLOSED TO ANY UNAUTHORIZED PERSON OR INCORPORATED IN ANY OTHER PROJECT.

REVISIONS				
ZONE	LTR	DESCRIPTION	DATE	APPROVED
A		REVISED PER AURA REQ	3-30-70	WR



N/A-2150.501E.002

FIND NO.	PART NO.	DESCRIPTION	QTY	MATERIAL	CODE IDENT
LIST OF MATERIAL (LM)					
LIMITS ON MACHINED DIMENSIONS EXCEPT AS NOTED		150 INCH STELLAR TELESCOPE		WESTERN GEAR CORPORATION HEAVY MACHINERY DIVISION EVERETT, WASHINGTON	
ANGULAR = ± 1/8° - 1/2°		DRAWN WMS 4-18-69		WINDOW SLIDE RING SEC. MIRROR & PRIME FOCUS ASSY	
LINEAR: X = ± .1 XXX = ± .010 .003		CHECK W 2 4-2-70			
XX = ± .03-01 FRACTIONAL = ± 1/32		ENGR @ 4/10/70		MATERIAL 2024-T4 ALUM .06	
BREAK ALL SHARP EDGES		APPROVED			
FINISH: BLACK ANODIZE		SCALE 1/4		CODE IDENT NO. D 16603	REV A
REQD: 2 / N.A.		WT 3.5		2150.501D110	
		LB SHEET 1 OF 1		D-31297	

BOLLER & CHIVENS DATA:
NEXT ASSY: E-30228, JOB NO: 58070