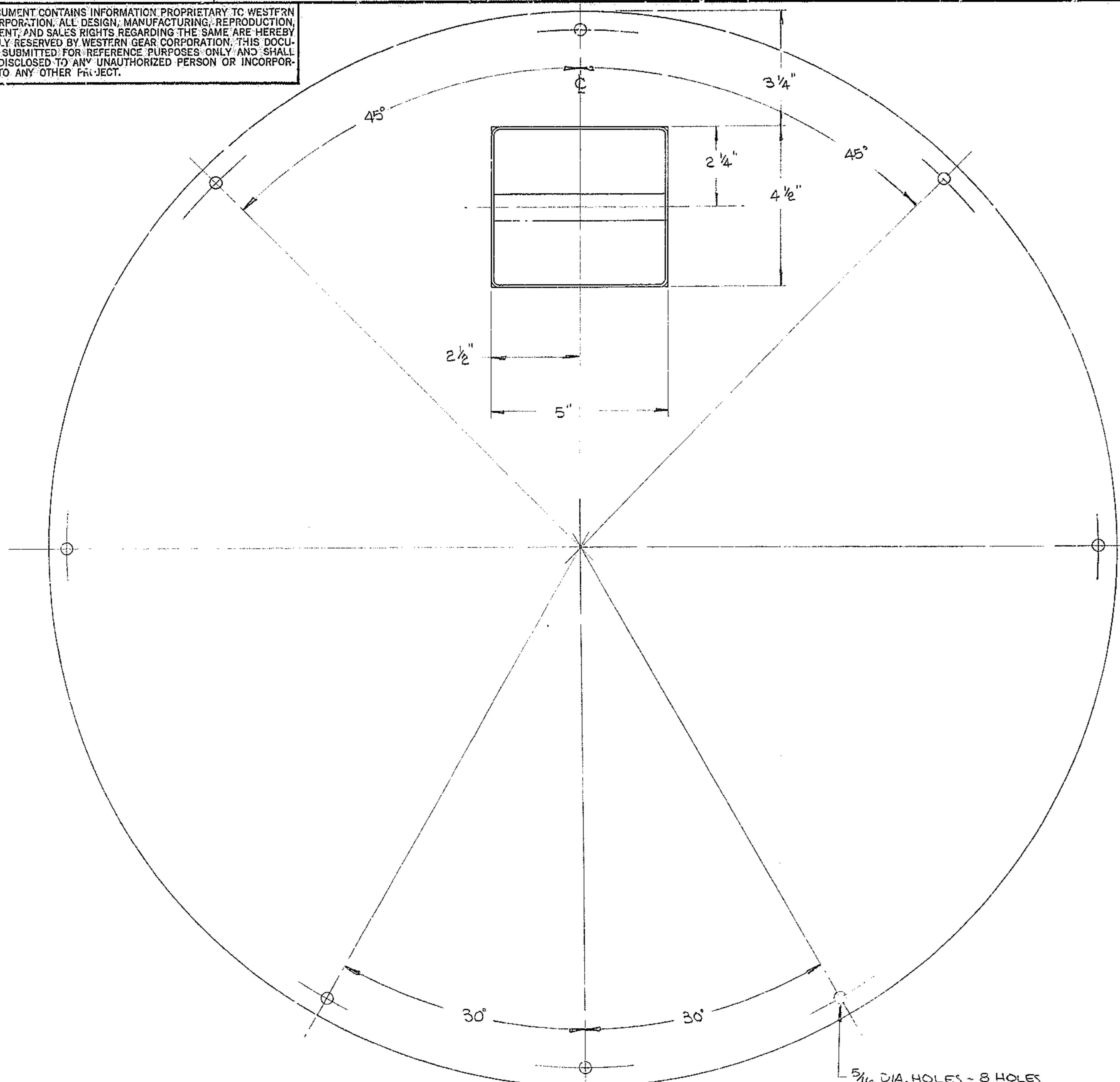
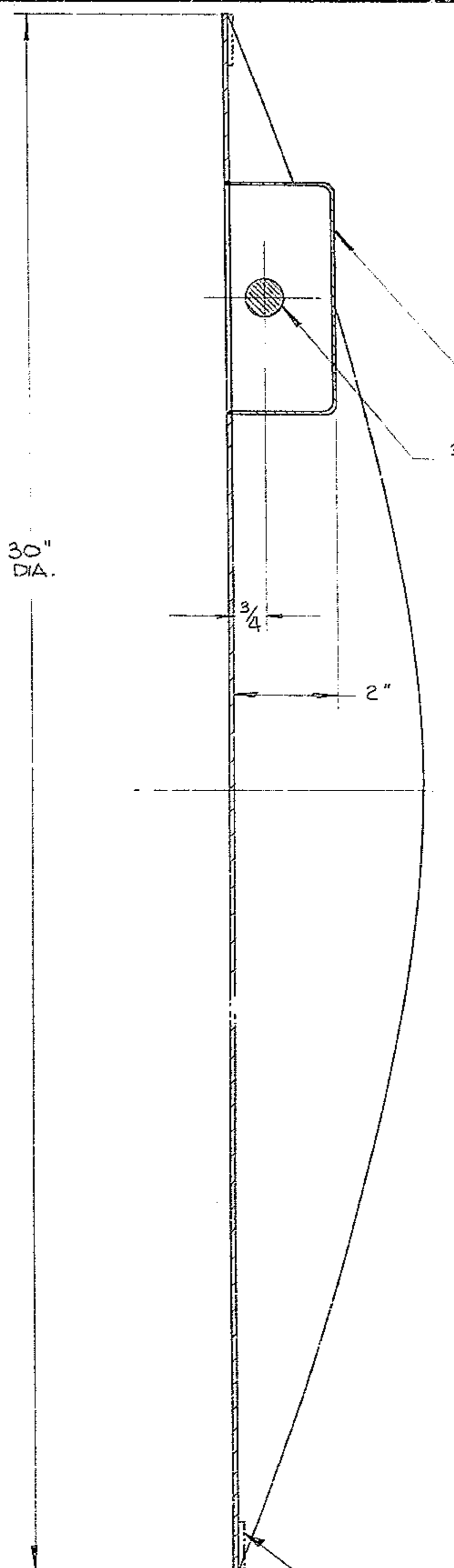


THIS DOCUMENT CONTAINS INFORMATION PROPRIETARY TO WESTERN GEAR CORPORATION. ALL DESIGN, MANUFACTURING, REPRODUCTION, USE, PATENT, AND SALES RIGHTS REGARDING THE SAME ARE HEREBY EXPRESSLY RESERVED BY WESTERN GEAR CORPORATION. THIS DOCUMENT IS SUBMITTED FOR REFERENCE PURPOSES ONLY AND SHALL NOT BE DISCLOSED TO ANY UNAUTHORIZED PERSON OR INCORPORATED INTO ANY OTHER PROJECT.

REVISIONS				
ZONE	LTR	DESCRIPTION	DATE	APPROVED
	A	REVISED PER AURA REQ.	5-30-70	W.R.



5/16 DIA. HOLES - 8 HOLES  
 C/W 29" B.C. TRANSFER  
 FROM TEMPLATE USED ON 2150.501E106  
 FOR ITEMS B1, B2 PER 2150.501E002 (#5 OVAL HD. #5-0-360  
 SOUTHCO FASTENER) REF.



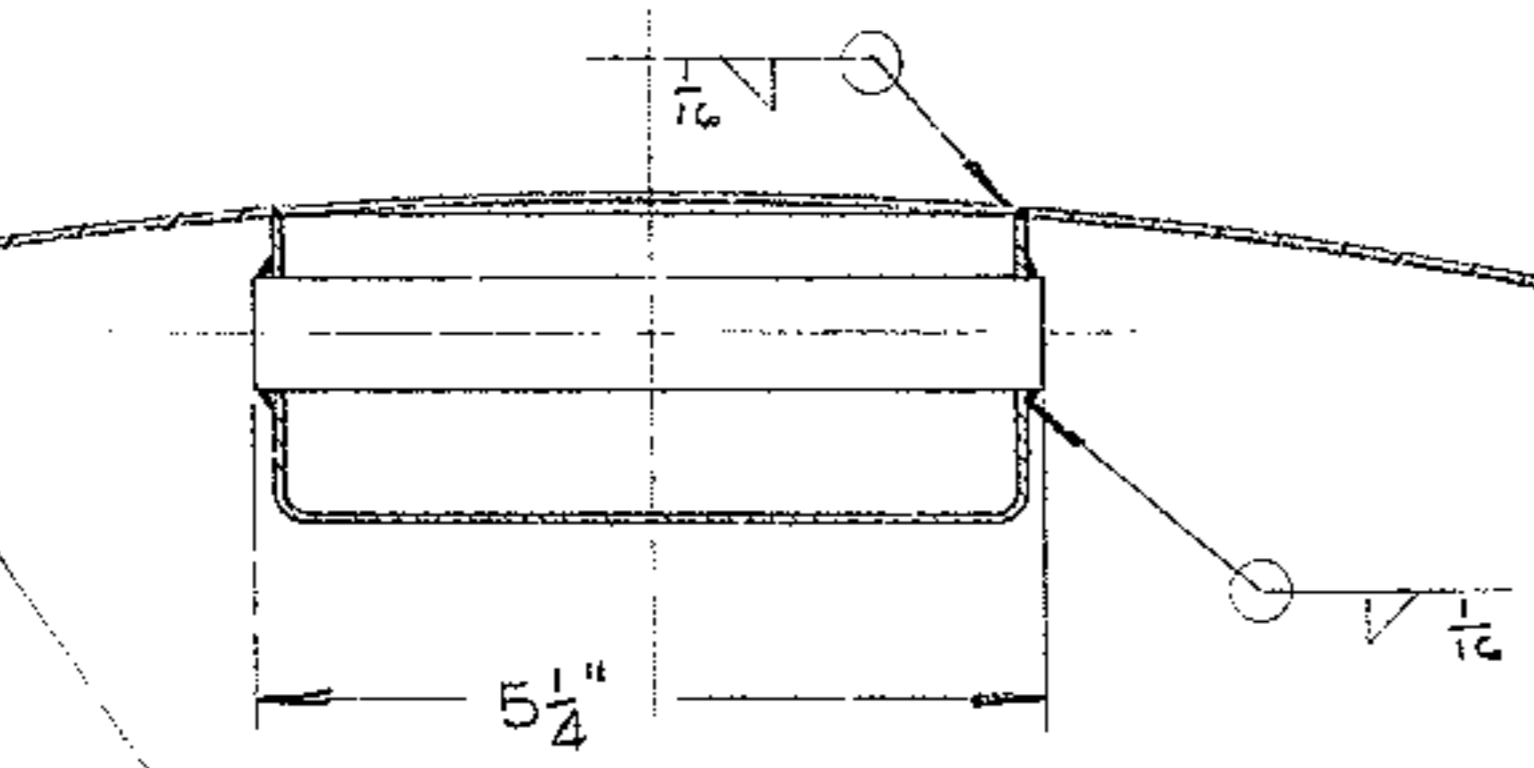
Z 72-30 ZERO CONTAINER  
 ITEM # 69 PER N/A-2150.501E002  
 3/4 DIA. 6061-T6 ALUM

NOTE:  
 FABRICATE & LOCATE HOLES WITH FLAT THEN  
 ROLL TO RAD. SHOWN & WELD IN HANDLE POCKET.

1/8" SPONGE VINYL 1" WIDE ALL AROUND  
 CEMENT @ ASSY ITEM 80 PER N/A  
 .100 STOCK  
 6061-T6 ALUM

1190

NO. REQ. - 2 PER NEXT ASSEM.  
 MATL. - NOTED  
 FINISH - BLK ANODIZE  
 HT. TRT. -



31" RADIUS

FIND NO.	PART NO.	DESCRIPTION	QTY	MATERIAL	CODE IDENT
LIST OF MATERIAL (LM)					
LIMITS ON MACHINED DIMENSIONS EXCEPT AS NOTED ANGULAR = ± 1/2°		150" STELLAR TELESCOPE		<b>western</b> HEAVY MACHINERY DIVISION EVERETT, WASHINGTON	
LINEAR: X = ± .1    XXX = ± .010-0.03 XX = ± .001 FRACTIONAL = ± 1/32		DRAWN R. CHAVEZ	4-11-69	N/A-2150.501E002 SEC. MIRROR & PRIME FOCUS ASSY	
BREAK ALL SHARP EDGES		CHECK W.F.	4-2-70		
MATERIAL		ENGR	W.R.		
APPROVED		SIZE	CODE IDENT NO.	REV	
		D	16603	2150.501D109	A
		SCALE 1/2x	WT 7.1	LB	SHEET 1 OF 1

N/A-2150.501E002