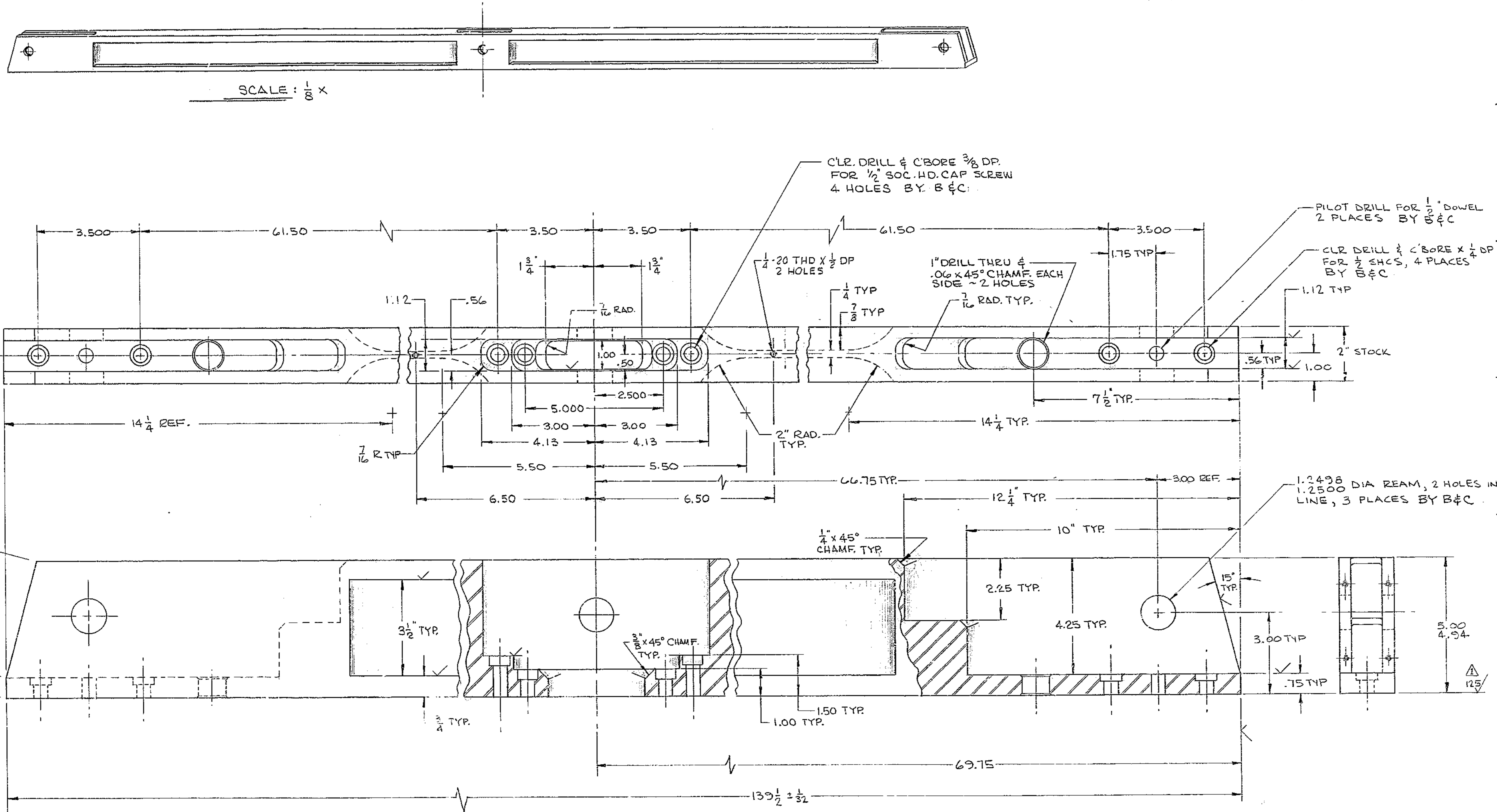


BILL OF MATERIAL				SIZES OF MATERIAL NOTED DO NOT INCLUDE ALLOWANCE FOR MACHINING AND CUTTING OFF EXCEPT AS NOTED. THE SIZE SPECIFIES THE MATERIAL REQUIRED FOR ONE PIECE ONLY. QUANTITIES NOTED ARE THE TOTAL NUMBER REQUIRED.	
ITEM	DWG. NO.	QTY.	MATERIAL	DESCRIPTION	WEIGHT
1		4	C-1018 CF STEEL AISI SPEC. BAR	2 X 5 BAR X 139 1/2 LG SELECT FOR STRAIGHTNESS (.02 MAX. IN LENGTH)	159.3



- NOTES:
1. FINISH ONLY IF REQ'D
 2. $\sqrt{250}$ MACHINE FINISH
 3. SANDBLAST AFTER MACHINING
 4. STRAIGHTEN TO .03 IN LENGTH BOTH AXIS
 5. PRIME AND PAINT ALL OVER
 6. LAYOUT AND DRILL ALL HOLES
 7. FIT UP WITH MATING PARTS - MATCH MARK AND REAM FOR DOWELS
 8. DEGREASE - MASK MATING SURFACES & PAINT
- BY B&C

FOR ASSEMBLY SEE 2150.501E002

TOLERANCES UNLESS OTHERWISE NOTED		KITT PEAK NATIONAL OBSERVATORY OPERATED BY THE ASSOCIATION OF UNIVERSITIES FOR RESEARCH IN ASTRONOMY, INC. UNDER CONTRACT WITH NATIONAL SCIENCE FOUNDATION			
DECIMAL DIMENSIONS 00.00 ± .010 00.000 ± .003					
FRACTIONAL DIMENSIONS UP TO 18" ± 1/64 18" TO 30" ± 1/32 30" & OVER ± 1/16					
BREAK SHARP EDGES .02		150 INCH STELLAR TELESCOPE NAME: MOUNT STRUT SEC. MIRROR & PRIME FOCUS ASSY			
ALL SURFACES TO HAVE 250 FINISH UNLESS OTHERWISE NOTED.		SCALE 1/2" = 1" NOTED PRINT ISSUED			
DESIGNED BY	DATE	APPROVED BY	DATE	DRAWING NUMBER	REV.
UJ TC	1-7-69	[Signature]	1-12-70	2150.501-D107	C
DRAWN BY	DATE	APPROVED BY	DATE		
C. AAZ & SON	1-7-69				
CHECKED BY	DATE	APPROVED BY	DATE		
UJ TC	1-12-70				

QUANT.	PRINT RECORD	DATE	NO.	REVISION	DATE	BY