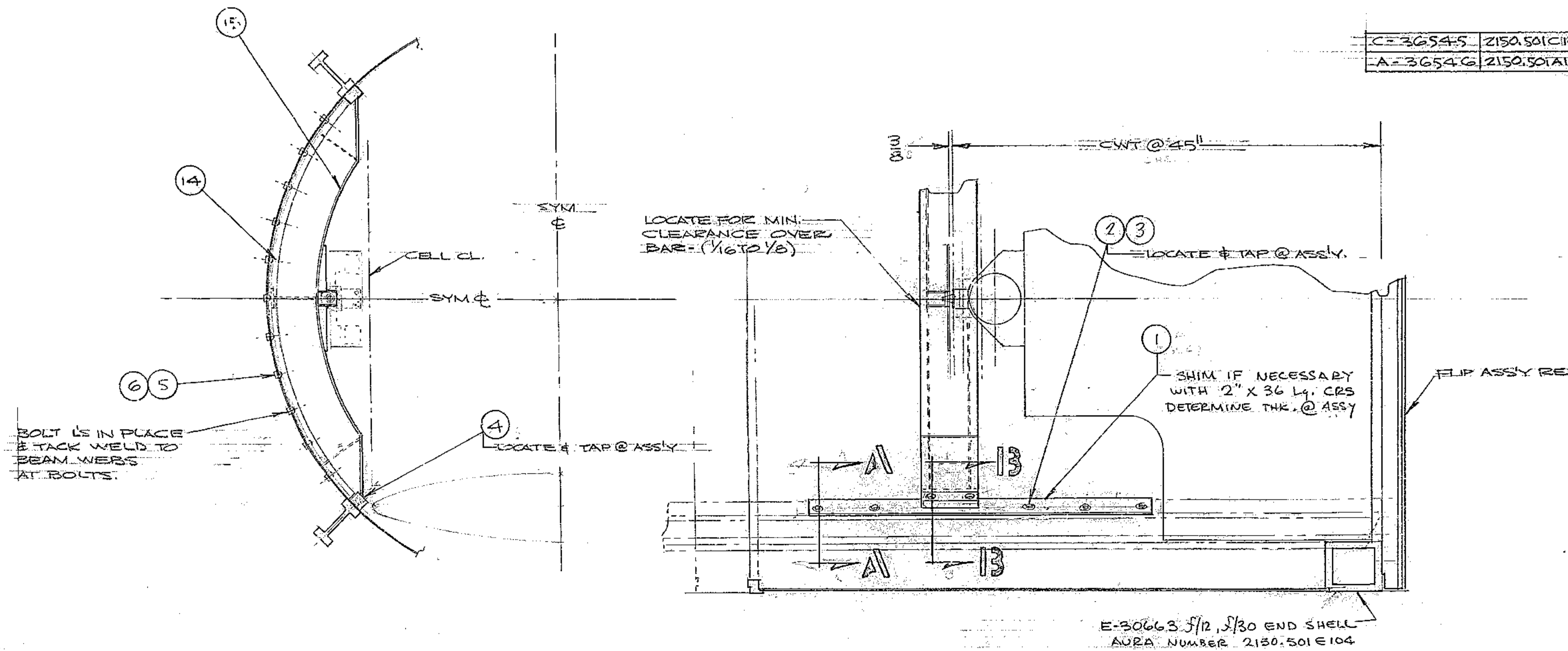
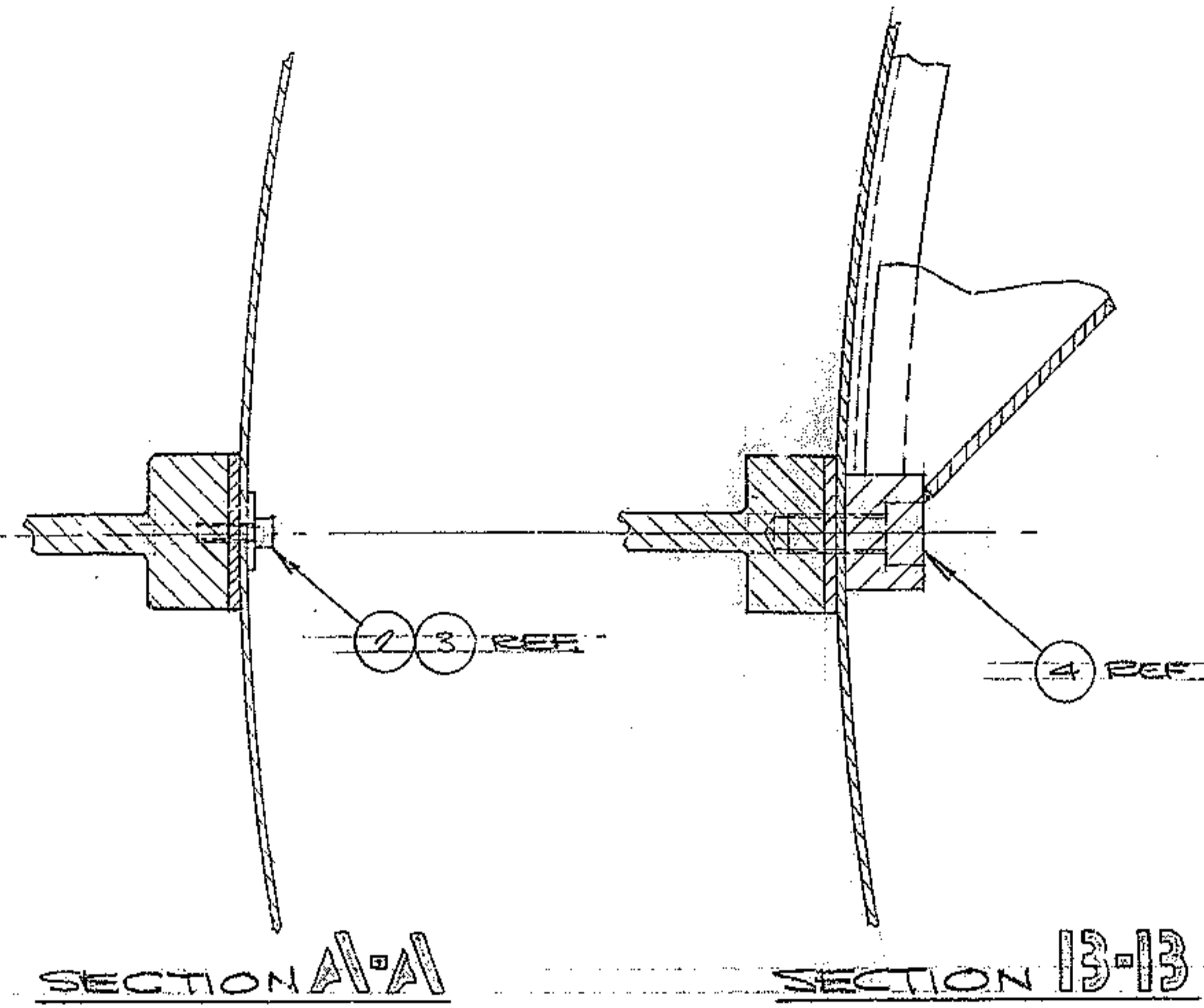


THIS DOCUMENT CONTAINS INFORMATION PROPRIETARY TO WESTERN GEAR CORPORATION. ALL DESIGN, MANUFACTURING, REPRODUCTION, USE, PATENT AND SALES RIGHTS REGARDING THE SAME ARE HEREBY EXPRESSLY RESERVED BY WESTERN GEAR CORPORATION. THIS DOCUMENT IS SUBMITTED FOR REFERENCE PURPOSES ONLY AND SHALL NOT BE DISCLOSED TO ANY UNAUTHORIZED PERSON OR INCORPORATED INTO ANY OTHER PROJECT.

REVISIONS				
ZONE	LTR	DESCRIPTION	DATE	APPROVED
	A	CORRECTED PER AURA REC	12-27-75	RC



ITEM	DESCRIPTION	QTY	MATERIAL
15	BEAM WELDMENT FLIP STIFFENER	2	
14	ANGLE-FLANGE LATERAL STIFFENER	4	
13			
12			
11			
10			
9			
8			
7			
6	#10-32 NUT	44	
5	#10-32 x 1/2 LG. BUTTON HD. SCREW	44	
4	1/2-13 x 1 1/4 LG. SOC. HD. CAP SCREW	8	
3	1/4 HD. x 1 1/2 D. WASHER	20	
2	1/4-20 x 5/8 LG. SOC. HD. CAP SCREW	20	
1	2" x 36" LG. SHIM	4	CRS

N/A - 2150.501E002 2 REQ

REF. 1190

FIND NO.	PART NO.	DESCRIPTION	QTY	MATERIAL	CODE IDENT
LIST OF MATERIAL (LM)					
LIMITS ON MACHINED DIMENSIONS EXCEPT AS NOTED		150 STELLAR TELESCOPE			
ANGULAR = ± 1/2°		DRAWN WJZ			
LINEAR:		CHECK			
X = ± .1 XXX = ± .001		ENGR			
XX = ± .01 FRACTIONAL = ± 1/32					
BREAK ALL SHARP EDGES					
MATERIAL					
APPROVED					
SIZE	CODE IDENT NO.	REV			
D	16603	2150.501D 102		A	
SCALE	WT	LB		SHEET 1 OF 1	