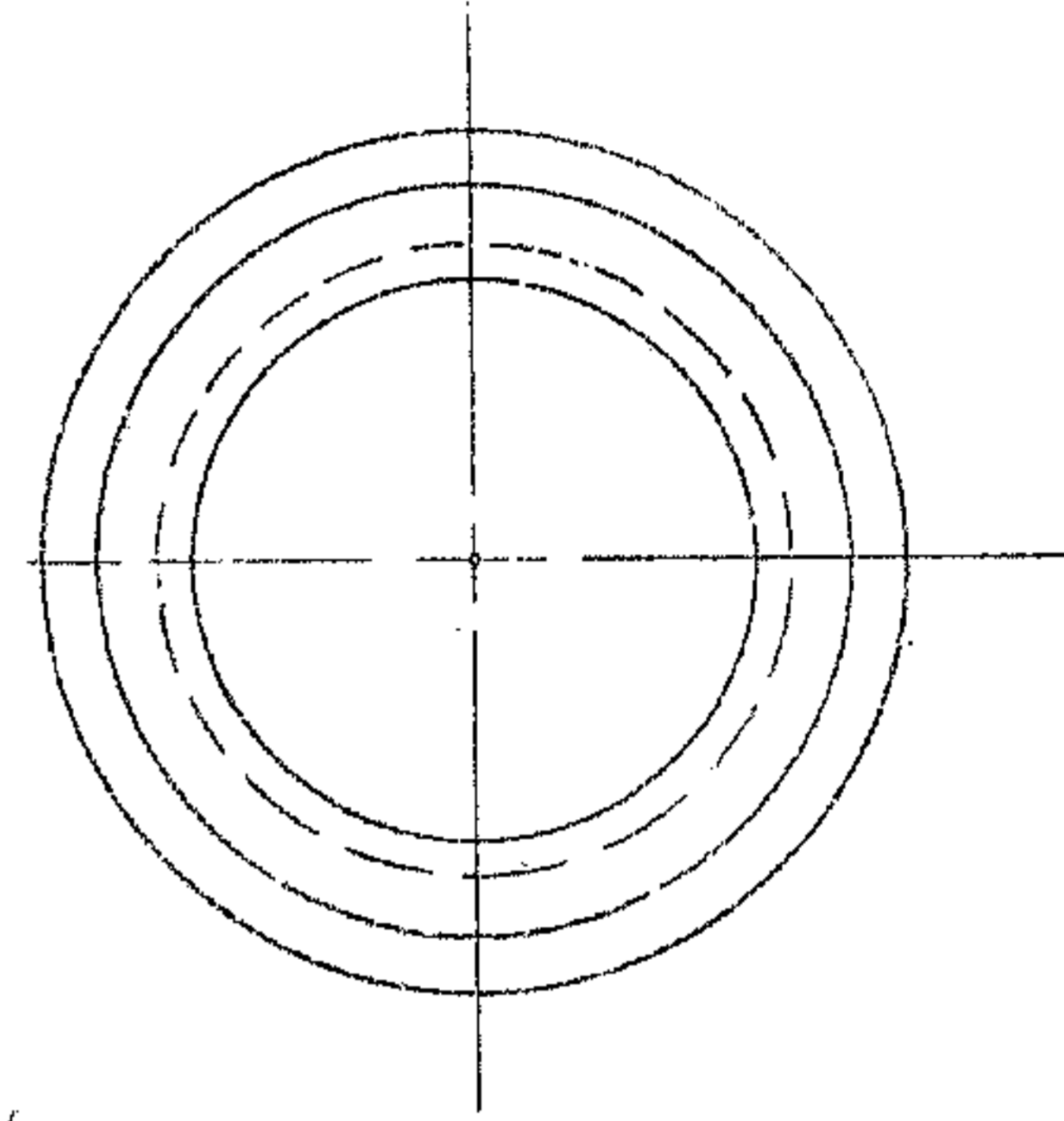
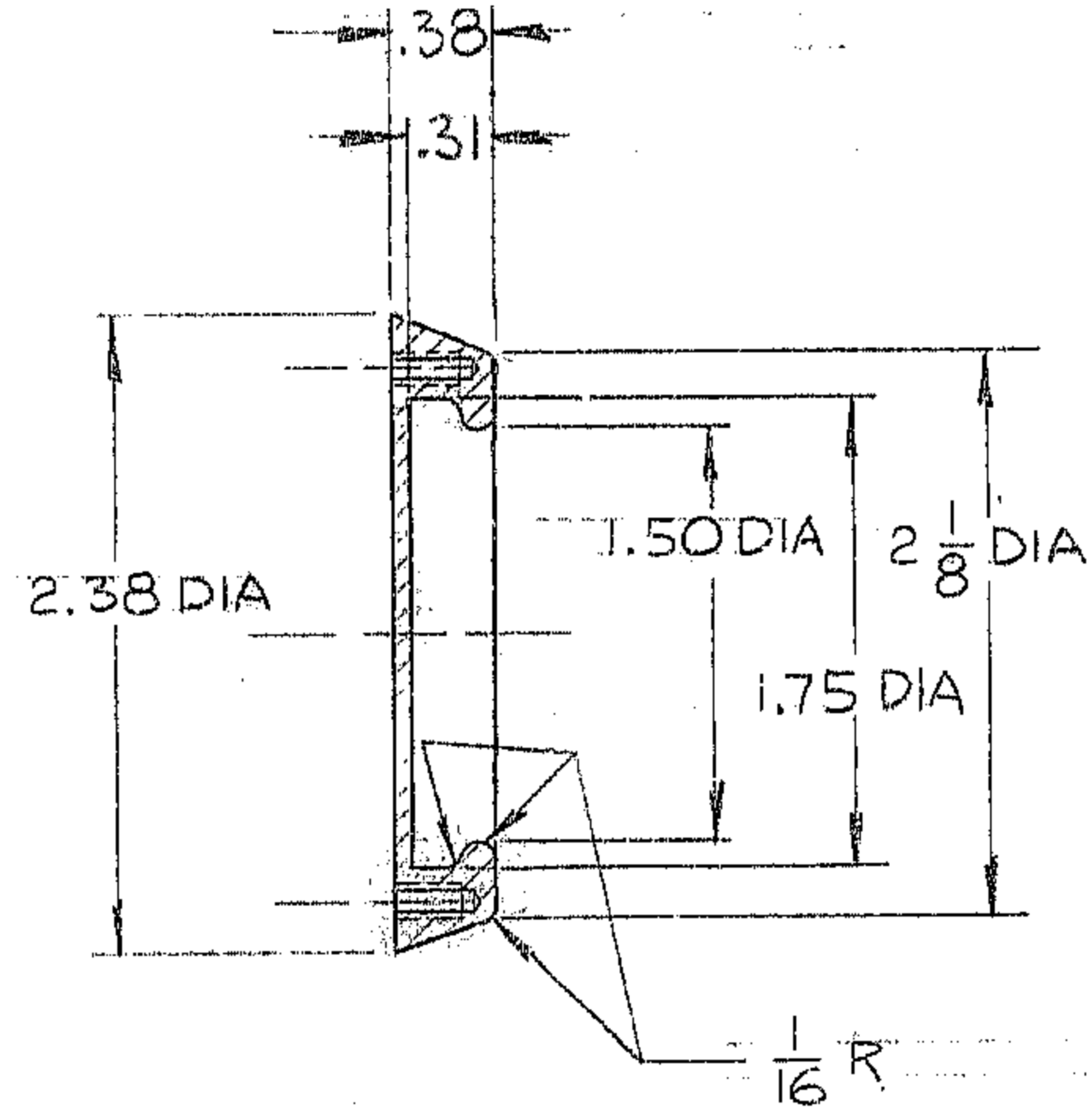
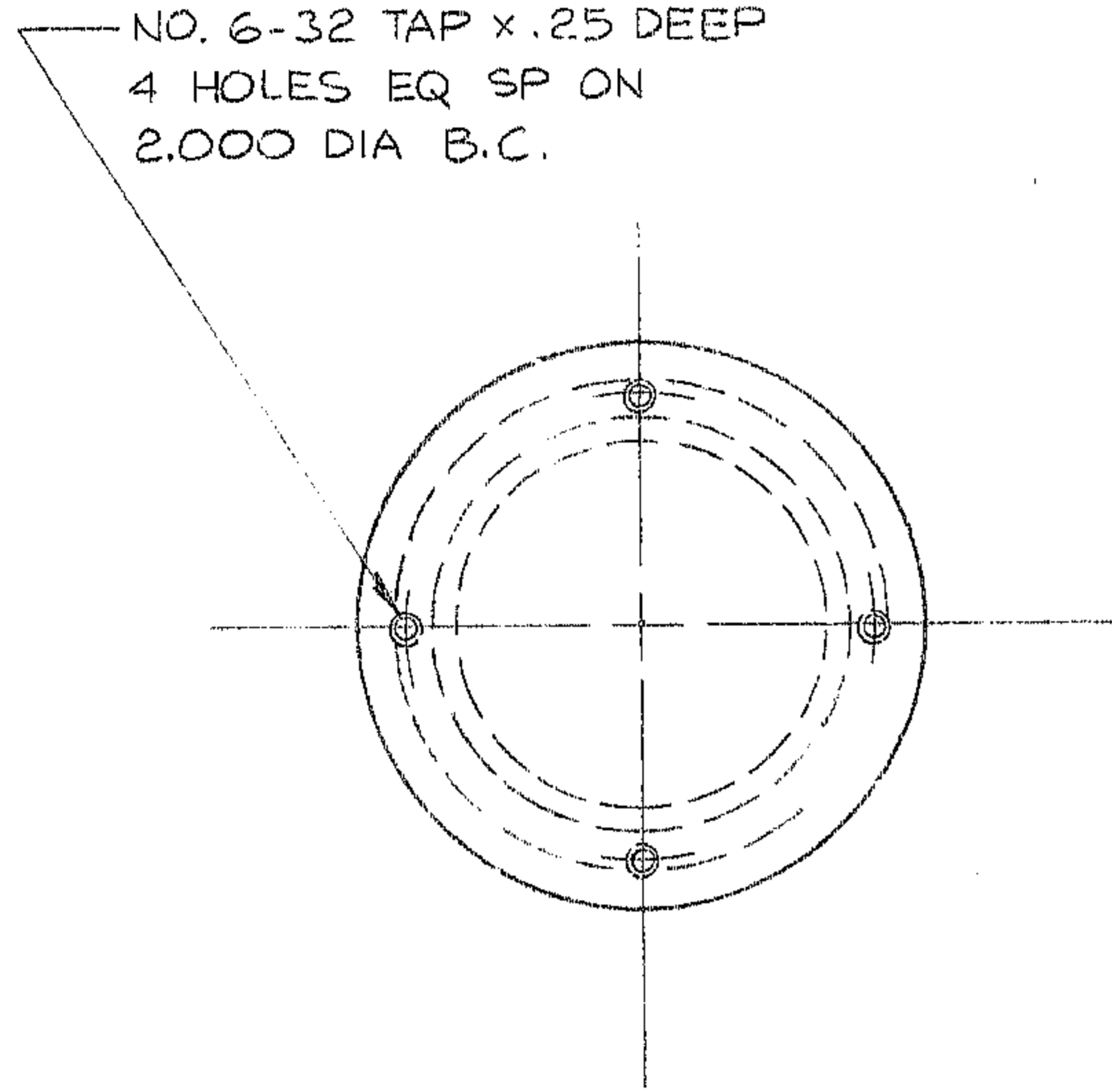


THIS DOCUMENT CONTAINS INFORMATION PROPRIETARY TO WESTERN GEAR CORPORATION. ALL DESIGN, MANUFACTURING, REPRODUCTION, USE, PATENT, AND SALES RIGHTS REGARDING THE SAME ARE HEREBY EXPRESSLY RESERVED BY WESTERN GEAR CORPORATION. THIS DOCUMENT IS SUBMITTED FOR REFERENCE PURPOSES ONLY AND SHALL NOT BE DISCLOSED TO ANY UNAUTHORIZED PERSON OR INCORPORATED INTO ANY OTHER PROJECT.

REVISIONS				
ZONE	LTR	DESCRIPTION	DATE	APPROVED
A		REVISED PER AURA REQ.	3-31-70	WRL



REF. FILE 1190

NO. REQ. - 4 PER NEXT ASSEM.
 MATL. - 2024-T351
 FINISH - GREY ANODIZE
 HT. TRT. -

N/A-2150.501E002

LIMITS ON MACHINED DIMENSIONS EXCEPT AS NOTED ANGULAR $\pm 1^\circ - 1/2^\circ$ LINEAR .X = $\pm .1$.XX = $\pm .03, .01$.XXX = $\pm .010, .003$ FRACTIONAL $\pm 1/32$ BREAK ALL SHARP EDGES	150 INCH STELLAR TELESCOPE	Western GEAR CORPORATION HEAVY MACHINERY DIVISION EVERETT, WASHINGTON	WINDOW OPERATING KNOB	
	DRAWN MMS/A-17-69 CHECK WRL 4-2-70 ENGR P 4-10-70		SEC. MIRROR & PRIME FOCUS ASSY	
APPROVED	SIZE B	CODE IDENT NO. 16603	2150.501B118	
	SCALE FULL	WT. .10	LB SHEET	OF

BOLLER & CHIVENS DATA:
 NEXT ASSY: E-30228, JOB NO: 58070

B-31304