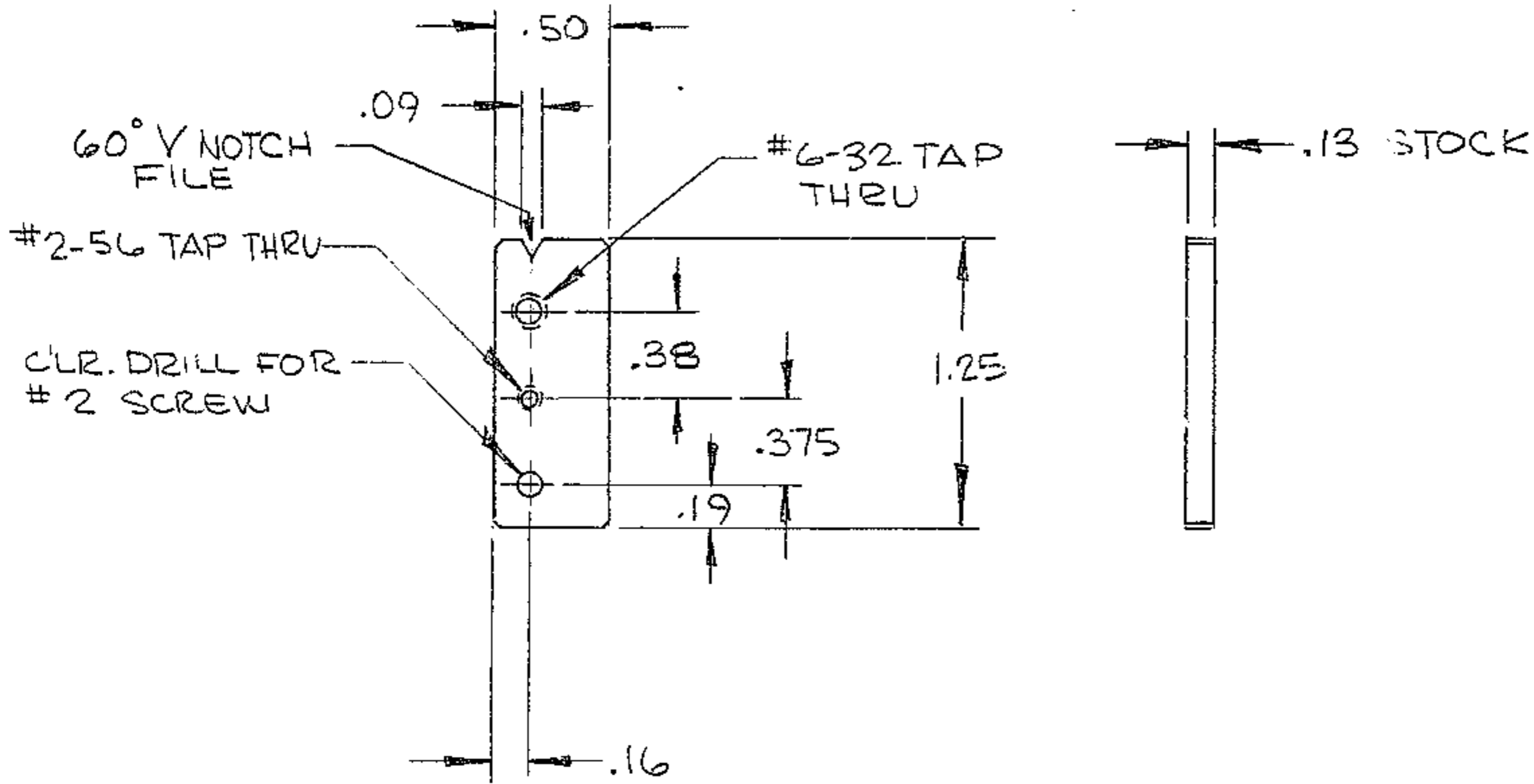


REVISIONS

| LTR | DESCRIPTION | DATE | APPROVED |
|-----|----------------|----------|----------|
| A | No. REQ. WAS 2 | 10-14-96 | J.H. 1 |



REF. 1190

NO. REQ. - 1 PER NEXT ASSEM.
 MAT'L - 2024-T4 ALUM.
 FINISH - BLACK ANODIZE
 HT. TRT. -

N/A-2150.501E002

LIMITS ON MACHINED DIMENSIONS EXCEPT AS NOTED
 ANGULAR ± 1/2°
 LINEAR
 .X = ± .1
 .XX = ± .01
 .XXX = ± .003
 FRACTIONAL ± 1/32

BREAK ALL SHARP EDGES

150" STELLAR TELESCOPE
 DRAWN R. CHAVEZ - 4-2-70
 CHECK WR 4-2-70
 ENGR R 4-10-70

ORIGINAL
 APPROVED

WESTERN GEAR CORPORATION

HEAVY MACHINERY DIVISION
 EVERETT, WASHINGTON

SWITCH MOUNT PLATE
 SEC. MIRROR & PRIME FOCUS ASS'Y

| | | | |
|------------------|--------------------------------|--------------|-----------------|
| SIZE A | CODE IDENT NO. 16603 | 2150.501A134 | REV A |
|------------------|--------------------------------|--------------|-----------------|

SCALE FULL WT. .005 LB SHEET 1 OF 1