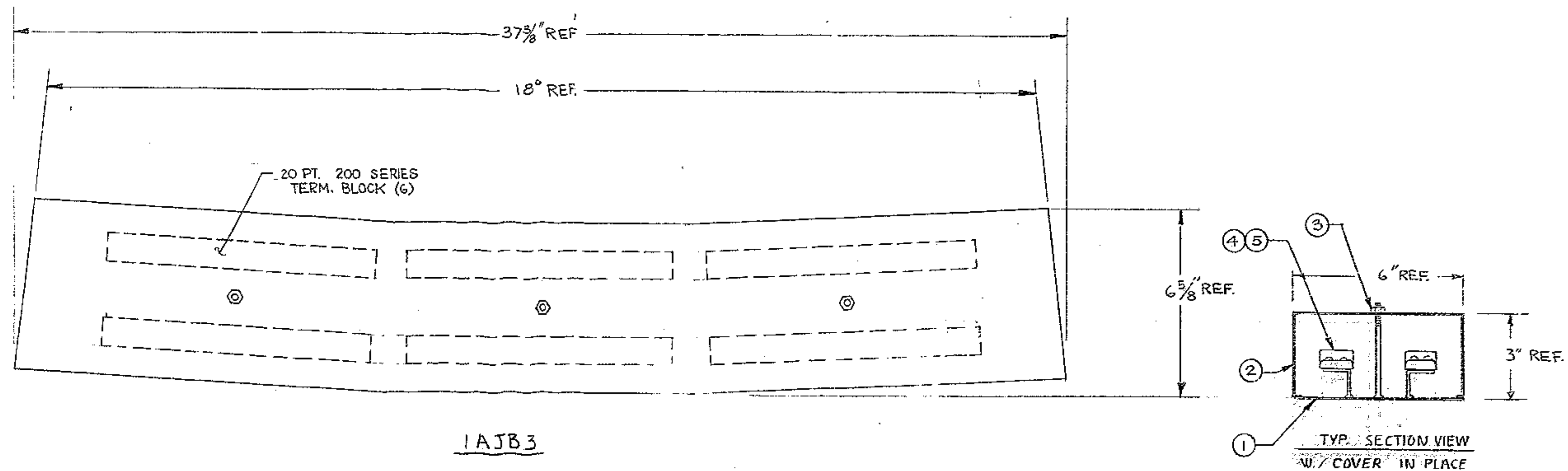
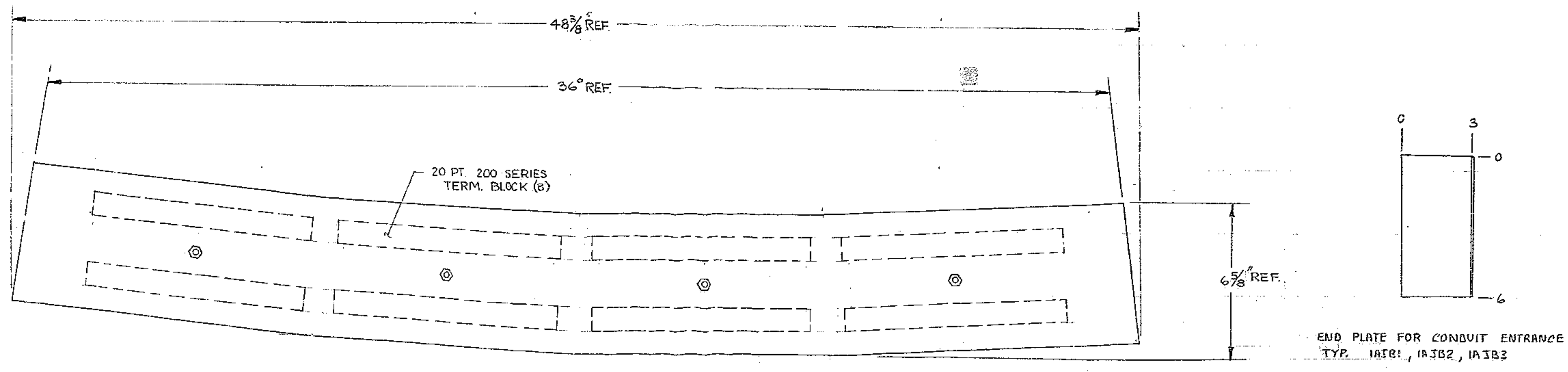


IAJB2



IAJB3



IAJB1

IA JB1 BILL OF MATERIAL

P/N	QTY	DRAWING NO.	DESCRIPTION
1	1	2150.500-E042-1	MOUNTING PL.
2	1	2150.500-E042-4	COVER
3	4	COMML.	5/16-18 HEX NUT
4	8	COMML.	MARATHON TERM. STRIP 200 SERIES, 20 POINTS
5	32	COMML.	#8-32 RD HD MACHINE SCREW

IA JB2 BILL OF MATERIAL

P/N	QTY	DRAWING NO.	DESCRIPTION
1	1	2150.500-E042-2	MOUNTING PL.
2	1	2150.500-E042-5	COVER
3	2	COMML.	5/16-18 HEX NUT
4	4	COMML.	MARATHON TERM. STRIP 200 SERIES, 20 POINTS
5	16	COMML.	#8-32 RD HD MACHINE SCREW

IA JB3 BILL OF MATERIAL

P/N	QTY	DRAWING NO.	DESCRIPTION
1	1	2150.500 E042-3	MOUNTING PLATE
2	1	2150.500 E042-6	COVER
3	3	COMML.	5/16-18 HEX NUT
4	6	COMML.	MARATHON TERM. STRIP 200 SERIES, 20 POINTS
5	24	COMML.	#8-32 RD. HD. MACH. SCREWS 3/4" LONG

NOTE:

1. TERM. BLOCK MFG. PLATE AND COVER TO BE OF WELDED ALUMINUM CONSTRUCTION (14G)
2. ALL ASSEMBLIES SUPPLIED WITH ZINC CHROMATE PRIMER FINISH
3. REFER TO UPCS1 FABRICATION DWG. 70641-5 SH.2, WESTER GEAR DWG. 2150.500-E042

1215

<p>REFERENCE DRAWINGS</p> <p>ENGR. A.W.</p> <p>DRAWN S.A.</p> <p>CHECKED</p> <p>RECORDED 3-4-71</p> <p>SCALE 3/8" = 1"</p>	<p>REVISIONS</p> <table border="1"> <tr> <th>NO.</th> <th>DESCRIPTION</th> <th>BY</th> <th>DATE</th> </tr> <tr> <td>D</td> <td>DELETED BRAKE COVER ASSY</td> <td>UN</td> <td>9-5-75</td> </tr> <tr> <td>C</td> <td>ADDED BRAKE CKT ASSY</td> <td>G.S.</td> <td>11-9-71</td> </tr> <tr> <td>B</td> <td>GENERAL REVISIONS</td> <td>SFB</td> <td>7-20-71</td> </tr> <tr> <td>A</td> <td>ELIMINATE BRAKE CKT. ASSY.</td> <td>AW</td> <td>6-24-71</td> </tr> </table>	NO.	DESCRIPTION	BY	DATE	D	DELETED BRAKE COVER ASSY	UN	9-5-75	C	ADDED BRAKE CKT ASSY	G.S.	11-9-71	B	GENERAL REVISIONS	SFB	7-20-71	A	ELIMINATE BRAKE CKT. ASSY.	AW	6-24-71
NO.	DESCRIPTION	BY	DATE																		
D	DELETED BRAKE COVER ASSY	UN	9-5-75																		
C	ADDED BRAKE CKT ASSY	G.S.	11-9-71																		
B	GENERAL REVISIONS	SFB	7-20-71																		
A	ELIMINATE BRAKE CKT. ASSY.	AW	6-24-71																		
<p>UNITED POWER & CONTROL SYSTEMS, INC.</p> <p>431 North 34th, Seattle, Wash. 98103</p>																					
<p>TITLE: OUTLINE DIAGRAM</p> <p>1A TERMINAL BOXES</p> <p>UPPER RING # SECONDARY ASSEMBLY</p>																					
<p>DRAWING NO. 2150.500-E040</p> <p>REV. NO. 0 SH. 1 OF 1</p>																					
<p>CONTRACT NO. W.G. E.3002-00</p> <p>U.P.C.S.I. #70641-1</p>																					