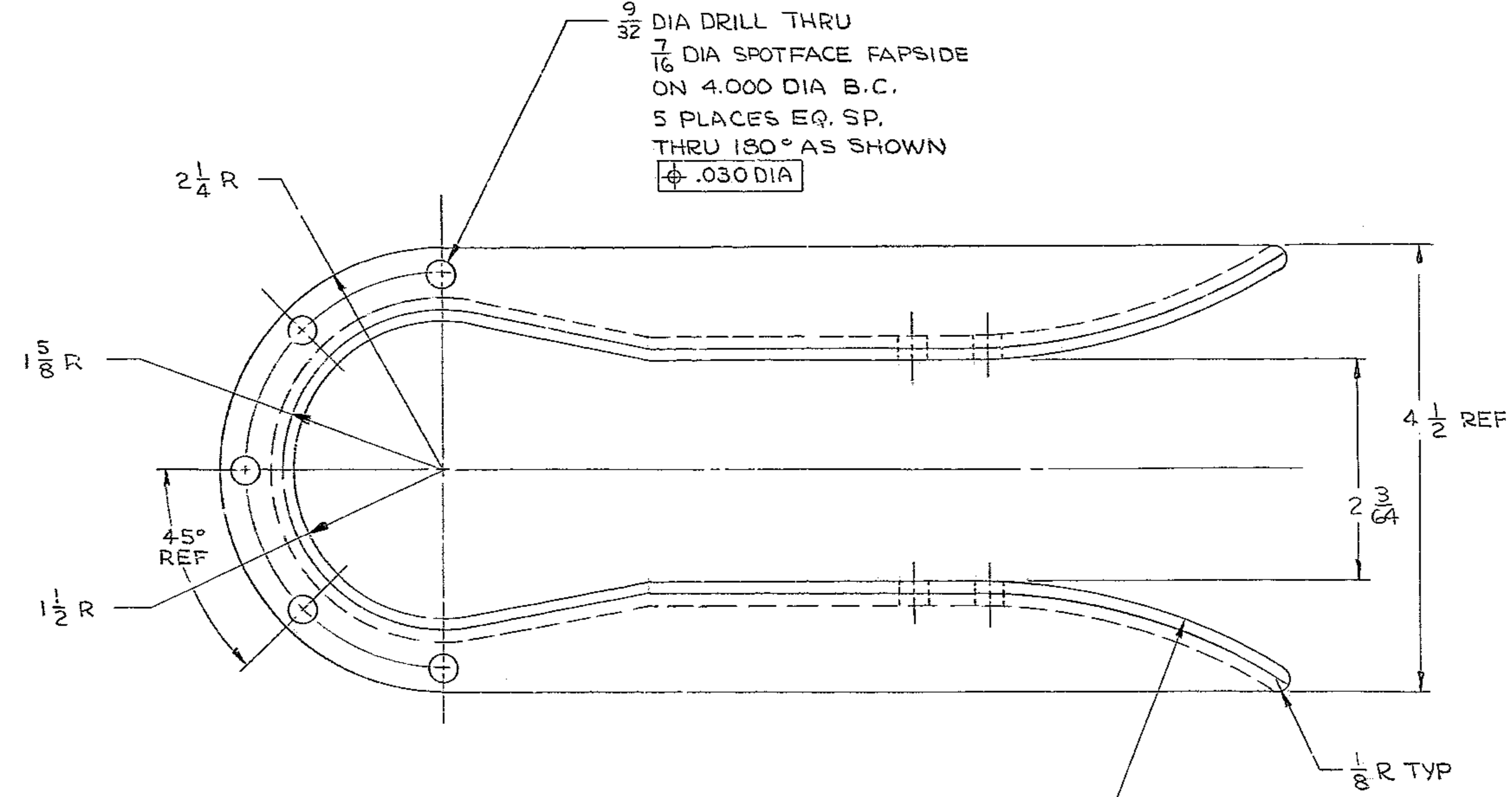
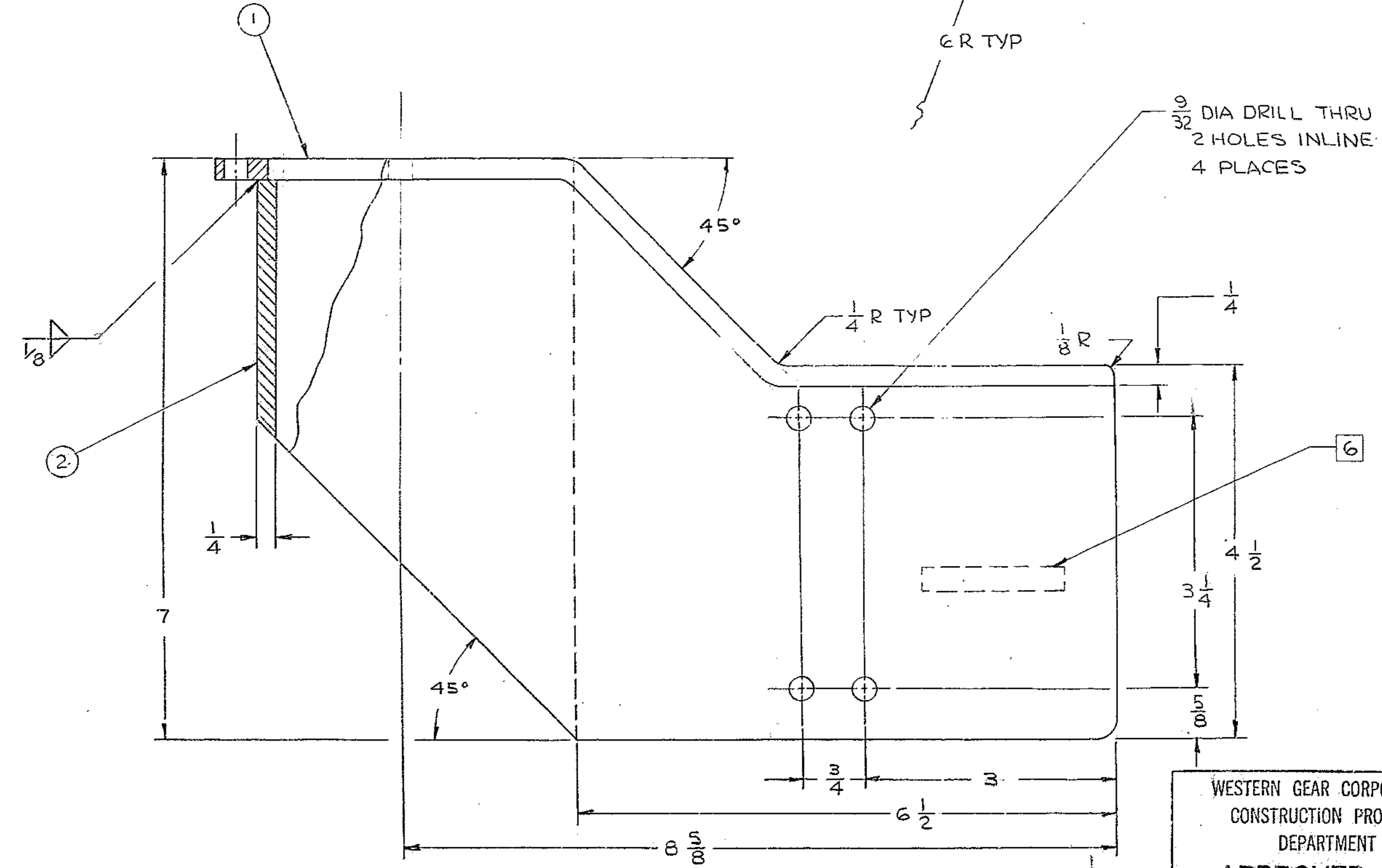


| REVISIONS | | | | |
|-----------|-----|---------------------|---------|----------|
| ZONE | LTR | DESCRIPTION | DATE | APPROVED |
| | A | REL FOR MANUFACTURE | 1/23/70 | GR |
| | B | CHG D. TITLE | | |



| MATERIAL LIST | | | | |
|---------------|-----|-------------------------|---------------|--------|
| PC. NO | QTY | DESCRIPTION | MATL & SPEC | RH. WT |
| 1 | 1 | PL 4 1/2 x 1/4 x 11 | STL ASTM A-36 | 3.5 |
| 2 | 1 | PL 6 1/2 x 1/4 x 22 3/4 | STL ASTM A-36 | 10.5 |



- NOTES:
- ALL DIMENSIONS ARE IN INCHES.
 - FABRICATION TOLERANCE EXCEPT AS NOTED:
UP TO 10 INCHES ± 1/16
10 TO 50 INCHES ± 1/8
50 INCHES & OVER ± 1/4
 - WELD PER W.G.C. SPEC. 752, APPENDIX T1.
 - STRESS RELIEVE AFTER WELDING PER W.G.C. SPEC 510.
 - APPLY ONE (1) COAT PRIMER PAINT IMMEDIATELY AFTER STRESS RELIEVE AND CLEANING PER W.G.C. SPEC 511.
- ⑥ STAMP PART NO. 2150.500010 APPROX WHERE SHOWN.

WESTERN GEAR CORPORATION
CONSTRUCTION PROJECTS
DEPARTMENT
APPROVED FOR
PROCUREMENT
Gene Russo DATE 1/23/70

NEXT ASSY: 2150.500E002 (W.G. N102966)

REF. FILE 1189

| FIND NO. | PART NO. | DESCRIPTION | QTY | MATERIAL | CODE IDENT |
|---|----------|-----------------------------------|-----|---|------------|
| LIST OF MATERIAL (LM) | | | | | |
| LIMITS ON MACHINED DIMENSIONS EXCEPT AS NOTED | | 150 IN STELLAR TELESCOPE MOUNTING | | HEAVY MACHINERY DIVISION EVERETT, WASHINGTON | |
| ANGULAR = ± 1° 0' | | DRAWN <i>E. Strong</i> 5-18-68 | | | |
| LINEAR: | | CHECK <i>V. Neelaps</i> 8-27-68 | | GUIDE CABLE WRAP UP-UPPER RING AND SECONDARY ASSEMBLY | |
| .X = ± .1 .XXX = ± .010 | | ENGR | | | |
| .XX = ± .03 FRACTIONAL = ± 1/32 | | SEE MATL LIST | | W.G.E107774 | |
| BREAK ALL SHARP EDGES | | APPROVED | | SIZE CODE IDENT NO. D 16603 2150.500010 | |
| MATERIAL | | SCALE 1/1 | | WT LB SHEET 1 OF 1 | |
| REV | | REV | | REV | |

2150.500010

A