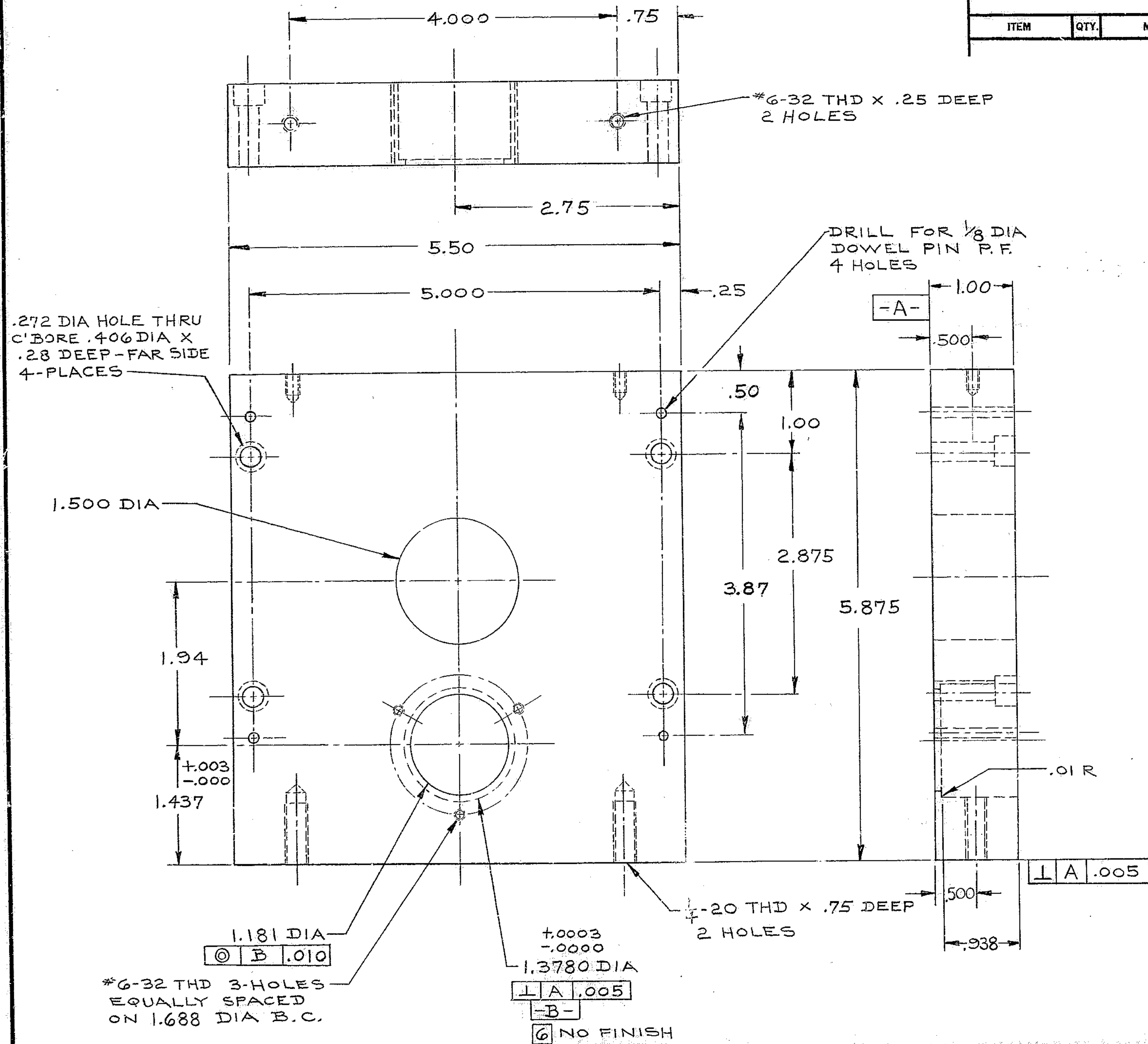


# BILL OF MATERIAL

ITEM	QTY.	MATERIAL	DESCRIPTION	WEIGHT
------	------	----------	-------------	--------



6 FINISH: BLACK SULFURIC ANODIZE, EXCEPT AS NOTED  
 5-BREAK SHARP EDGES .03  
 4 IDENTIFY BY \_\_\_\_\_ AT LOCATION 4, "AURA INC. MADE IN U.S.A."  
 3-STAMP MATCH MARKS ON ALL MATING PARTS WHERE NECESSARY.  
 2-PROJECT DRAWINGS: \_\_\_\_\_  
 1-FOR NEXT ASSY. SEE 2150.345-E 102 202  
 NOTES:

ALUM ALY 6061-T6

LET.	REVISION	ECR	DATE	BY

TOLERANCES UNLESS OTHERWISE NOTED  
 DECIMAL DIMENSIONS  
 00.00 ± .010  
 00.000 ± .003  
 FRACTIONAL DIMENSIONS  
 UP TO 18' ± 1/64  
 18' TO 50' ± 1/32  
 50' & OVER ± 1/16  
 ANGLES ± 0° - 30'  
 ALL SURFACES TO HAVE 125/ FINISH UNLESS OTHERWISE NOTED.

**KITT PEAK NATIONAL OBSERVATORY**  
 OPERATED BY THE ASSOCIATION OF UNIVERSITIES FOR RESEARCH IN ASTRONOMY, INC.  
 UNDER CONTRACT WITH NATIONAL SCIENCE FOUNDATION

150 INCH STELLAR TELESCOPE REF. FILE 1186  
 NAME THRUST BEARING MOUNT SCALE FULL  
 R.A. & DEC. SYNCRO TRANSMITTER ASSY PRINT ISSUED

DESIGNED BY CARLSON	DATE 3-1-72	APPROVED BY [Signature]	DATE 6-16-72	DRAWING NUMBER 2150.345-C104	REV.
DRAWN BY D.L.B.	DATE 5-20-72	APPROVED BY	DATE		
CHECKED BY J. SHINELY	DATE 6-16-72	APPROVED BY	DATE		