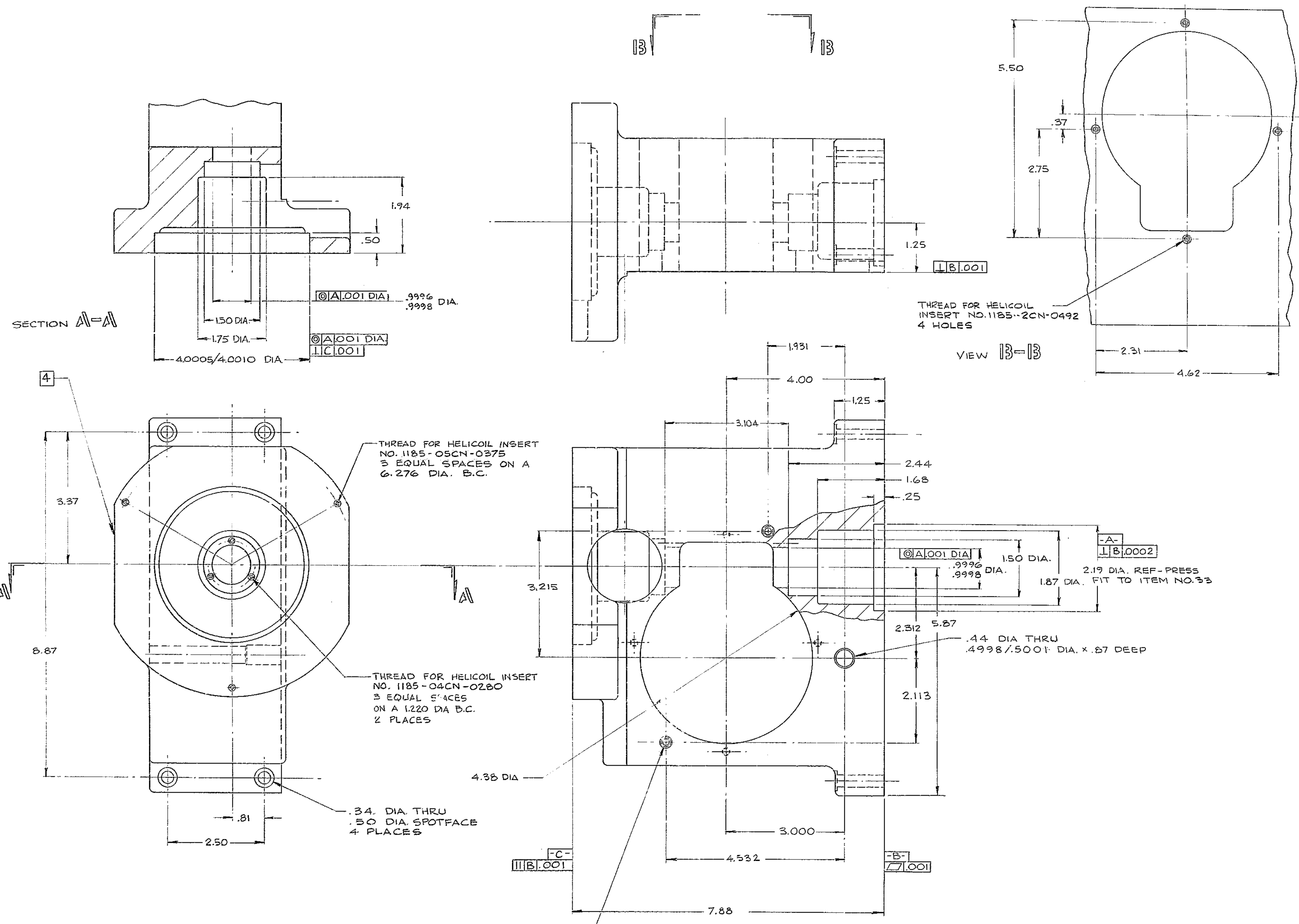


ITEM	QTY	MATERIAL	DESCRIPTION	WEIGHT
				2.52



- 9 ALL SURFACES OF THE CASTING AS CAST AND READY FOR INSPECTION OR MACHINING, SHALL BE SANDBLASTED WITH NO. 80 GRT AT 80 PSI.
- 8 INTERPRET DWG PER USAS1-Y145-1966
- 7 ALL DIMENSIONS AFTER COATING.
- 6 BLACK ANODIZE PER MIL-A-8625 TYPE II, CL2.
- 5 BREAK SHARP EDGES .03
- 4 IDENTIFY BY STEEL STAMP AT LOCATION 4
- 3 STAMP MATCH MARKS ON ALL MATING PARTS WHERE NECESSARY
- 2 PROJECT DRAWINGS
- 1 FOR NEXT ASSY. SEE 2150.340 E.002

NOTES: FOR MACHINED CASTING

KITTY PEAK NATIONAL OBSERVATORY
 OPERATED BY THE ASSOCIATION OF UNIVERSITIES FOR RESEARCH IN ASTRONOMY, INC.
 UNDER CONTRACT WITH NATIONAL SCIENCE FOUNDATION

150" STELLAR TELESCOPE FILE 1186
 SCALE 1/1
 PRINT ISSUED

DESIGNED BY	DATE	APPROVED BY	DATE	DRAWING NUMBER	REV.
				2150.340 E.041	
				SHEET 2 OF 2	

LET.	REVISION	ECR	DATE	BY