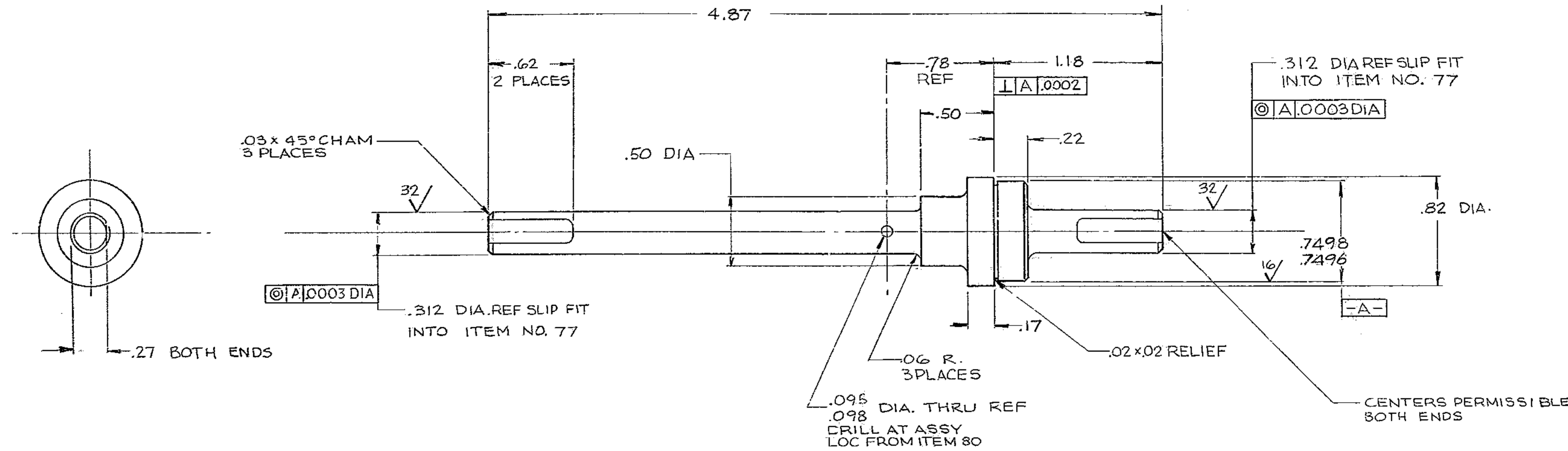


BILL OF MATERIAL

ITEM	QTY	MATERIAL	DESCRIPTION	WEIGHT
				.17



8. MAT'L: STEEL AISI 4340
 7. HEAT TREAT R/C 32-36
 6. INTERPRET DWG PER USAS1-Y14.5-1966
 5-BREAK SHARP EDGES .03
 4-IDENTIFY BY TAG _____ AT LOCATION _____ "MADE IN U.S.A."
 3-STAMP MATCH MARKS ON ALL MATING PARTS WHERE NECESSARY.
 2-PROJECT DRAWINGS _____
 1-FOR NEXT ASSY. SEE 2150.340 E002
- NOTES-

TOLERANCES UNLESS OTHERWISE NOTED		KITT PEAK NATIONAL OBSERVATORY	
DECIMAL DIMENSIONS	00.00 ± .010 00.002 ± .003	OPERATED BY THE ASSOCIATION OF UNIVERSITIES FOR RESEARCH IN ASTRONOMY, INC. UNDER CONTRACT WITH NATIONAL SCIENCE FOUNDATION	
FRACTIONAL DIMENSIONS	UP TO 18' ± 1/64 18' TO 50' ± 1/32 50' & OVER ± 1/16	150" STELLAR TELESCOPE REF. FILE 1186	
ANGLES ± 0°-30'		SCALE 2/1	
ALL SURFACES TO HAVE 125 FINISH UNLESS OTHERWISE NOTED.		PRINT ISSUED	
		NAME WORM SHAFT	
		DRAWING NUMBER 2150-340-D037	
DESIGNED BY	DATE	APPROVED BY	DATE
DRAWN BY	DATE	APPROVED BY	DATE
CHECKED BY	DATE	APPROVED BY	DATE
LET	REVISION	ECR	DATE BY