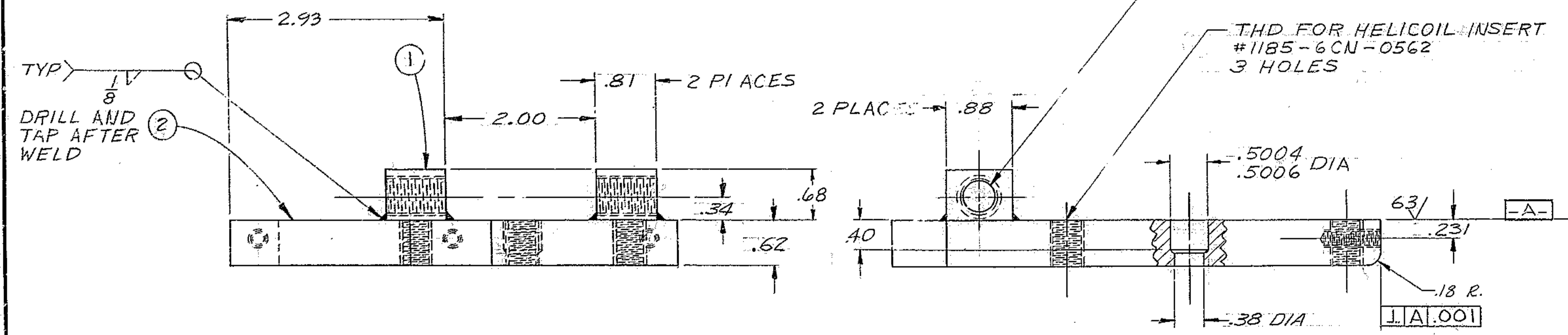
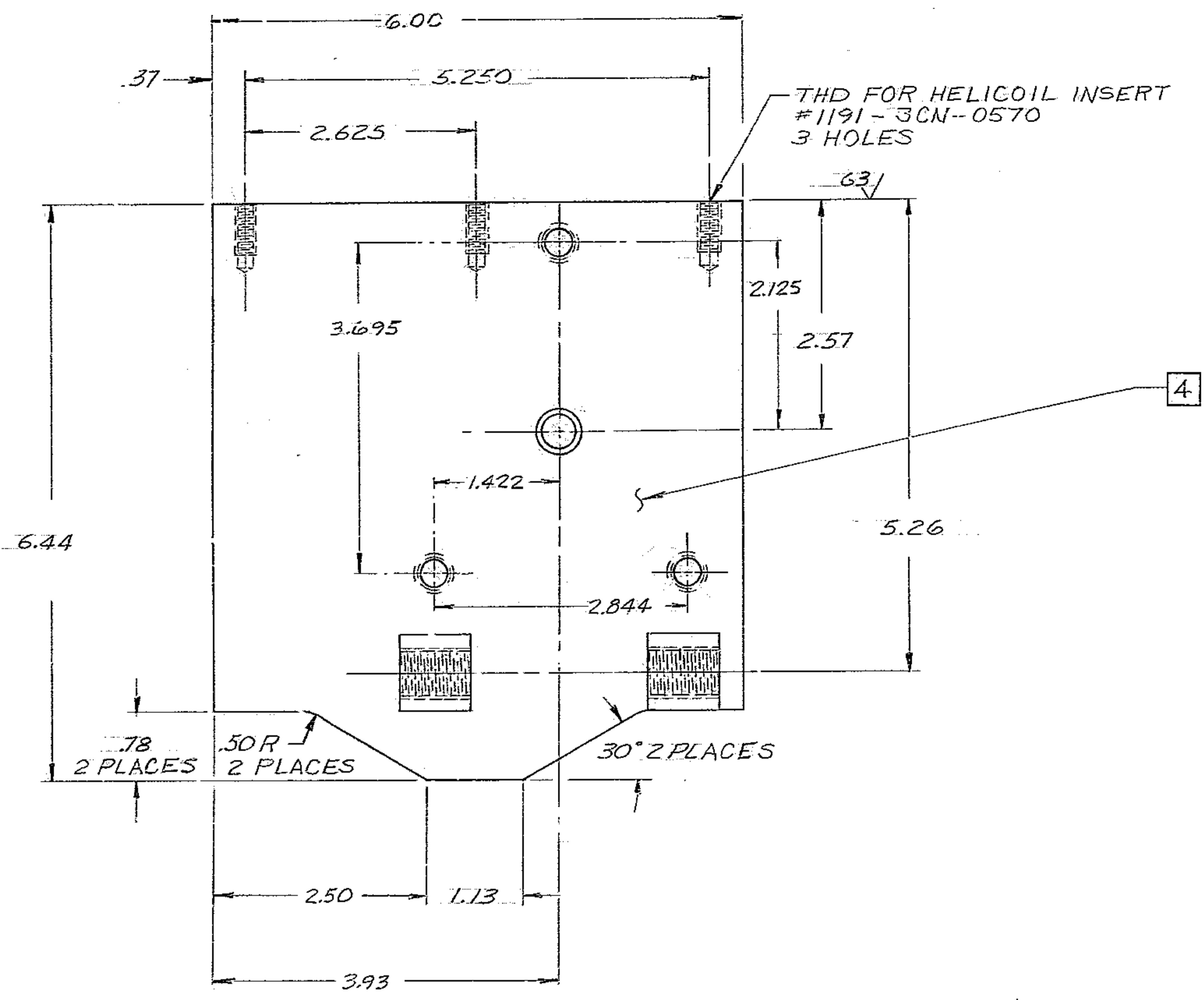


BILL OF MATERIAL				
ITEM	QTY.	MATERIAL	DESCRIPTION	WEIGHT
1	2	6061-T6 AL	.68 x .81 x .88	
2	1	6061-T6 AL	.62 x 6.00 x 6.44	

1.23



7. INTERPRET DWG PER USASI-Y14.5-1966.
 6. BLACK ANODIZE PER MIL-A-8625 TYPE II, CL 2, DIM. HELD AFTER ANODIZING.

5-BREAK SHARP EDGES .03
 4-IDENTIFY BY STL STAMP AT LOCATION 4
 3-STAMP MATCH MARKS ON ALL MATING PARTS WHERE NECESSARY.
 2-PROJECT DRAWINGS
 1-FOR NEXT ASSY. SEE 2150.340 E 002

NOTES:

KITT PEAK NATIONAL OBSERVATORY
 OPERATED BY THE
 ASSOCIATION OF UNIVERSITIES FOR RESEARCH IN ASTRONOMY, INC.
 UNDER CONTRACT WITH
 NATIONAL SCIENCE FOUNDATION

150" STELLAR TELESCOPE REF. FILE 1186
 NAME PIVOT - BOTTOM SCALE FULL
 PRINT ISSUED

TOLERANCES UNLESS OTHERWISE NOTED	
DECIMAL DIMENSIONS	00.00 ± .010 00.000 ± .003
FRACTIONAL DIMENSIONS	UP TO 18' ± 1/64 18" TO 50' ± 1/32 50" & OVER ± 1/16
ANGLES	± 0° - 30'
ALL SURFACES	TO HAVE 125 FINISH UNLESS OTHERWISE NOTED.

DESIGNED BY	DATE	APPROVED BY	DATE	DRAWING NUMBER	REV.
PIERCE	3/19/71	CHASS.	10/10/71	2150.340 -D 008	
CHASS.	10-19-71	CHASS.	10-19-71		

LET.	REVISION	ECR	DATE	BY