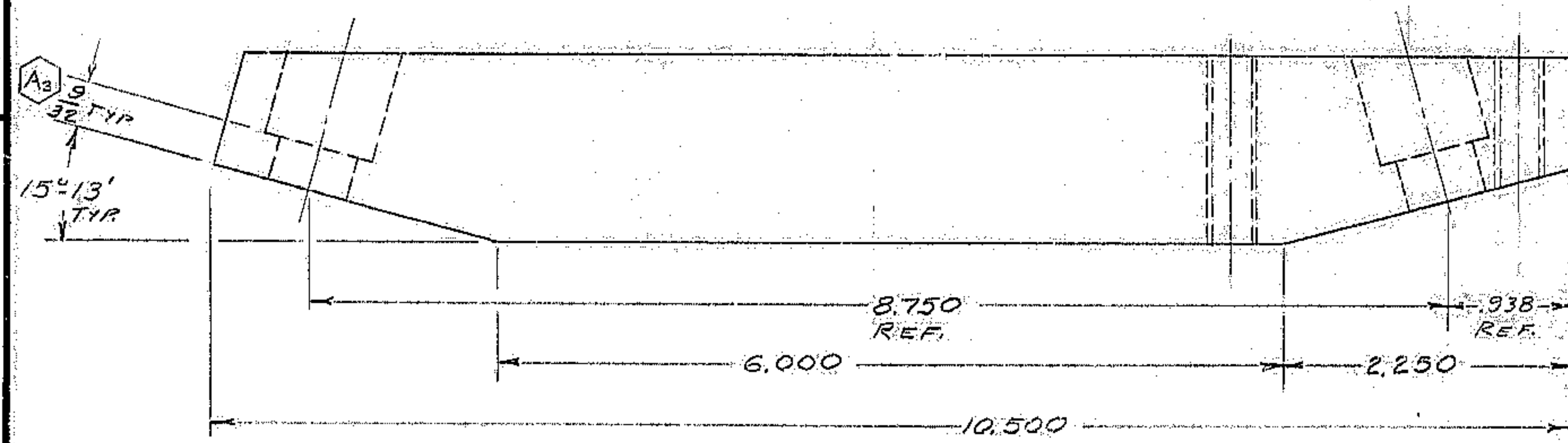
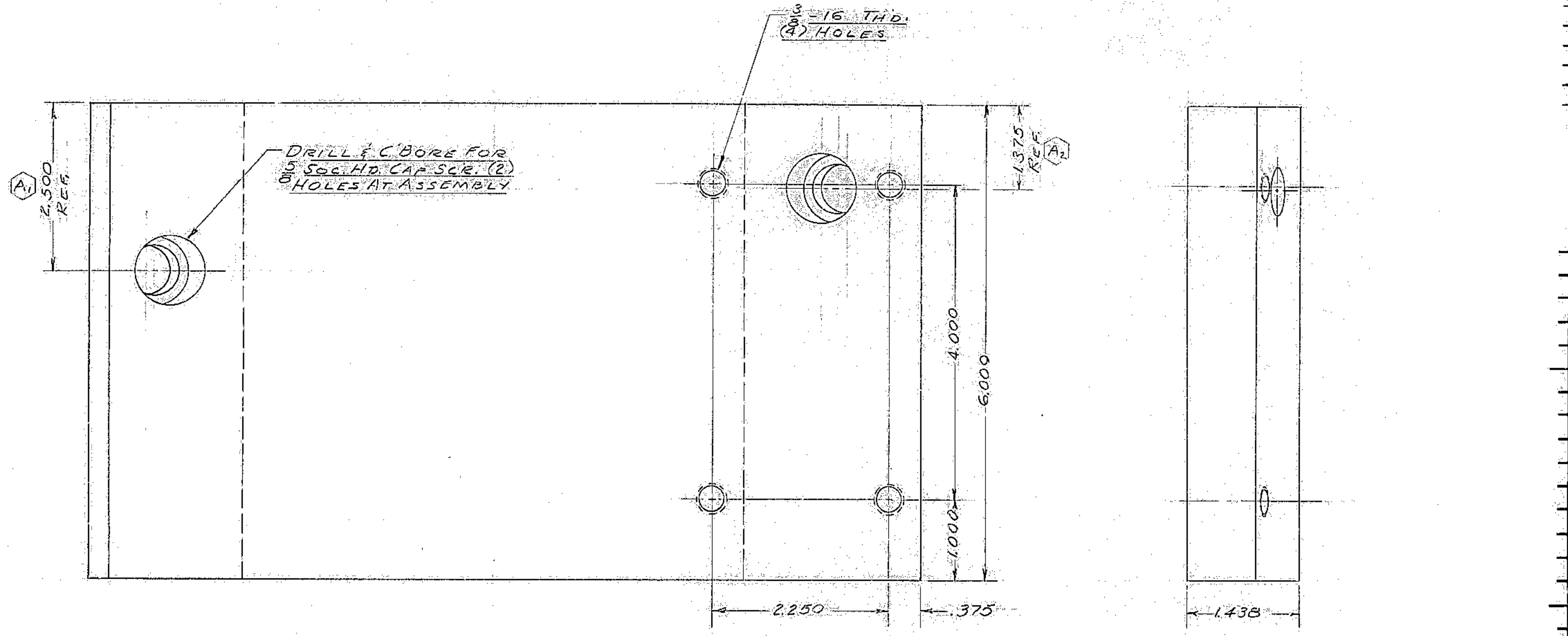


NOTES: UNLESS OTHERWISE NOTED

1. REMOVE ALL BURRS AND SHARP EDGES .03 R MAX.
2. MACHINED SURFACE ROUGHNESS $\sqrt{125}$
3. MATL: ALUM. ALLOY
4. FINISH: BLACK SULPHURIC ANODIZE

REVISIONS						
ZONE	LTR	DESCRIPTION	ECR	DATE	BY	APVD
C4	A1	WAS 2.125	2869	7/8/84	WFO	[Signature]
D2	A2	WAS 1.0625	2869	7/8/84	WFO	[Signature]
B4	A3	ADDED $\frac{3}{32}$ TYP.	2869	7/8/84	WFO	[Signature]



QTY REQD	PART OR IDENTIFYING NO.	DESCRIPTION	MATERIAL / SPECIFICATION	ITEM NO.
PARTS LIST				
TOLERANCES UNLESS OTHERWISE NOTED DECIMALS .XX ± .03 FRACTIONS ± — ANGULAR ± 0° 30'			KITT PEAK NATIONAL OBSERVATORY <small>OPERATED BY THE ASSOCIATION OF UNIVERSITIES FOR RESEARCH IN ASTRONOMY, INC. UNDER CONTRACT WITH NATIONAL SCIENCE FOUNDATION</small>	
NEXT ASSEMBLY 2150.340- E502		NAME R. A. BASE PLATE		REF. FILE 1186
SCALE FULL PRINT ISSUED		DESIGNED BY <i>[Signature]</i>	DATE 6/17/84	APPROVED BY <i>[Signature]</i>
		DRAWN BY <i>[Signature]</i>	DATE 6/17/84	APPROVED BY <i>[Signature]</i>
		CHECKED BY [Blank]	DATE [Blank]	APPROVED BY [Blank]
			DWG NO. 2150.340-C509	REV A
			RELEASE DATE 11-12-84	