

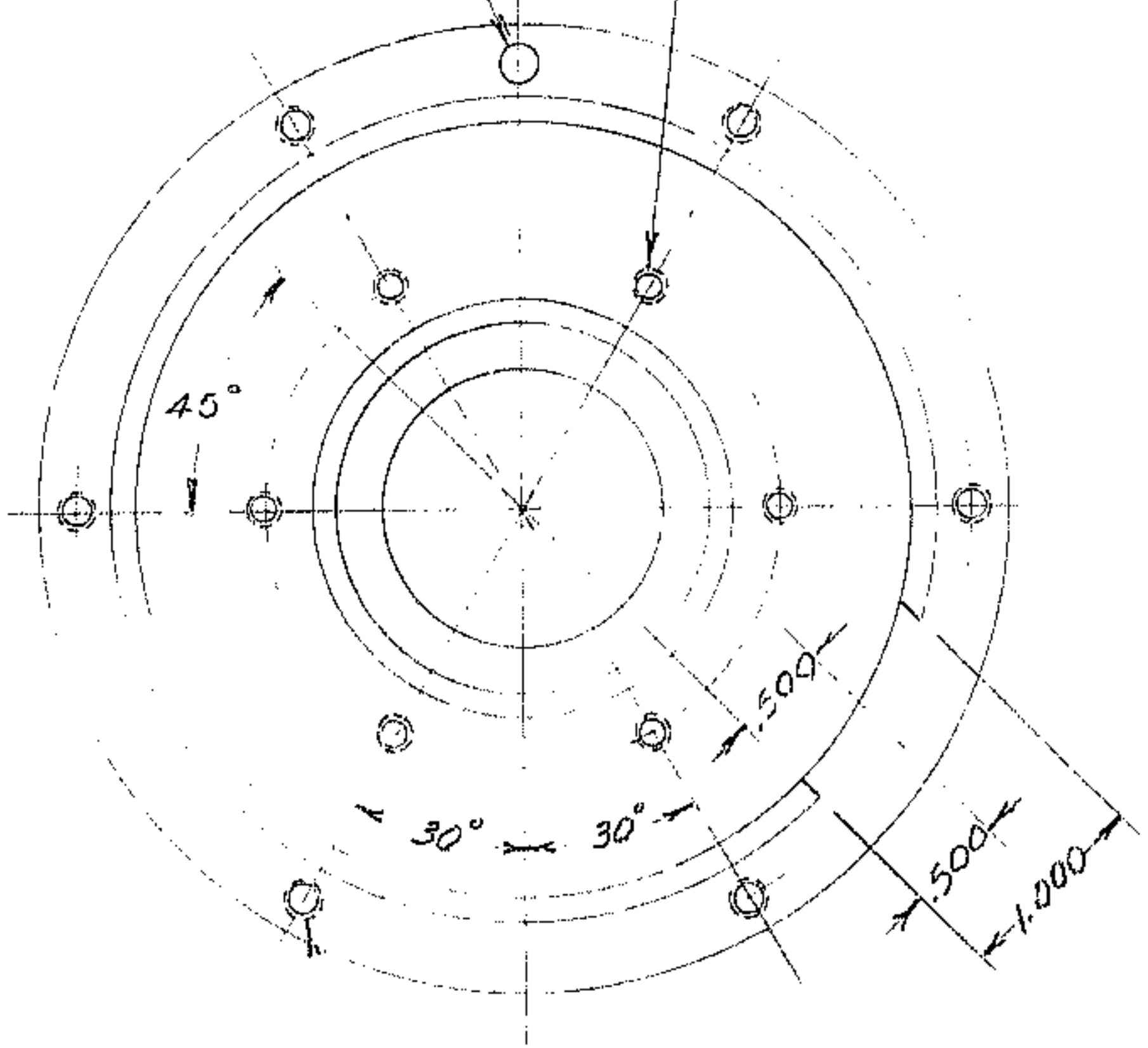
NOTES: UNLESS OTHERWISE NOTED

1. REMOVE ALL BURRS AND SHARP EDGES $.02$ R MAX
2. MACHINED SURFACE ROUGHNESS 125
3. MATL: 6061-T651 ALUM. ALLOY
4. FINISH: BLACK SULPHURIC ANODIZE

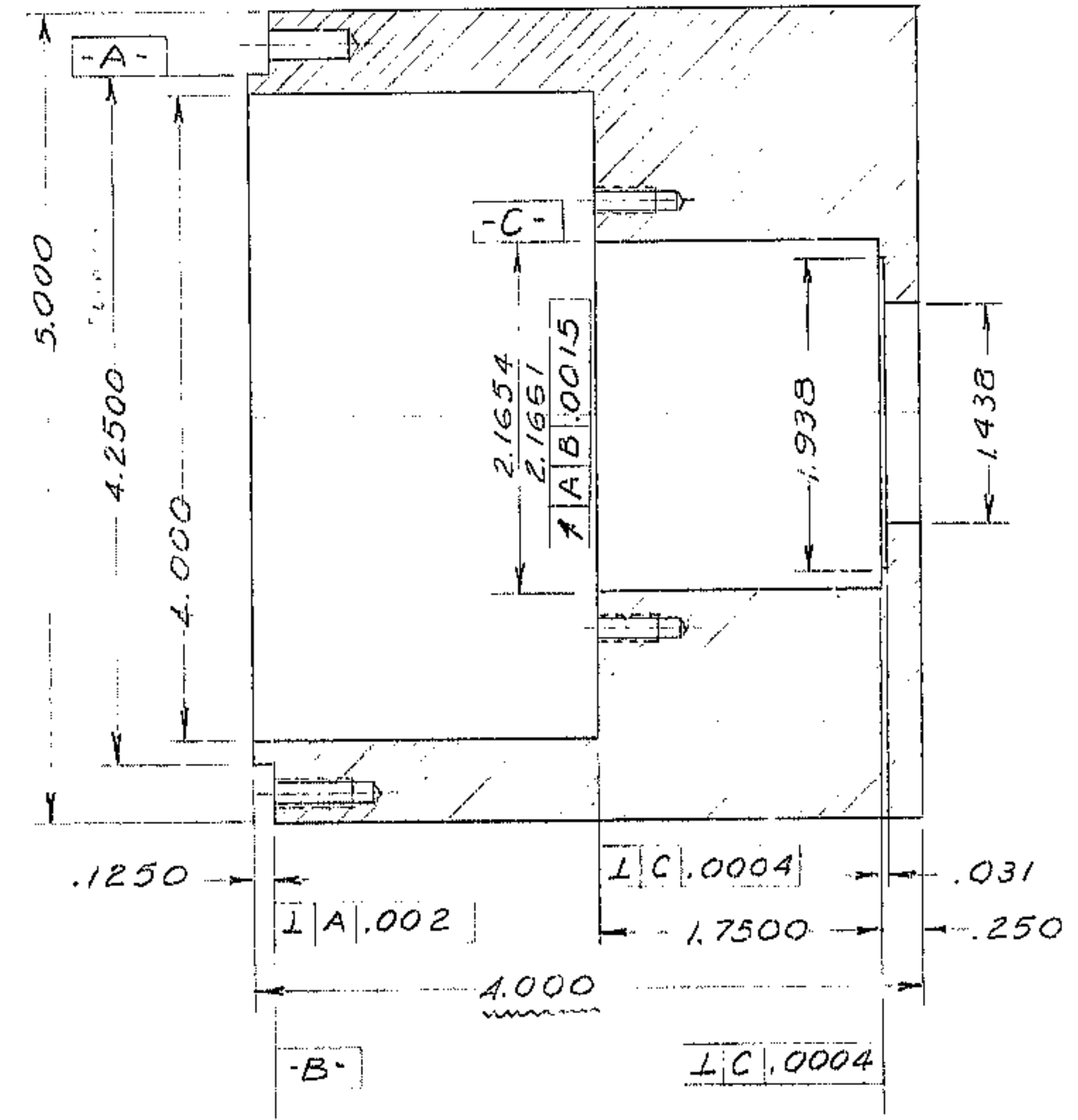
REVISIONS					
ZONE	LTR	DESCRIPTION	ECR	DATE	BY APVD

PRESS FIT FOR $\frac{3}{16}$ DOWEL
LOCATE FROM 2150.340-C505

#8-32 THD. $\times \frac{3}{8}$ DEEP (6) HOLES
EQ. SPACED AS SHOWN.
LOCATE FROM 2150.340-B502



#10-32 THD $\times \frac{1}{2}$ DEEP (6) HOLES
EQ. SPACED AS SHOWN.
LOCATE FROM 2150.340-C505



QTY REQD	PART OR IDENTIFYING NO.	DESCRIPTION	MATERIAL / SPECIFICATION	ITEM NO.
PARTS LIST				
TOLERANCES UNLESS OTHERWISE NOTED		KITT PEAK NATIONAL OBSERVATORY		
DECIMALS	FRACTIONS	ANGULAR	OPERATED BY THE ASSOCIATION OF UNIVERSITIES FOR RESEARCH IN ASTRONOMY, INC.	
.XX ± .03	± —	± 0° 30'	UNDER CONTRACT WITH NATIONAL SCIENCE FOUNDATION	
.XXX ± .010			NEXT ASSEMBLY	REF FILE
			2150.340 D502	1186
			NAME	
			BEARING HOUSING	
SCALE FULL	DESIGNED BY	DATE	APPROVED BY	DATE
PRINT ISSUED	DRAWN BY	DATE	APPROVED BY	DATE
	CHECKED BY	DATE	APPROVED BY	DATE
			DWG NO.	REV
			2150.340-C504	
			RELEASE DATE	
			11-12-84	