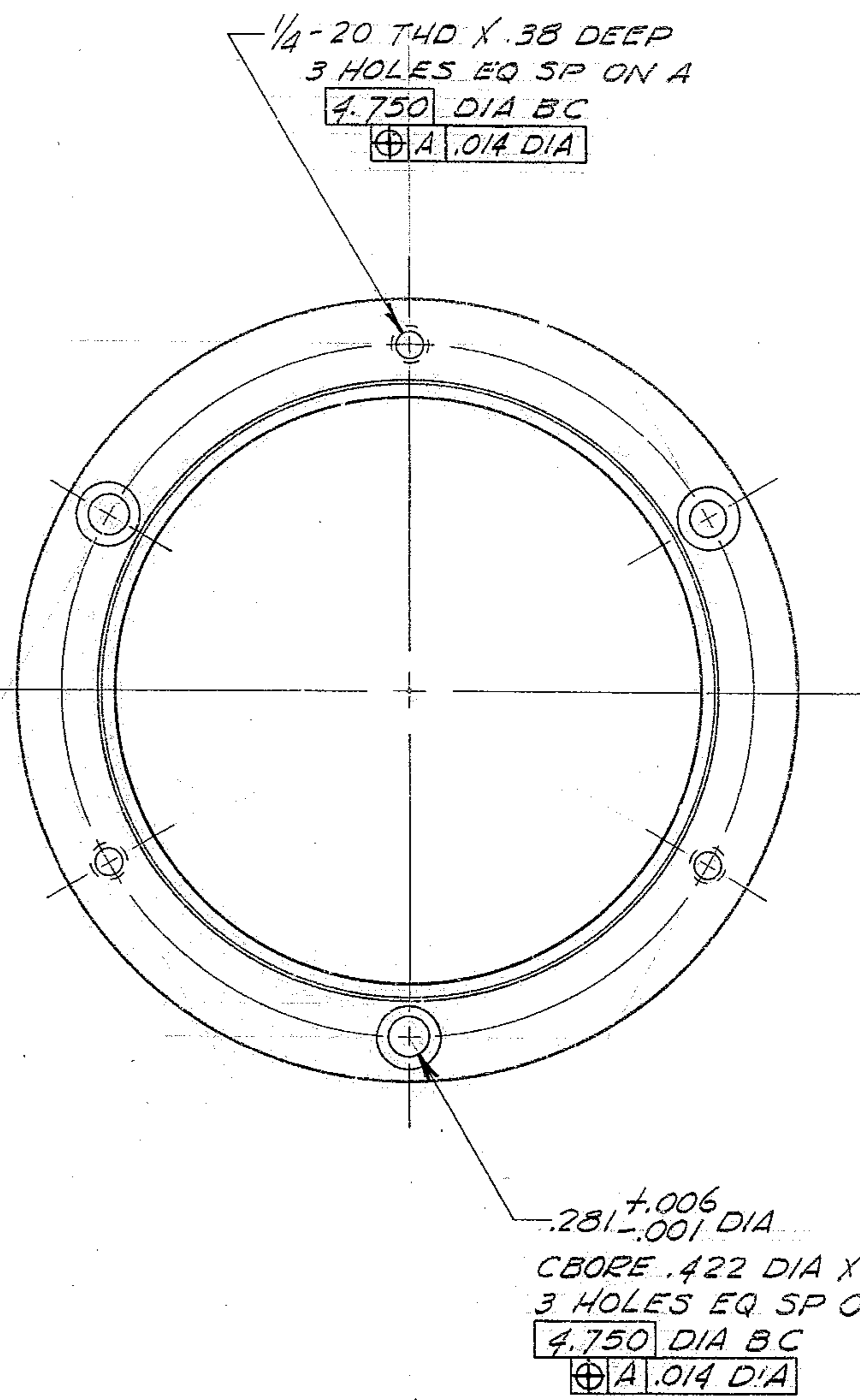
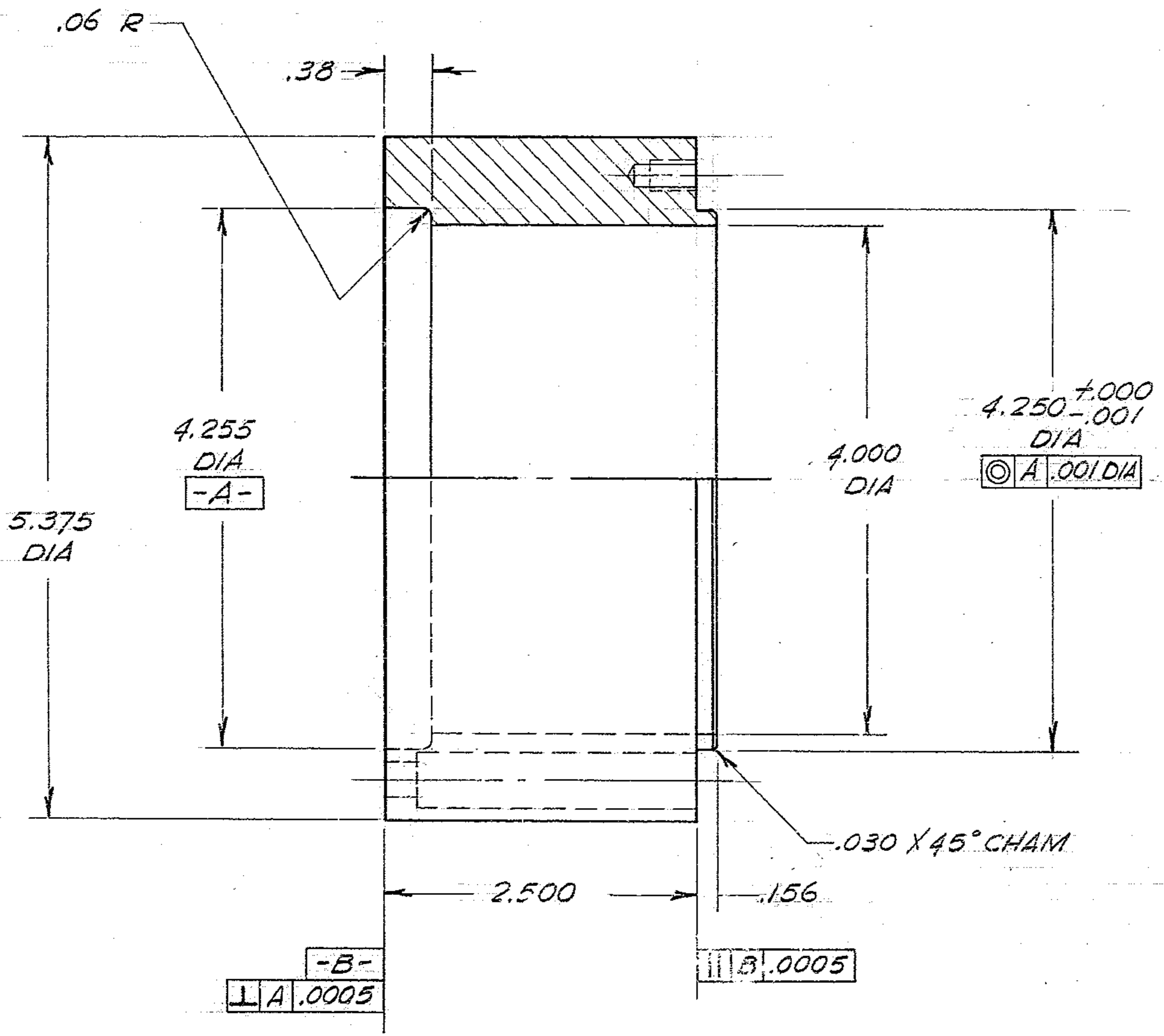


NOTES: UNLESS OTHERWISE NOTED

1. REMOVE ALL BURRS AND SHARP EDGES .010
2. MACHINED SURFACE ROUGHNESS $125\sqrt{}$
3. MATERIAL: 2024-T351 AL ALY
4. FINISH: BLACK SULFURIC ANODIZE
5. IDENTIFY BY STEEL STAMP ON O.D. OF CYLINDER
 $\frac{1}{8}$ HIGH CHARACTERS WHITE FILLED-
 SPACER-ENCODER ADAPTER
 2150.340-C048

REVISIONS						
ZONE	LTR	DESCRIPTION	ECR	DATE	BY	APVD



QTY REQD	PART OR IDENTIFYING NO.	DESCRIPTION	MATERIAL / SPECIFICATION	ITEM NO.
PARTS LIST				
TOLERANCES UNLESS OTHERWISE NOTED DECIMALS FRACTIONS ANGULAR .XX \pm .03 \pm — \pm 0° 30' .XXX \pm .010 \pm — \pm 0° 30'			KITT PEAK NATIONAL OBSERVATORY <small>OPERATED BY THE ASSOCIATION OF UNIVERSITIES FOR RESEARCH IN ASTRONOMY, INC. UNDER CONTRACT WITH NATIONAL SCIENCE FOUNDATION</small>	
NEXT ASSEMBLY 2150.340-E002	NAME SPACER-ENCODER ADAPTER	REF FILE 1186	DWG CL	
SCALE 1/1	DESIGNED BY GRIFFITH	DATE 2-11-77	APPROVED BY <i>[Signature]</i>	DATE 4/28/77
PRINT ISSUED	DRAWN BY GRIFFITH	DATE 2-11-77	APPROVED BY	DATE
	CHECKED BY	DATE	APPROVED BY <i>[Signature]</i>	DATE
			DWG NO. 2150.340-C048	REV
			RELEASE DATE 11-7-1977	