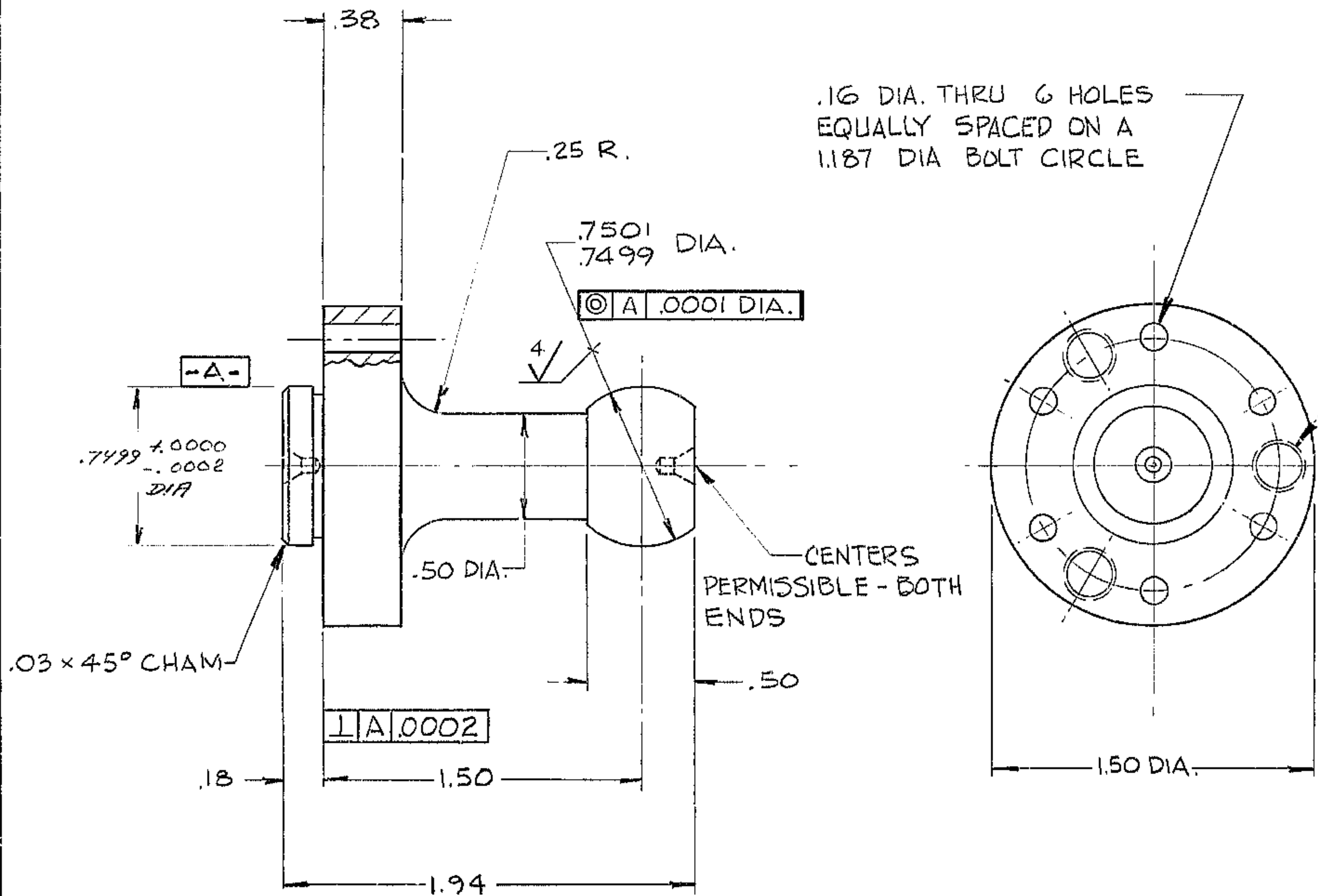


BILL OF MATERIAL

ITEM	QTY.	MATERIAL	DESCRIPTION	WEIGHT
				.43



.250-28 UNF-2B
3 HOLES EQUALLY SPACED ON
A 1.19 DIA B.C.

.16 DIA. THRU 6 HOLES
EQUALLY SPACED ON A
1.187 DIA BOLT CIRCLE

- 8- MATL: TOOL STEEL O1 OR O2
- 7- HEAT TREAT R/C 56-58
- 6- INTERPRET DWG PER USAS1-Y14.5-1966
- 5-BREAK SHARP EDGES .03
- 4-IDENTIFY BY TAG AT LOCATION "MADE IN U.S.A."
- 3-~~STAMP MATCH MARKS ON ALL MATING PARTS WHERE NECESSARY.~~
- 2-PROJECT DRAWINGS
- 1-FOR NEXT ASSY. SEE 2150.340 E 002 & 2150.340-E100

TOLERANCES UNLESS OTHERWISE NOTED				
DECIMAL DIMENSIONS 00.00 ± .010 00.000 ± .003				
FRACTIONAL DIMENSIONS UP TO 18' ± 1/64 18' TO 50' ± 1/32 50' & OVER ± 1/16				
ANGLES ± 0°-30'				
ALL SURFACES TO HAVE 125/ FINISH UNLESS OTHERWISE NOTED.				
REV.	REVISION	ECR	DATE	BY
B	.7499 DIA W/RE .7500 DIA REF	2718	10-13-83	GD
A	ADDED H/A 2150.340-E100	2718	7-6-79	JK

KITT PEAK NATIONAL OBSERVATORY
OPERATED BY THE ASSOCIATION OF UNIVERSITIES FOR RESEARCH IN ASTRONOMY, INC.
UNDER CONTRACT WITH NATIONAL SCIENCE FOUNDATION

150" STELLAR TELESCOPE REF. FILE 1186

NAME FOLLOWER SCALE 2/1 PRINT ISSUED

DESIGNED BY	DATE	APPROVED BY	DATE	DRAWING NUMBER	REV.
DRAWN BY PARNES	DATE 8-24-71	APPROVED BY [Signature]	DATE 10/10/71	2150.340.0020	B
CHECKED BY CHADSO	DATE 10-14-71	APPROVED BY [Signature]	DATE 10-14-71		