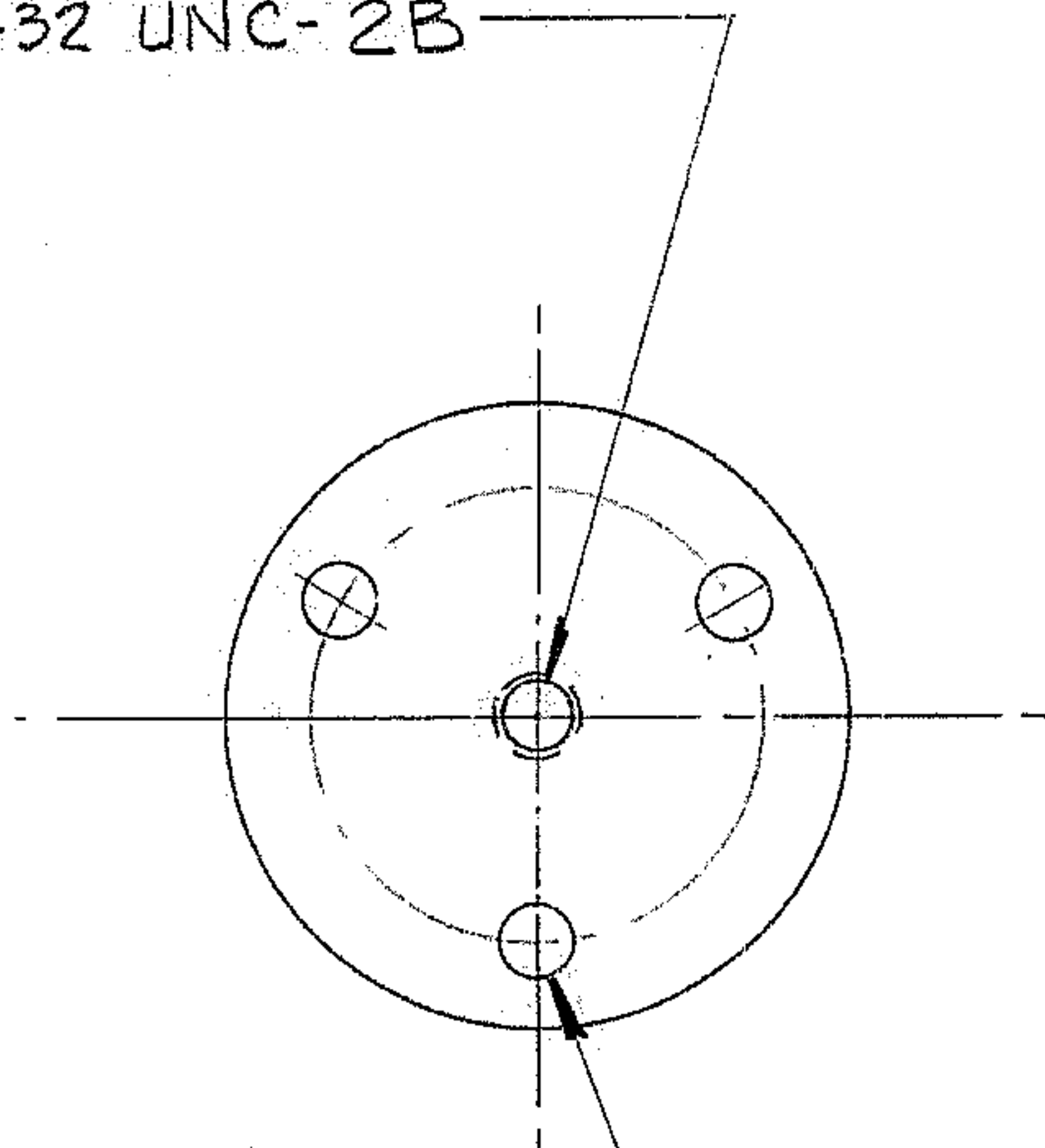
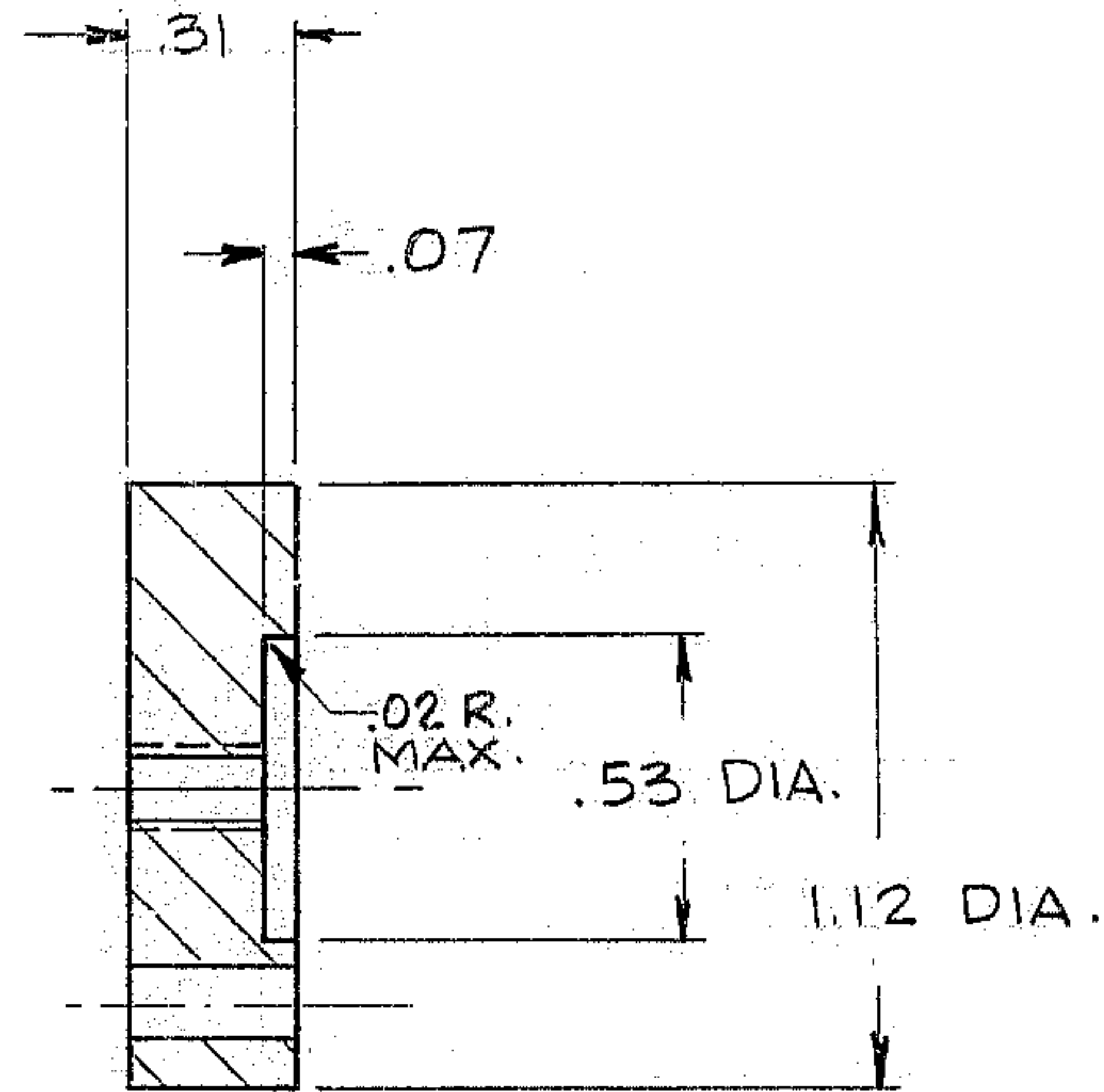


8-32 UNC-2B



.14 DIA THRU 3 HOLES  
EQUALLY SPACED ON AN  
.81 DIA BOLT CIRCLE



8. MATL: STEEL  
 7. DIMENSIONS AFTER PLATING.  
 6. CD PLATE PER QQ-P-416 TYPE II, CL 3.  
 5. INTERPRET DWG PER USASI-Y14.5-1966.  
 4. BREAK SHARP EDGES .03.  
 3. IDENTIFY BY TAG AT LOCATION 3, "AURA INC MADE IN U.S.A."  
~~2. STAMP MATCH MARKS ON ALL MATING PARTS WHERE NECESSARY.~~  
 1. FOR NEXT ASSY. SEE 2150.340 E 002
- NOTES:

					<b>TOLERANCES UNLESS OTHERWISE NOTED.</b> DECIMAL DIMENSIONS 00.00 ± .010 00.000 ± .003 FRACTIONAL DIMENSIONS UP TO 18" ± 1/64 18" TO 50" ± 1/32 50" & OVER ± 1/16 BREAK SHARP EDGES ALL SURFACES TO HAVE 125 FINISH UNLESS OTHERWISE NOTED.		<b>KITT PEAK NATIONAL OBSERVATORY</b> OPERATED BY THE ASSOCIATION OF UNIVERSITIES FOR RESEARCH IN ASTRONOMY, INC. UNDER CONTRACT WITH NATIONAL SCIENCE FOUNDATION	
					150" STELLAR TELESCOPE		REF. FILE 1186	
					NAME WORM GEAR CAP		SCALE 2/1 PRINT ISSUED	
DES'D BY		DATE		APP'D BY		DATE		
BY PARNES		8-24-71		BY BARR		10-19-71		
LET.		REVISION ON		ECR		DATE		
				BY CHADD		10-19-71		
				DATE		DRAWING NUMBER		
				BY EG		2150.340 B044		
				DATE		REV.		
				10-19-71				