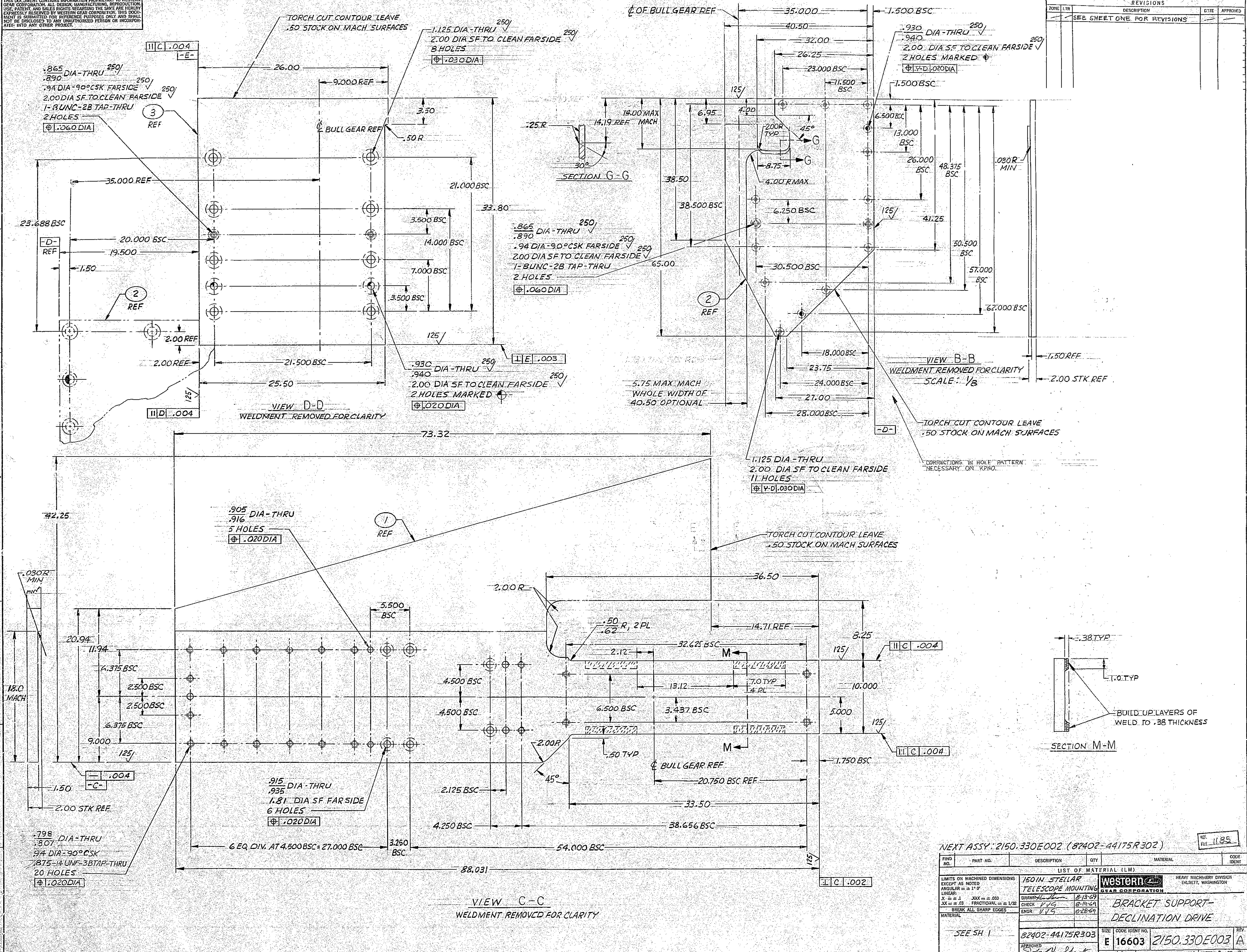


THIS DOCUMENT CONTAINS INFORMATION PROPRIETARY TO WESTERN GEAR CORPORATION. ALL DESIGN, MANUFACTURING, REPRODUCTION, USE, PATENT AND SALES RIGHTS REGARDING THE SAME ARE HEREBY EXPRESSLY RESERVED BY WESTERN GEAR CORPORATION. THIS DOCUMENT IS SUBMITTED FOR INSPECTION PURPOSES ONLY AND SHALL NOT BE DISCLOSED TO ANY UNAUTHORIZED PERSON OR INCORPORATED INTO ANY OTHER PROJECT.

REVISIONS		DATE	APPROVED
ZONE	LTR		
SEE SHEET ONE FOR REVISIONS			



NEXT ASSY: 2150.330E002 (82402-44175R302)

FIND NO.	PART NO.	DESCRIPTION	QTY	MATERIAL	CODE IDENT
LIST OF MATERIAL (LM)					
LIMITS ON MACHINED DIMENSIONS EXCEPT AS NOTED					
ANGULAR = ± 1°					
LINEAR:					
XXX = ± .010					
XX = ± .03 FRACTIONAL = ± 1/32					
BREAK ALL SHARP EDGES					
MATERIAL					
150 IN STELLAR TELESCOPE MOUNTING					
DRAWN: [Signature] 8/13/69					
CHECK: VVG 8-19-69					
ENGR: VVG 8-28-69					
MATERIAL					
SEE SH 1					
82402-44175R303					
APPROVED: [Signature]					
SCALE: 1/4" = 1"					
WESTERN GEAR CORPORATION HEAVY MACHINERY DIVISION ELYRETT, WASHINGTON					
BRACKET SUPPORT-DECLINATION DRIVE					
SIZE: CODE IDENT NO. 2150.330E003 A					
REV: E 16603					
SCALE: 1/4" = 1"					
18 SHEET 3 OF 3					

SH 3 REV A 44175R303