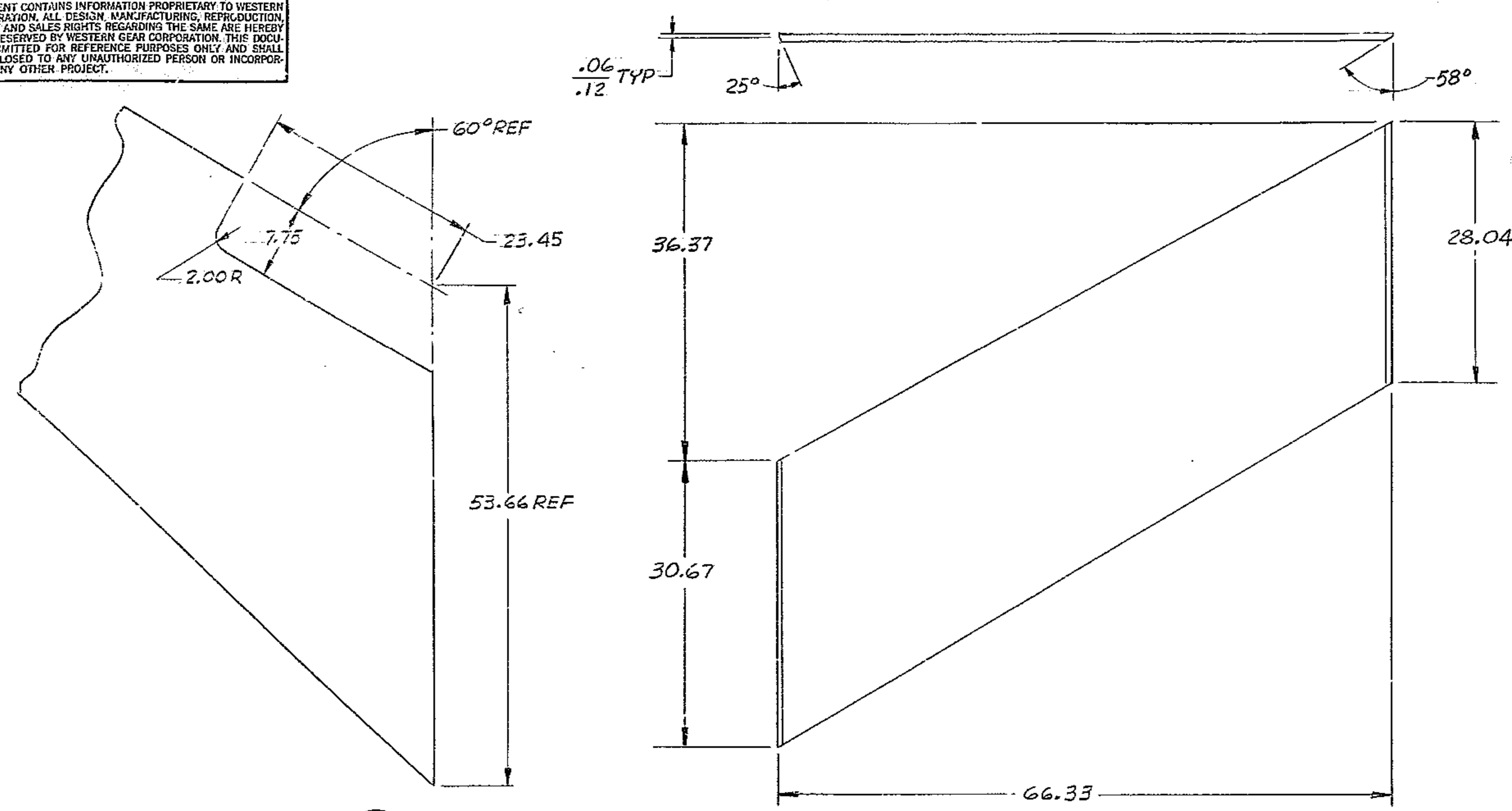
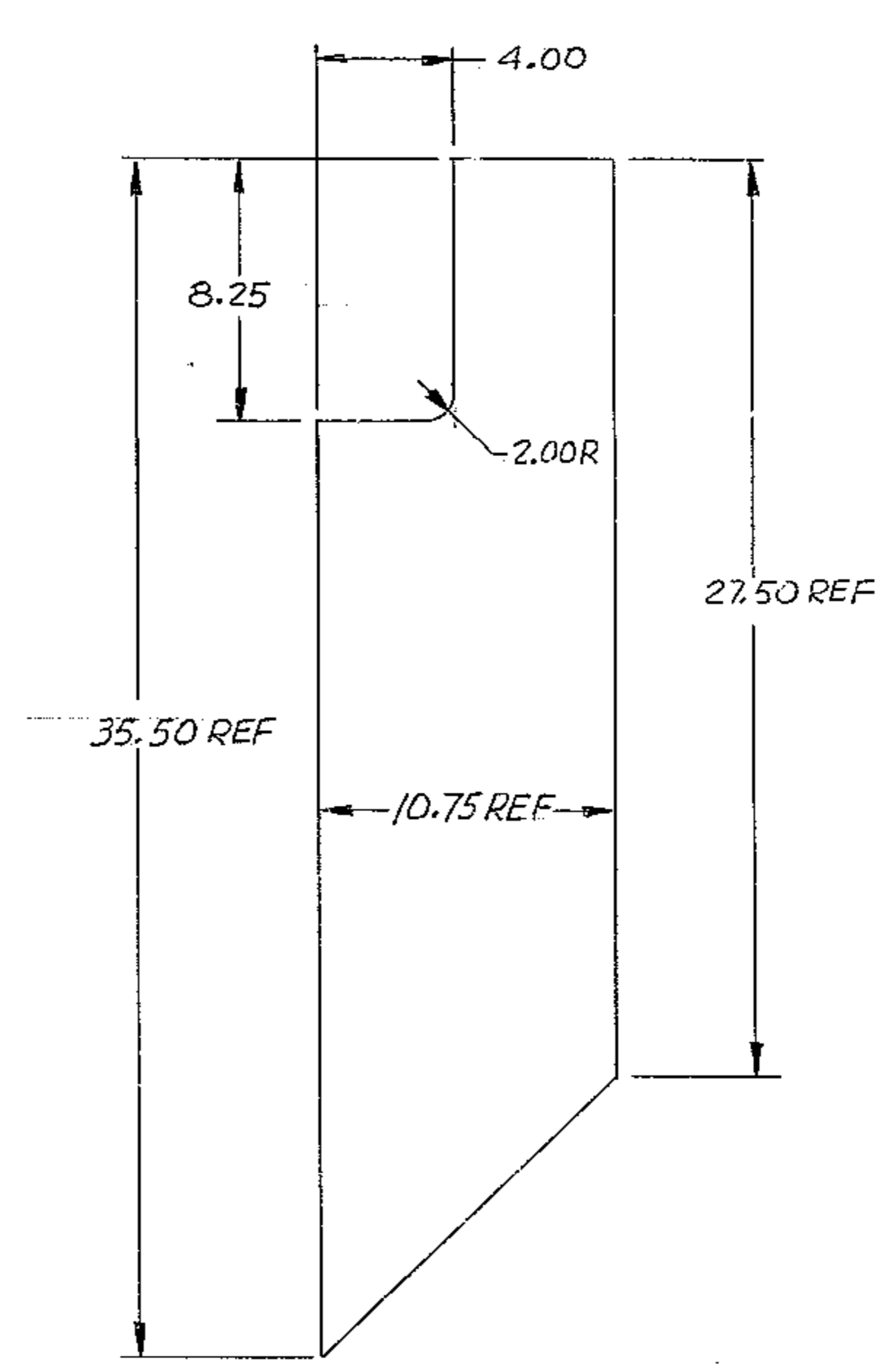


THIS DOCUMENT CONTAINS INFORMATION PROPRIETARY TO WESTERN GEAR CORPORATION. ALL DESIGN, MANUFACTURING, REPRODUCTION, USE, PATENT, AND SALES RIGHTS REGARDING THE SAME ARE HEREBY EXPRESSLY RESERVED BY WESTERN GEAR CORPORATION. THIS DOCUMENT IS SUBMITTED FOR REFERENCE PURPOSES ONLY AND SHALL NOT BE DISCLOSED TO ANY UNAUTHORIZED PERSON OR INCORPORATED INTO ANY OTHER PROJECT.

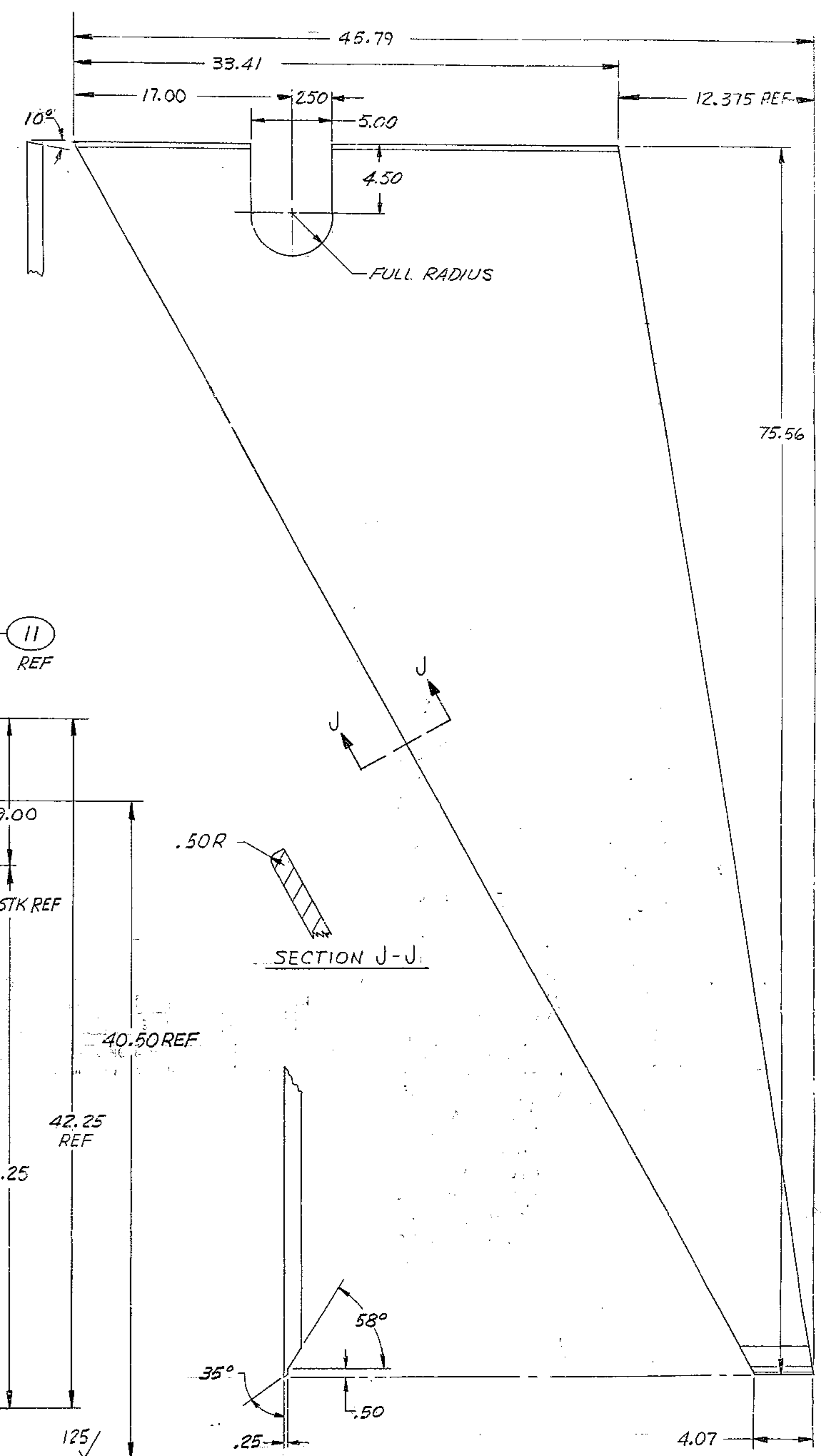
REVISIONS			
ZONE	LTR	DESCRIPTION	DATE
		SEE SHEET ONE FOR REVISIONS	



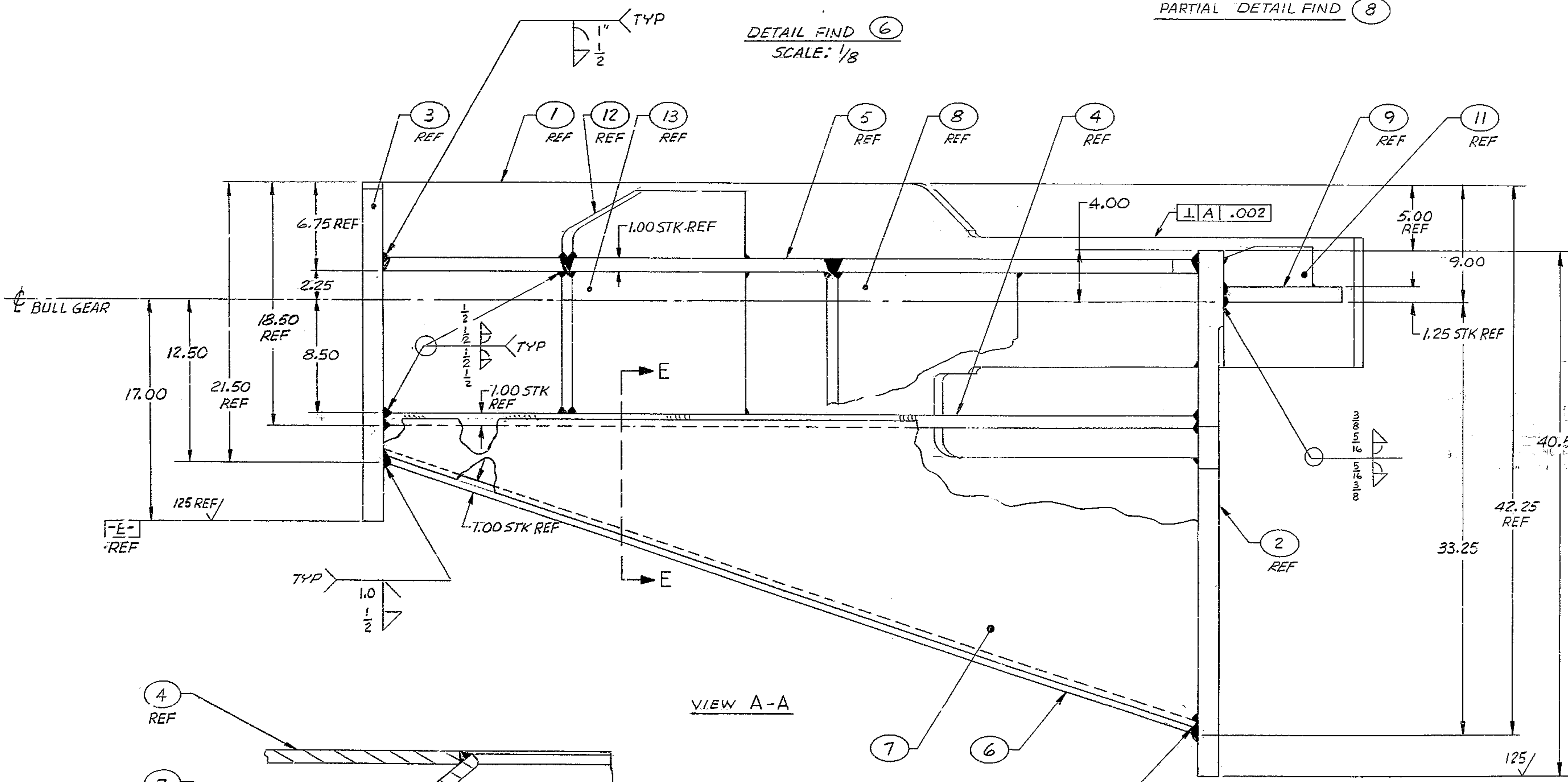
PARTIAL DETAIL FIND 4
SCALE: 1/8



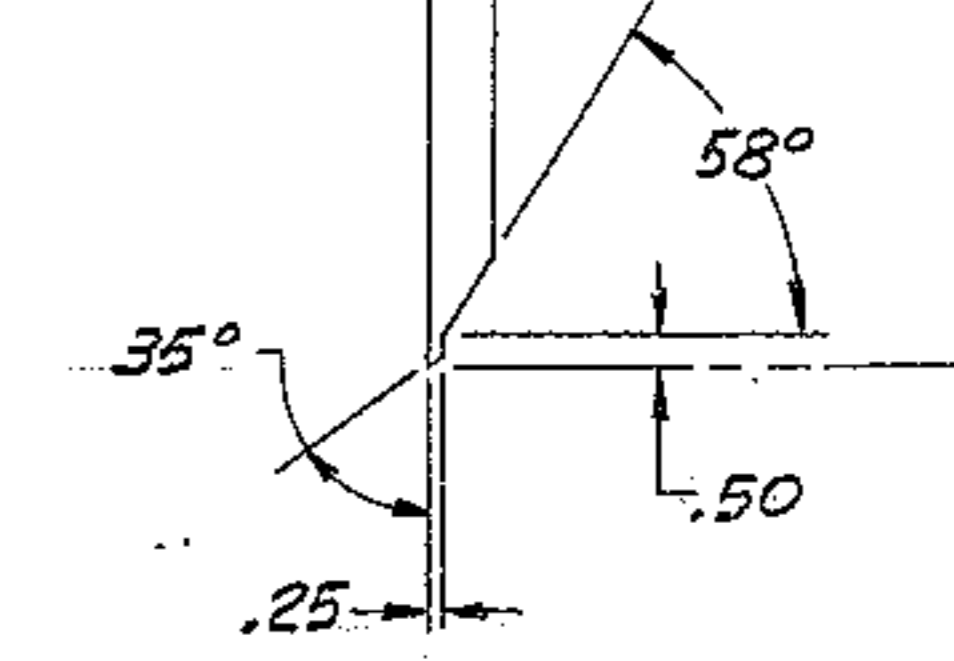
PARTIAL DETAIL FIND 8



SECTION J-J



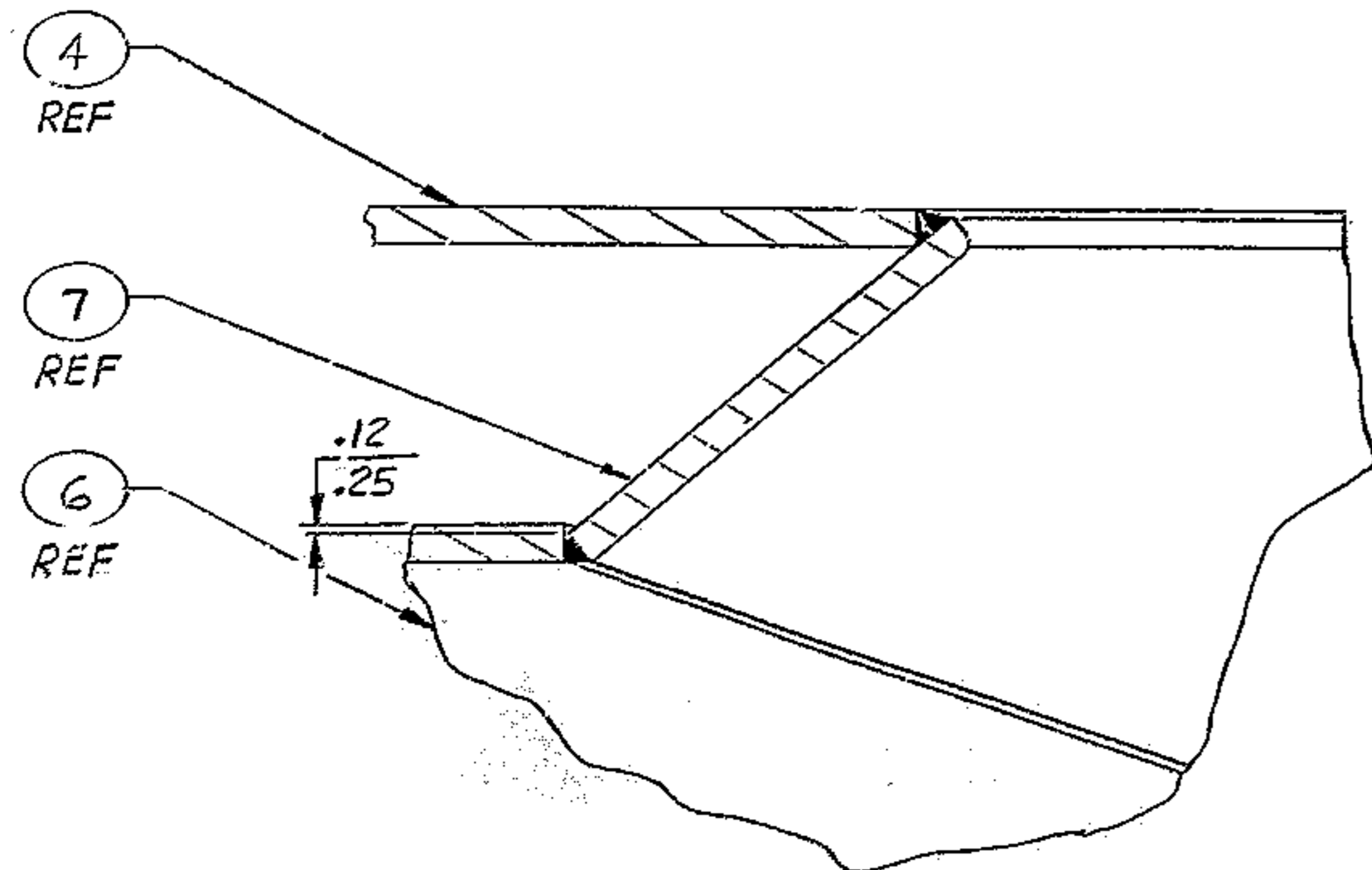
VIEW A-A



DETAIL FIND 7
SCARFING TO BE DONE BY W.G.C.
WELD SHOP

NEXT ASSY: 2150.330E002 (82402-44175R302)

FIND NO.	PART NO.	DESCRIPTION	QTY	MATERIAL	CODE IDENT
		LIST OF MATERIAL (LM)			
LIMITS ON MACHINED DIMENSIONS EXCEPT AS NOTED					
ANGULAR = ± 1°					
LINEAR:					
XX = ± .1 XXX = ± .010					
XXX = ± .03 FRACTIONAL = ± 1/32					
CHECK VVG 8-13-69					
CHECK VVG 10-28-69					
ENGR VVG 10-28-69					
BREAK ALL SHARP EDGES					
MATERIAL					
SEE SH 1					
82402-44175R303					
APPROVED: <i>[Signature]</i>					
SCALE 1/4					
WESTERN GEAR CORPORATION HEAVY MACHINERY DIVISION EVERETT, WASHINGTON					
BRACKET SUPPORT-DECLINATION DRIVE					
SIZE CODE IDENT NO. 2150.330E003					
E 16603					
SCALE 1/4					
SH2 REV A					
44175R303					



SECTION E-E