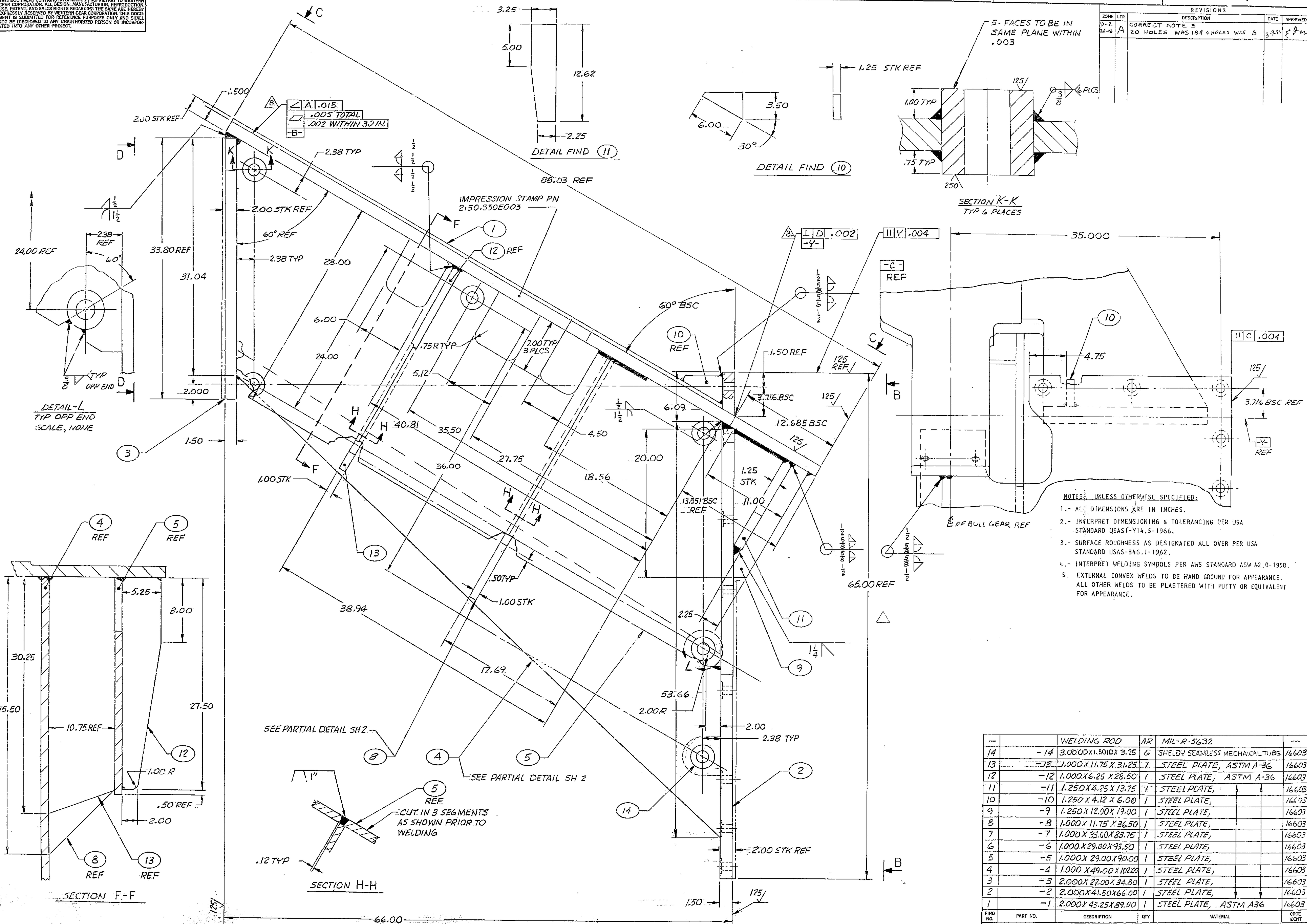


THIS DOCUMENT CONTAINS INFORMATION PROPRIETARY TO WESTERN GEAR CORPORATION. ALL DESIGN, MANUFACTURING, REPRODUCTION, USE, PATENT, AND SALES RIGHTS REGARDING THE SAME ARE HEREBY EXPRESSLY RESERVED BY WESTERN GEAR CORPORATION. THIS DOCUMENT IS SUBMITTED FOR REFERENCE PURPOSES ONLY AND SHALL NOT BE DISCLOSED TO ANY UNAUTHORIZED PERSON OR INCORPORATED INTO ANY OTHER PROJECT.

REVISIONS				
ZONE	LTR	DESCRIPTION	DATE	APPROVED
D-2	A	CORRECT NOTE 3	3-9-70	E. J. ...
8A-8		20 HOLES WAS 18 & HOLES WAS 3		



- NOTES: UNLESS OTHERWISE SPECIFIED:
- ALL DIMENSIONS ARE IN INCHES.
 - INTERPRET DIMENSIONING & TOLERANCING PER USA STANDARD USAS1-Y14.5-1966.
 - SURFACE ROUGHNESS AS DESIGNATED ALL OVER PER USA STANDARD USAS-846.1-1962.
 - INTERPRET WELDING SYMBOLS PER AWS STANDARD ASW A2.0-1958.
 - EXTERNAL CONVEX WELDS TO BE HAND GROUND FOR APPEARANCE. ALL OTHER WELDS TO BE PLASTERED WITH PUTTY OR EQUIVALENT FOR APPEARANCE.

WELDING ROD	AR	MIL-R-5632		
14	-14	3.000DX1.501DX 3.25	G	SHELBY SEAMLESS MECHANICAL TUBE
13	-13	1.000X11.75X 31.25	I	STEEL PLATE, ASTM A-36
12	-12	1.000X6.25 X 28.50	I	STEEL PLATE, ASTM A-36
11	-11	1.250X4.25 X 13.75	I	STEEL PLATE,
10	-10	1.250 X 4.12 X 6.00	I	STEEL PLATE,
9	-9	1.250 X 12.00 X 19.00	I	STEEL PLATE,
8	-8	1.000 X 11.75 X 36.50	I	STEEL PLATE,
7	-7	1.000 X 33.00 X 83.75	I	STEEL PLATE,
6	-6	1.000 X 29.00 X 93.50	I	STEEL PLATE,
5	-5	1.000 X 29.00 X 90.00	I	STEEL PLATE,
4	-4	1.000 X 49.00 X 102.00	I	STEEL PLATE,
3	-3	2.000 X 27.00 X 34.80	I	STEEL PLATE,
2	-2	2.000 X 41.50 X 66.00	I	STEEL PLATE,
1	-1	2.000 X 43.25 X 89.00	I	STEEL PLATE, ASTM A36

LIST OF MATERIAL (LM)

150 IN STELLAR TELESCOPE MOUNTING

Western GEAR CORPORATION

HEAVY MACHINING DIVISION
EVERETT, WASHINGTON

BRACKET SUPPORT-DECLINATION DRIVE

82402-44175R 303

SIZE CODE IDENT NO. E 16603 2150.330E003

SCALE 1/4" = 1"

REV 3

44175R 303