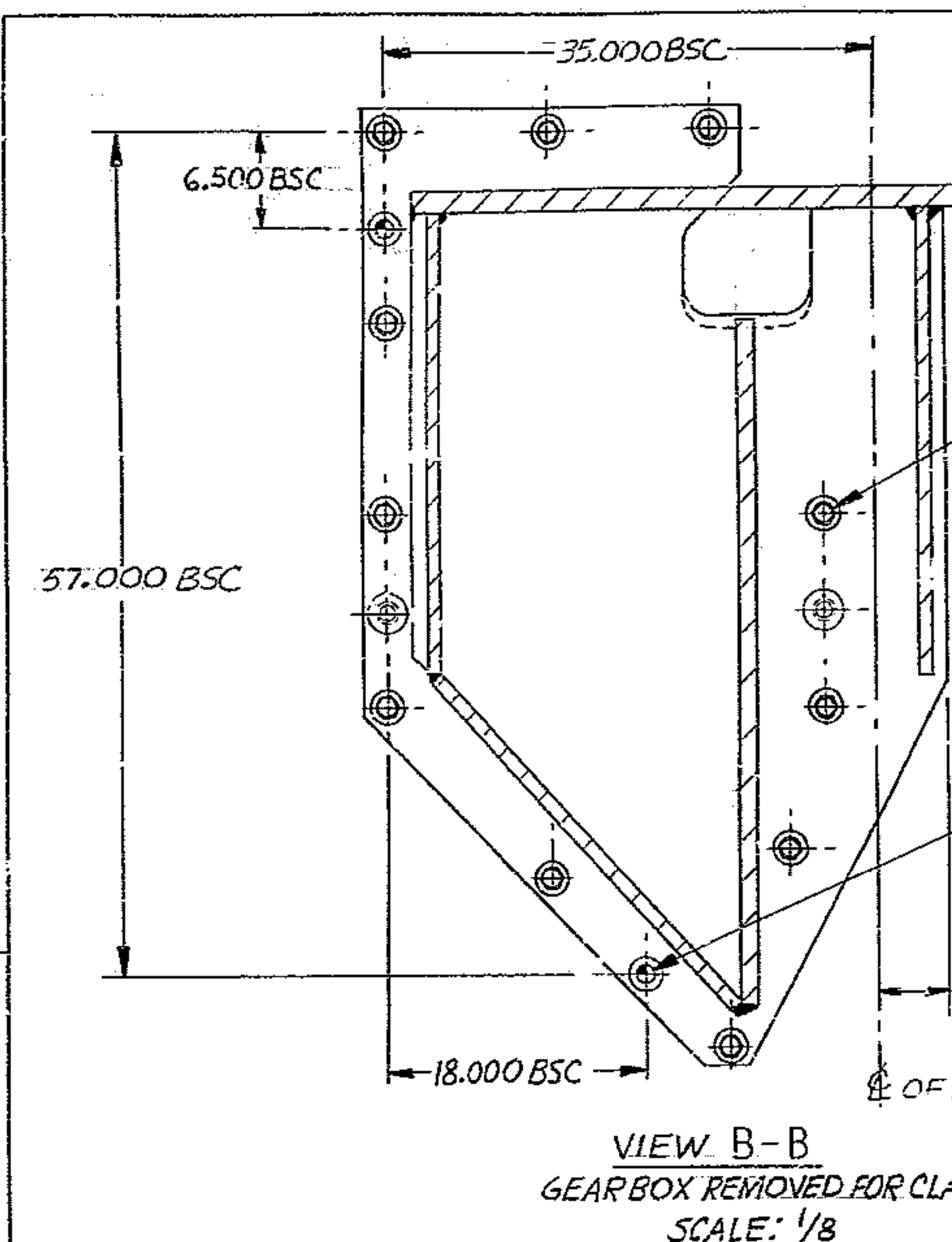
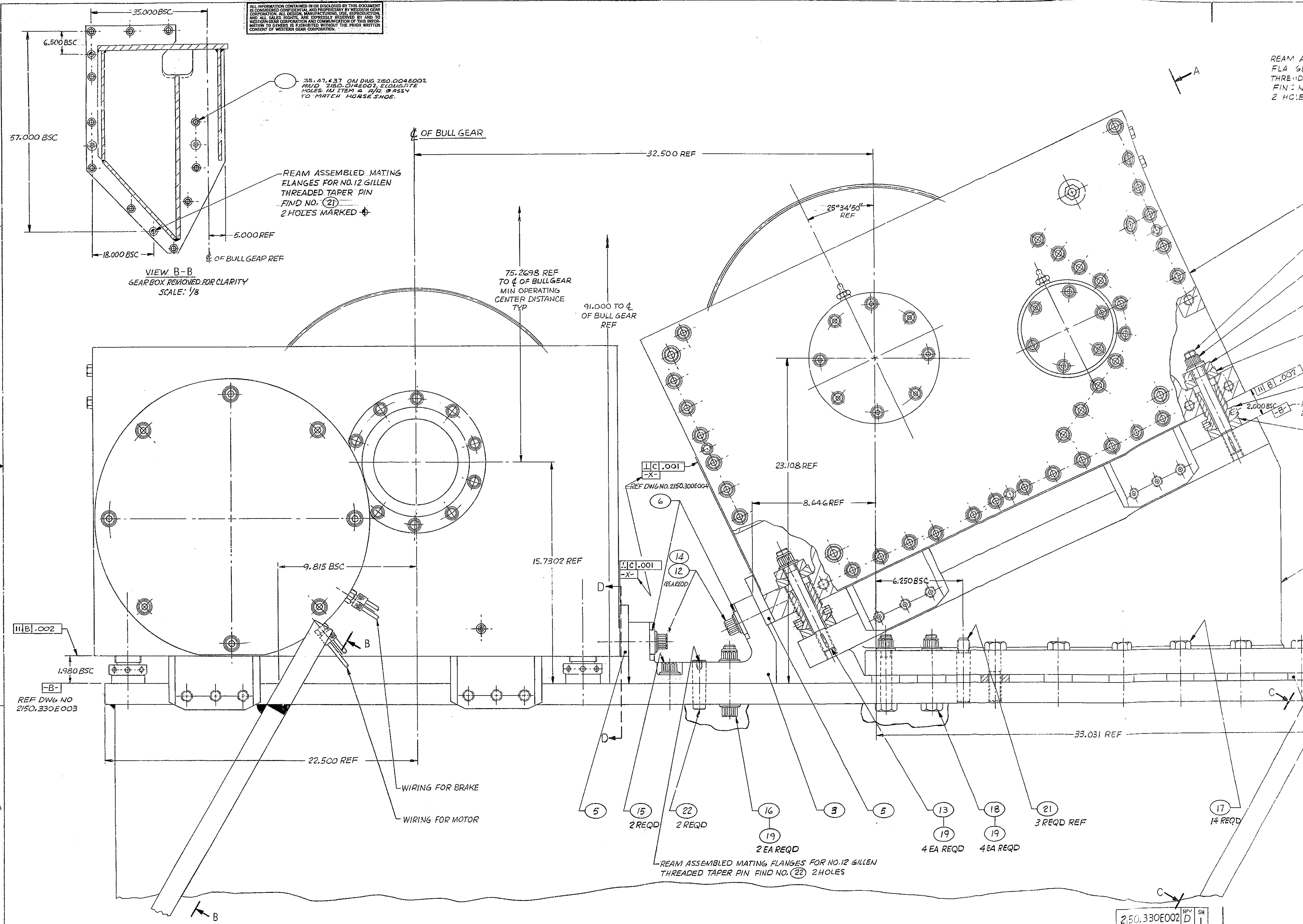


ALL INFORMATION CONTAINED IN OR DISCLOSED BY THIS DOCUMENT IS CONFIDENTIAL AND PROPRIETARY BY WESTERN GEAR CORPORATION. ALL DESIGN, MANUFACTURING, USE, REPRODUCTION AND ALL SALES RIGHTS, ARE EXPRESSLY RESERVED BY AND TO WESTERN GEAR CORPORATION AND COMMUNICATION OF THIS INFORMATION TO OTHERS IS PROHIBITED WITHOUT THE PRIOR WRITTEN CONSENT OF WESTERN GEAR CORPORATION.



35, 47, & 37 ON DWG 2150.004E002
FIND 2150.014E002, ELONGATE
HOLES IN ITEM 4, 1/2 Ø ASSY
TO MATCH HORSE SHOE.

REAM ASSEMBLED MATING
FLANGES FOR NO. 12 GILLEN
THREADED TAPER PIN
FIND NO. (21)
2 HOLES MARKED

75.2698 REF
TO CL OF BULLGEAR
MIN OPERATING
CENTER DISTANCE
TYP

91.000 TO CL
OF BULLGEAR
REF

15.7302 REF

III B .002

1.980 BSC

REF DWG NO
2150.330E003

22.500 REF

WIRING FOR BRAKE

WIRING FOR MOTOR

11 C .001
-X-

REF DWG NO. 2150.300E004

11 C .001
-X-

BEARER

5
15 2 REQD

22 2 REQD

16
19 2 EA REQD

3
5

13
19 4 EA REQD

18
19 4 EA REQD

21 3 REQD REF

17 14 REQD

REAM ASSEMBLED MATING FLANGES FOR NO. 12 GILLEN
THREADED TAPER PIN FIND NO. (22) 2 HOLES

REAM ASS
FLA GES
THREADED
FIN : NO.
2 HOLES