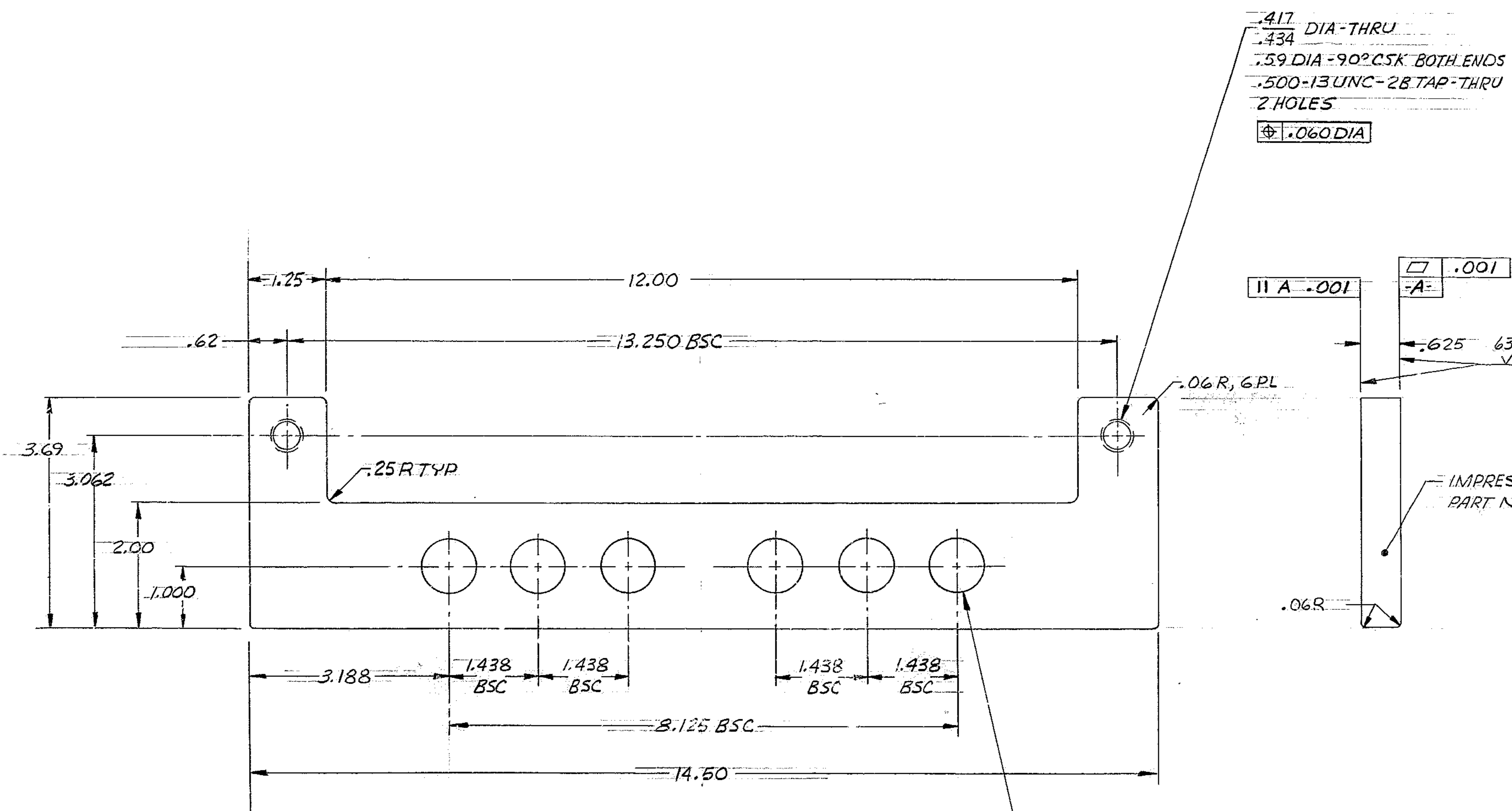


THIS DOCUMENT CONTAINS INFORMATION PROPRIETARY TO WESTERN GEAR CORPORATION. ALL DESIGN, MANUFACTURING, REPRODUCTION, USE, PATENT AND SALES RIGHTS REGARDING THE SAME ARE HEREBY EXPRESSLY RESERVED BY WESTERN GEAR CORPORATION. THIS DOCUMENT IS SUBMITTED FOR REFERENCE PURPOSES ONLY AND SHALL NOT BE DISCLOSED TO ANY UNAUTHORIZED PERSON OR INCORPORATED INTO ANY OTHER PROJECT.

REVISIONS				
ZONE	LTR	DESCRIPTION	DATE	APPROVED
A-3	A	MAT'L WAS AISI-C1018-1025	3-9-70	<i>CB</i>



.417 DIA-THRU
 .434
 .59 DIA-90° CSK BOTH ENDS
 .500-13 UNC-2B TAP-THRU
 2 HOLES
 .060 DIA

11 A -.001
 .001
 .625 63/

.06 R, 6 PL
 IMPRESSION STAMP
 PART NO. 2150.330 D006
 .06 R

- NOTES: UNLESS OTHERWISE SPECIFIED:
- 1.- ALL DIMENSIONS ARE IN INCHES.
 - 2.- INTERPRET DIMENSIONING & TOLERANCING PER USA STANDARD USAS1-Y14.5-1966.
 - 3.- SURFACE ROUGHNESS 125/ ALL OVER PER USA STANDARD USAS-B46.1-1962.

.790 DIA-THRU
 .810
 6 HOLES
 .020 DIA

NEXT ASSY: 2150.330 E 002 (82402-44175R302)
 USED ON: 2150.320 E 002 (82402-44175R202)

FIND NO.	PART NO.	DESCRIPTION	QTY	MATERIAL	CODE IDENT
LIST OF MATERIAL (LM)					
LIMITS ON MACHINED DIMENSIONS EXCEPT AS NOTED		150 IN STELLAR TELESCOPE MTG			
ANGULAR = ± 1° 0'		WESTERN HEAVY MACHINERY DIVISION EVERETT, WASHINGTON			
LINEAR:		DRAWN <i>W. J. ...</i> 8-15-69			
X = ± .1		CHECK <i>W. J. ...</i> 8-19-69			
XX = ± .03		ENGR <i>W. J. ...</i> 9-30-69			
BREAK ALL SHARP EDGES		SPACER-R.A. AND D.A. MOUNTING			
MATERIAL		STEEL-PL ASTM A36 OR A7			
SIZE		82402-44175E 306			
CODE IDENT NO.		D 16603 2150.330 D006 A			
APPROVED		<i>JR</i>			
SCALE 1/1		WT LB SHEET 1 OF 1			

2150.330 D006

1185