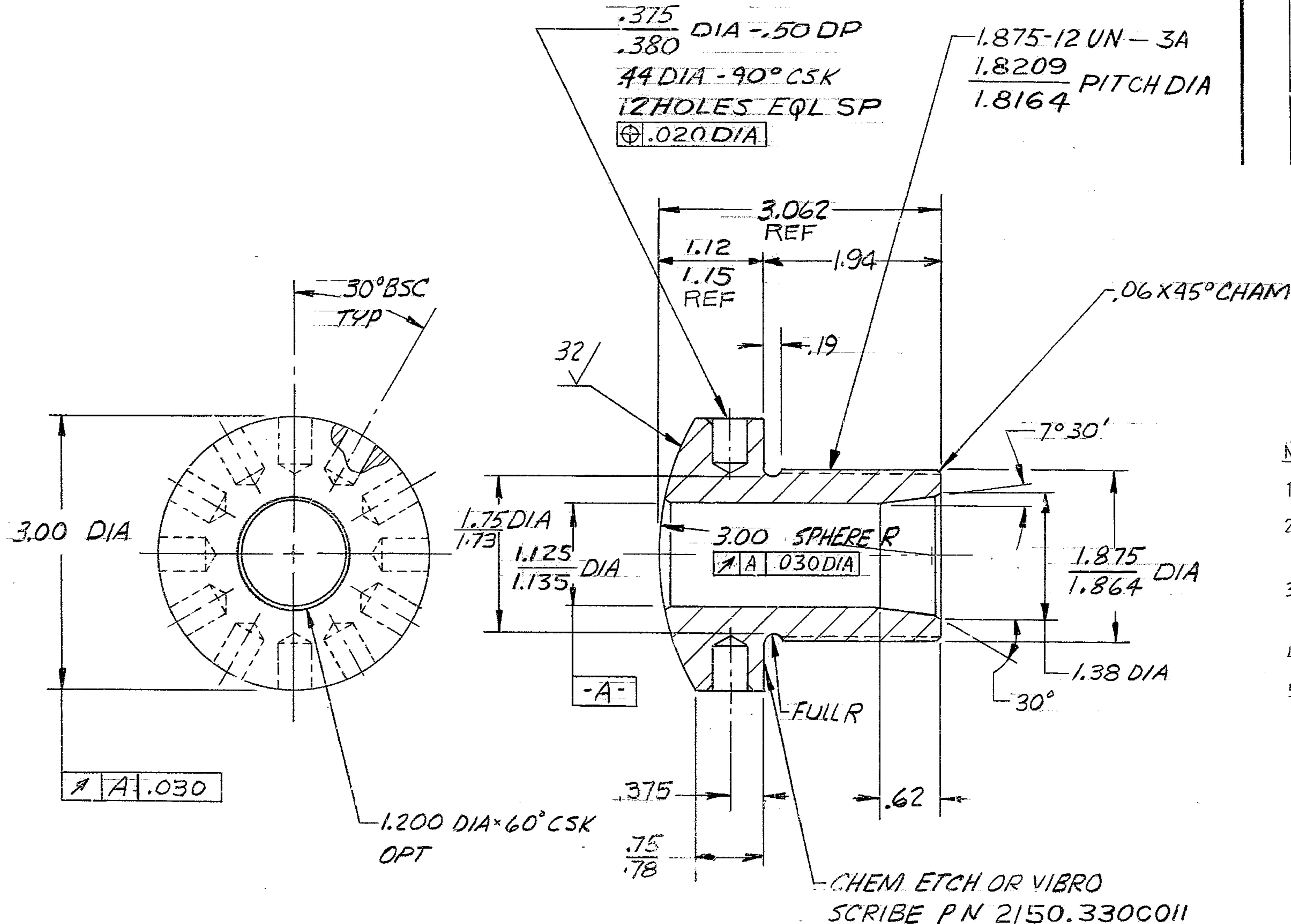


THIS DOCUMENT CONTAINS INFORMATION PROPRIETARY TO WESTERN GEAR CORPORATION. ALL DESIGN, MANUFACTURING, REPRODUCTION, USE, PATENT AND SALES RIGHTS REGARDING THE SAME ARE HEREBY EXPRESSLY RESERVED BY WESTERN GEAR CORPORATION. THIS DOCUMENT IS SUBMITTED FOR REFERENCE PURPOSES ONLY AND SHALL NOT BE DISCLOSED TO ANY UNAUTHORIZED PERSON OR INCORPORATED INTO ANY OTHER PROJECT.

REVISIONS				
ZONE	LTR	DESCRIPTION	DATE	APPROVED



- NOTES: UNLESS OTHERWISE SPECIFIED:
- ALL DIMENSIONS ARE IN INCHES,
 - INTERPRET DIMENSIONING & TOLERANCING PER USA STANDARD USASI-Y14.5-1966.
 - SURFACE ROUGHNESS 125/ ALL OVER PER USA STANDARD USAS-B46.1-1962.
 - HEAT TREAT: R_C 32 TO 36 PER MIL-H-6875.
 - CONTACT PATTERN ON SPHERICAL SURFACE TO BE 80% WHEN IN CONTACT WITH SPHERICAL SURFACE OF PART NO. 2150.330B013. MATCH MARK & FURNISH AS SET.

NEXT ASSY: 2150.330E002 (82402-44175R 302)

FILE 1185

FIND NO.	PART NO.	DESCRIPTION	QTY	MATERIAL	CODE IDENT
LIST OF MATERIAL (LM)					
LIMITS ON MACHINED DIMENSIONS EXCEPT AS NOTED		150 IN STELLAR		WESTERN HEAVY MACHINERY DIVISION GEAR CORPORATION EVERETT, WASHINGTON	
ANGULAR = ± 1° 0'		TELESCOPE MOUNTING			
LINEAR:		DRAWN <i>Anderson</i> 8-18-69		SHAFT, THREADED, ALIGNMENT DRIVE GEARBOX	
.X = ± .1 .XXX = ± .010		CHECK <i>VVG</i> 10-16-69			
.XX = ± .03 FRACTIONAL = ± 1/32		ENGR <i>VVG</i> 10-16-69			
BREAK ALL SHARP EDGES					
MATERIAL		4340 STL BAR QQ-5-624		SIZE C CODE IDENT NO. 16603 2150.330C011 REV	
APPROVED <i>[Signature]</i>		82402-44175D311		SCALE 1/1 WT LB SHEET 1 OF 1	

REV *[Symbol]*

44175 D 311