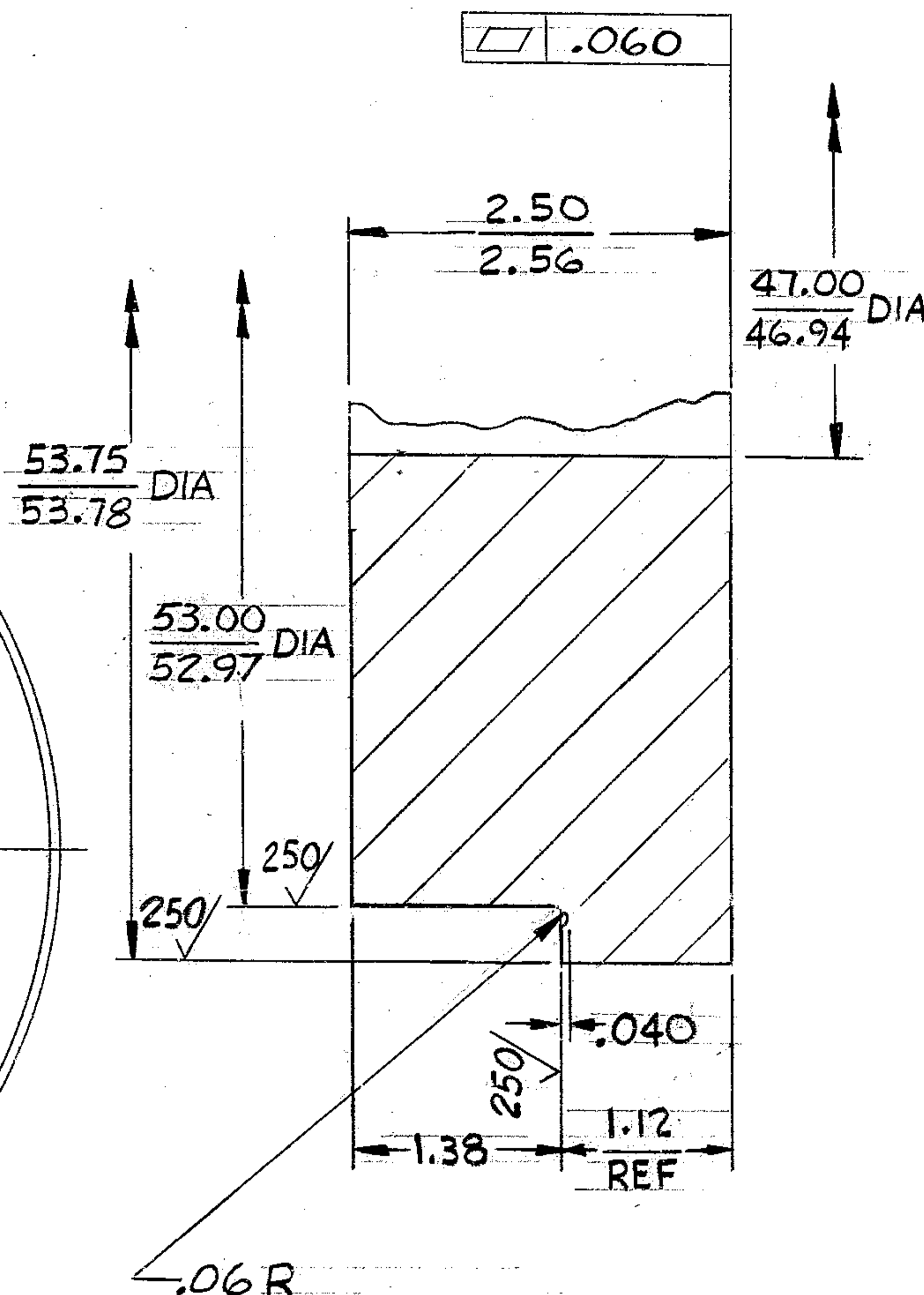
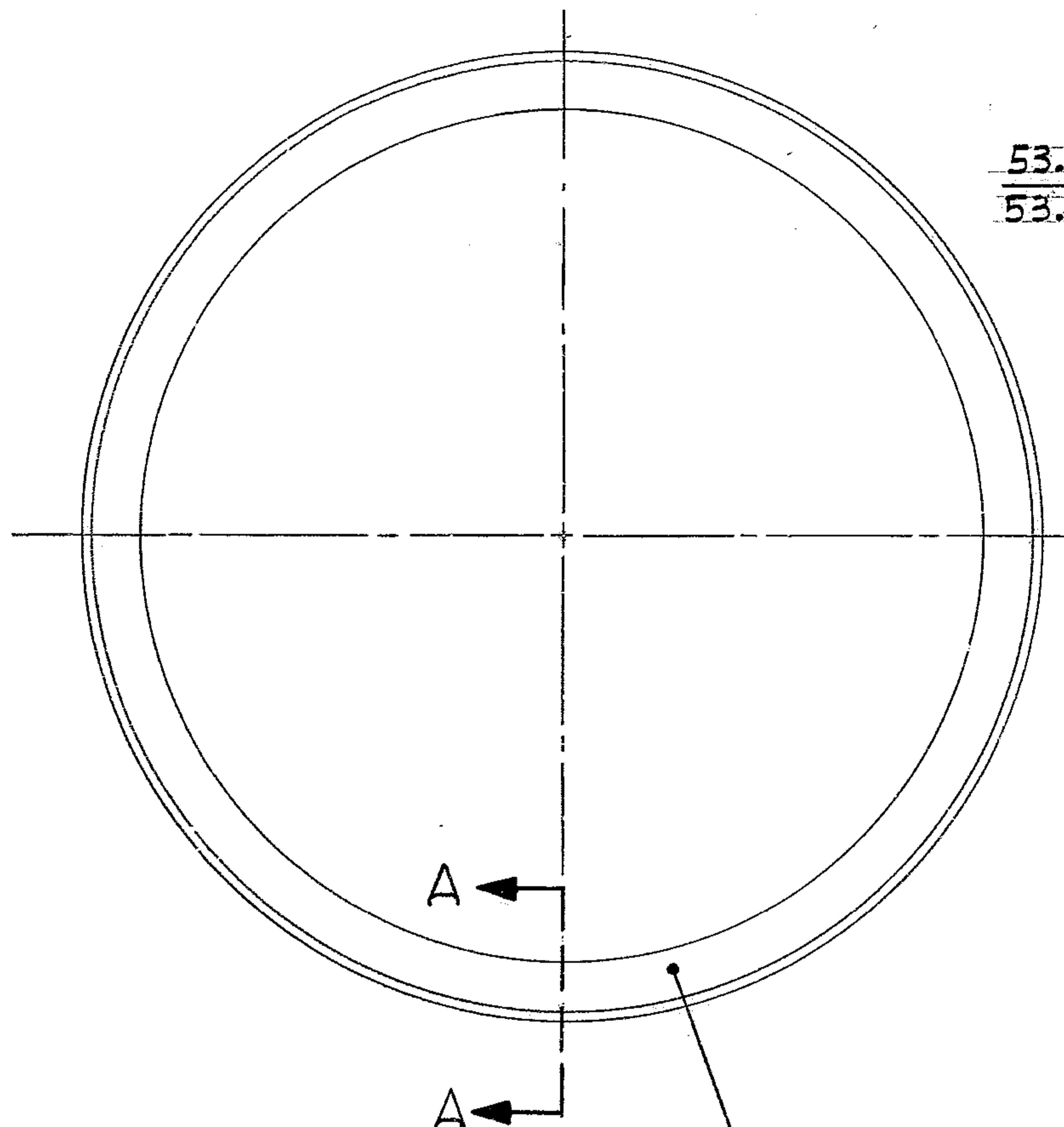


THIS DOCUMENT CONTAINS INFORMATION PROPRIETARY TO WESTERN GEAR CORPORATION. ALL DESIGN, MANUFACTURING, REPRODUCTION, USE, PATENT AND SALES RIGHTS REGARDING THE SAME ARE HEREBY EXPRESSLY RESERVED BY WESTERN GEAR CORPORATION. THIS DOCUMENT IS SUBMITTED FOR REFERENCE PURPOSES ONLY AND SHALL NOT BE DISCLOSED TO ANY UNAUTHORIZED PERSON OR INCORPORATED INTO ANY OTHER PROJECT.

REVISIONS				
ZONE	LTR	DESCRIPTION	DATE	APPROVED



NOTES: UNLESS OTHERWISE SPECIFIED:

- ALL DIMENSIONS ARE IN INCHES.
- INTERPRET DIMENSIONING AND TOLERANCING PER USA STANDARD USAS1-Y14.5-1966.
- SURFACE ROUGHNESS 500 ALL OVER PER USA STANDARD USAS-B46.1-1962.

SECTION A-A
SCALE: 1/1

CHEM ETCH OR VIBRO SCRIBE
PN 2150.310C005

NEXT ASSY: 2150.310E003(82402-44175R103)

FILE 1183

FIND NO.	PART NO.	DESCRIPTION	QTY	MATERIAL	CODE IDENT
LIST OF MATERIAL (LM)					
LIMITS ON MACHINED DIMENSIONS EXCEPT AS NOTED ANGULAR = ± 1° 0'		150 IN. STELLAR TELESCOPE MTG		WESTERN HEAVY MACHINERY DIVISION <small>GEAR CORPORATION</small> EVERETT, WASHINGTON	
LINEAR: X = ± .1 .XXX = ± .010 .XX = ± .03 FRACTIONAL = ± 1/32		DRAWN <i>F. L. Bell</i> 9-9-69 CHECK <i>VVG</i> 10-20-69 ENGR <i>VVG</i> 10-20-69	HUB, R.A - WEB ASSY, BULL GEAR		
BREAK ALL SHARP EDGES		MATERIAL		SIZE	CODE IDENT NO.
STEEL PLATE		ASTM A-36		C	16603
MATERIAL		82402-44175D105		2150.310C005	
APPROVED <i>John H. Hunt</i>		REV		SCALE 1/8	WT —
				LB	SHEET 1 OF 1

2150.310C005