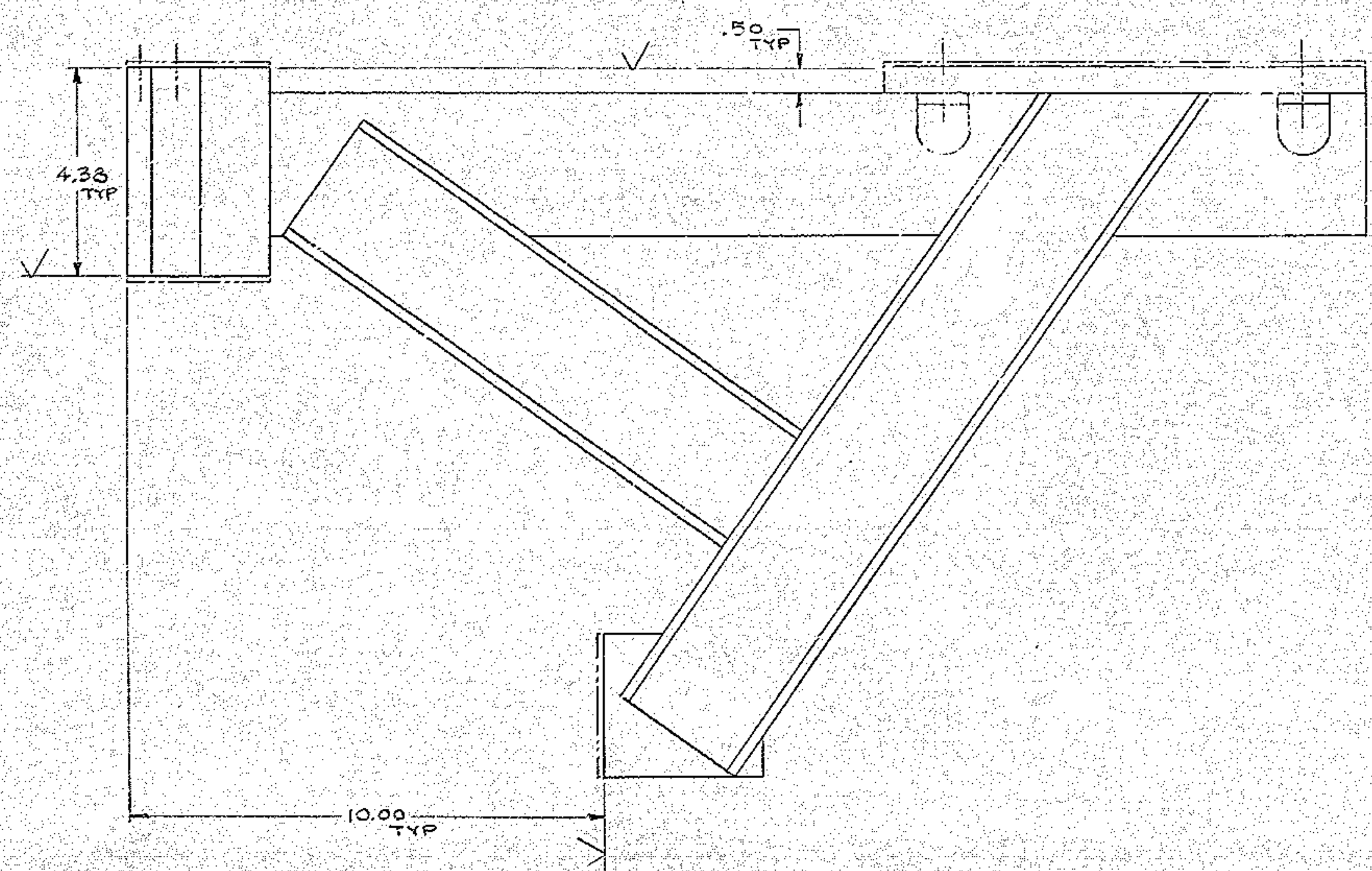
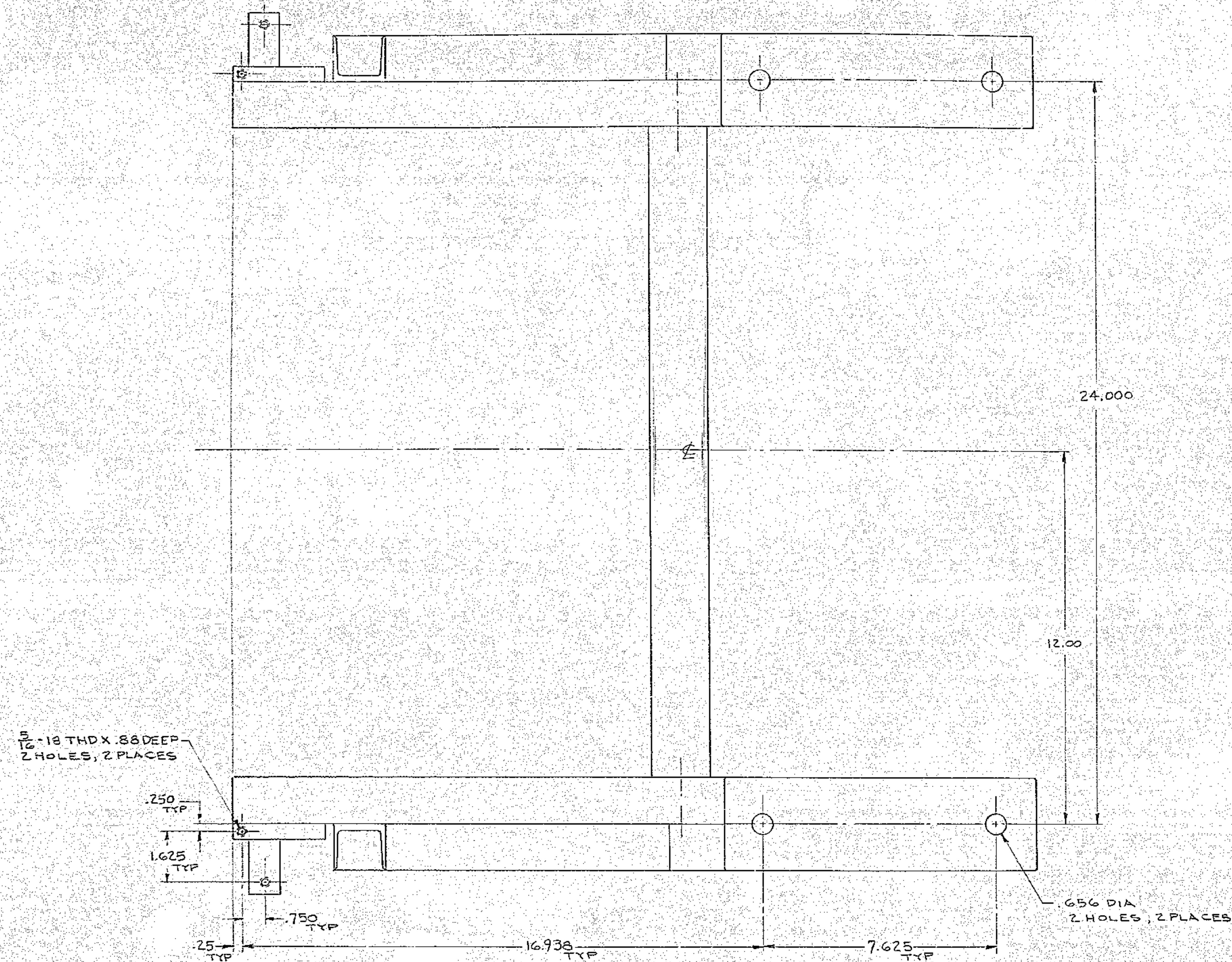


NOTES: UNLESS OTHERWISE NOTED
 1. REMOVE ALL BURRS AND SHARP EDGES R_{MAX}
 2. MACHINED SURFACE ROUGHNESS $125 \sqrt{\text{IN}}$

REVISIONS						
ZONE	LTR	DESCRIPTION	EQN	DATE	BY	APP'D
1	A	CHG'D R.F.N. NO. FROM 1145 TO 1146		1863	5-17-73	L-3



QTY REQD	PART OR IDENTIFYING NO.	DESCRIPTION	MATERIAL/SPECIFICATION	ITEM NO.
PARTS LIST				
TOLERANCES UNLESS OTHERWISE NOTED DECIMALS FRACTIONS .XX ± .03 ± — .XXX ± .010 ANGULAR ± 0° 30'				
KITT PEAK NATIONAL OBSERVATORY <small>OPERATED BY THE ASSOCIATION OF UNIVERSITIES FOR RESEARCH IN ASTRONOMY, INC. UNDER CONTRACT WITH NATIONAL SCIENCE FOUNDATION</small>				
NEXT ASSEMBLY 2150.300-E102		NAME MOUNTING BRACKET DAMPER ASSY. RA DRIVE		REF FILE 1182
SCALE 1/2 = 1		DESIGNED BY DATE	APPROVED BY DATE	DWG NO. 2150.300-E106 REV A
PRINT ISSUED		CHECKED BY DATE	APPROVED BY DATE	RELEASE DATE 10-22-73