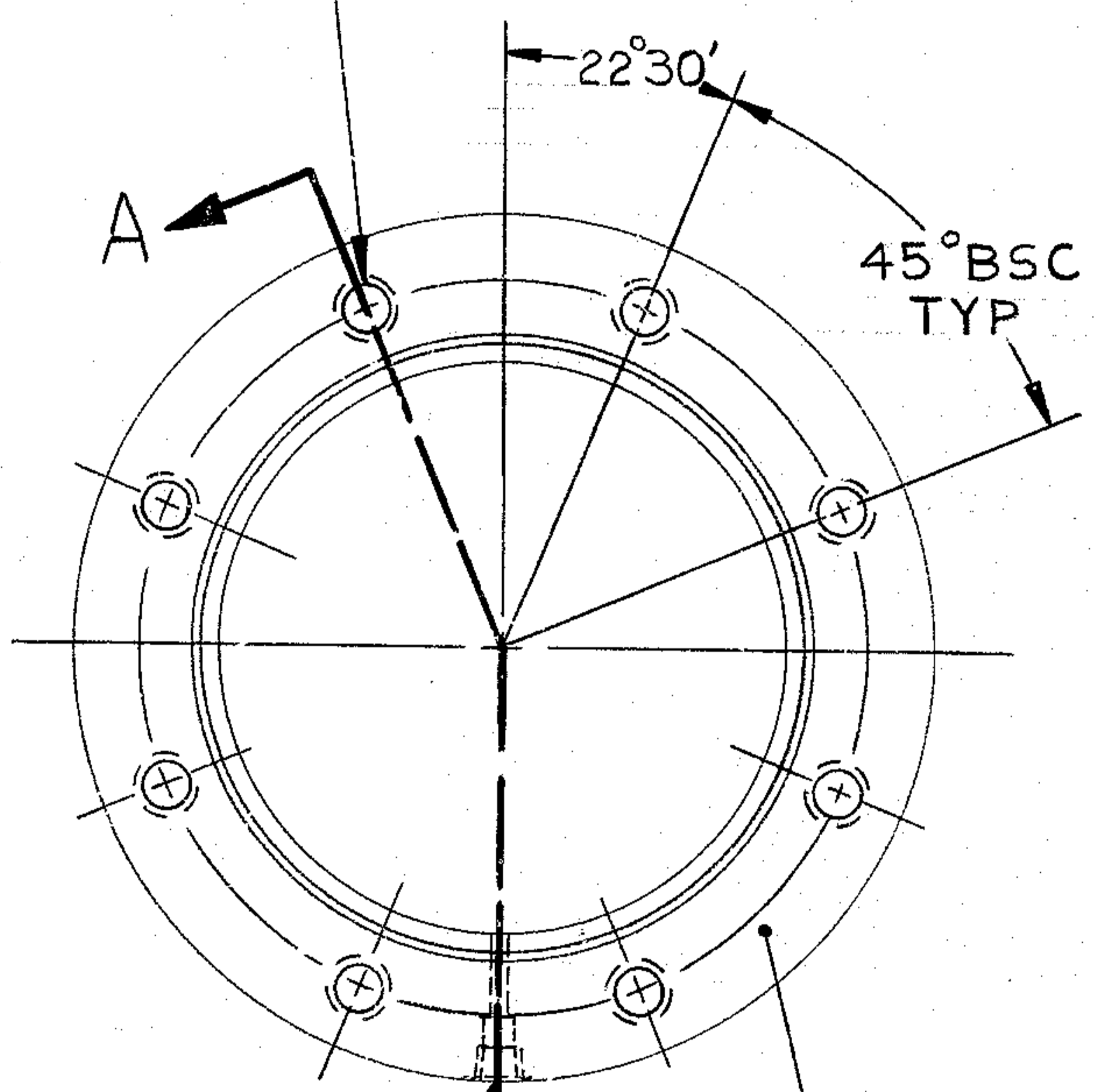


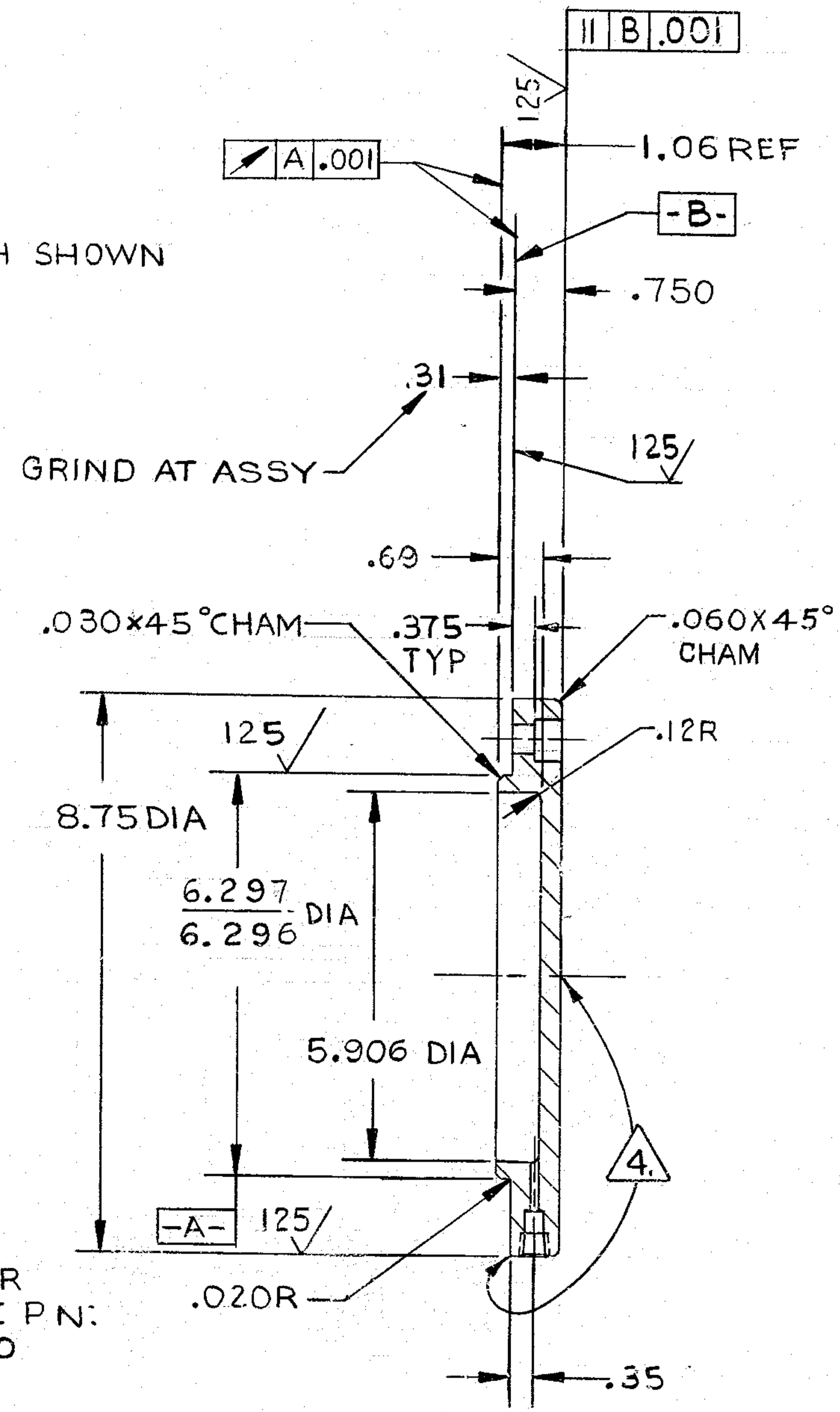
THIS DOCUMENT CONTAINS INFORMATION PROPRIETARY TO WESTERN GEAR CORPORATION. ALL DESIGN, MANUFACTURING, REPRODUCTION, USE, PATENT AND SALES RIGHTS REGARDING THE SAME ARE HEREBY EXPRESSLY RESERVED BY WESTERN GEAR CORPORATION. THIS DOCUMENT IS SUBMITTED FOR REFERENCE PURPOSES ONLY AND SHALL NOT BE DISCLOSED TO ANY UNAUTHORIZED PERSON OR INCORPORATED INTO ANY OTHER PROJECT.

.435
.445 DIA-THRU
.625
.650 CBORE FAR SIDE TO DEPTH SHOWN
WITH .030 CORNER RADIUS
8 HOLES ON 7.625 DIA BSC
⊕ A .030 DIA



CHEM ETCH OR VIBRO SCRIBE P.N.: 2150.300C010

.156 DIA -THRU
.338
.345 CBORE-.75 DEEP
.41 DIA x 90° CSK
1/8-27 NPT TAP
ONE HOLE



REVISIONS				
ZONE	LTR	DESCRIPTION	DATE	APPROVED

- NOTES: UNLESS OTHERWISE SPECIFIED:
- ALL DIMENSIONS ARE IN INCHES.
 - INTERPRET DIMENSIONING & TOLERANCING PER USA STANDARD USAS1-Y14.5-1966,
 - SURFACE ROUGHNESS 250 ALL OVER PER USA STANDARD USAS-B46.1-1962.
 - SURFACE TREATMENT: APPLY PRIMER TO ENCLOSED AREA, EXCEPT HOLES, PER W.G.C. SPEC 511.

SECTION A-A
NEXT ASSY: 2150.300E002 (82402-44175R2)

FIND NO.	PART NO.	DESCRIPTION	QTY	MATERIAL	CODE IDENT
LIST OF MATERIAL (LM)					
LIMITS ON MACHINED DIMENSIONS EXCEPT AS NOTED ANGULAR = ± 1° 0'		150 IN. STELLAR TELESCOPE MTG		WESTERN HEAVY MACHINERY DIVISION GEAR CORPORATION EVERETT, WASHINGTON	
LINEAR: X = ± .1 XXX = ± .010 XX = ± .03 FRACTIONAL = ± 1/32		DRAWN <i>L. Ozgic</i> 7-14-69 CHECK <i>B. Sivilli</i> 10-30-69		COVER, RETAINER, BEARING-DRIVE GEARBOX	
BREAK ALL SHARP EDGES		ENGR			
MATERIAL STEEL AISI 1020-1025		82402-44175D10			
APPROVED <i>[Signature]</i>		SIZE CODE IDENT NO. C 16603		2150.300C010	
		SCALE 1/2		WT LB SHEET OF	

2150.300C010

REF. FILE 1181

REV

44175D10